

Whitney Museum of American Art

America Is Hard to See

May 1–September 27, 2015

JOHN R. ECKEL, JR. FOUNDATION GALLERY

Eight West Eighth (Floor 1)



99.4

Photographs

Berenice Abbott

Untitled (Foyer of the Whitney Museum of American Art on 8th Street, NYC), (1938)

Gelatin silver print

Sheet: 9 7/8 × 8in. (25.1 × 20.3 cm)

Image: 9 5/8 × 7 5/8in. (24.5 × 19.4 cm)

Purchase, with funds from Joanne Leonhardt Cassullo and the Dorothea L. Leonhardt Fund at the Communities Foundation of Texas

Eight West Eighth (Floor 1)



31.596

Prints

Peggy Bacon

The Whitney Studio Club, (1925)

Drypoint

Sheet (Irregular): 9 1/16 × 11 1/8in. (23 × 28.3 cm)

Plate: 5 13/16 × 9in. (14.8 × 22.9 cm)

Gift of Gertrude Vanderbilt Whitney

Eight West Eighth (Floor 1)



93.25

Photographs

Cecil Beaton

Portrait of Juliana Force, (c. 1931)

Gelatin silver print

Image: 7 1/4 × 9 1/4in. (18.4 × 23.5 cm)

Gift of Gertrude Vanderbilt Whitney

Eight West Eighth (Floor 1)



36.5a-b

Sculpture

Emma Lu Davis

Cock, (1932)

Painted wood with copper on wood base

Overall: 13 7/8 × 9 5/16 × 12 3/4in. (35.2 × 23.7 × 32.4 cm)

Purchase

Eight West Eighth (Floor 1)



31.171

Paintings

Stuart Davis

Early American Landscape, 1925

Oil on canvas

Overall: 19 3/16 × 22 3/16in. (48.7 × 56.4 cm)

Gift of Juliana Force

Whitney Museum of American Art
America Is Hard to See
May 1–September 27, 2015

Eight West Eighth (Floor 1)



2014.74.17
Drawings
Guy Pène Du Bois
The Three Hour Portrait, (1921)
Watercolor, pen and ink, and graphite pencil on paper
Sheet: 27 × 20in. (68.6 × 50.8 cm)
Image: 23 × 17 1/2in. (58.4 × 44.5 cm)
Gift of Flora Miller Biddle

Eight West Eighth (Floor 1)



2014.74.16
Drawings
Guy Pène Du Bois
The Author, (1921)
Watercolor, pen and ink, and graphite pencil on paper
Sheet: 26 7/8 × 19 7/8in. (68.3 × 50.5 cm)
Image: 20 7/8 × 15 15/16in. (53 × 40.5 cm)
Gift of Flora Miller Biddle

Eight West Eighth (Floor 1)



2014.74.14
Drawings
Guy Pène Du Bois
The Entertainer, (1921)
Watercolor with scratching, pen and ink, and graphite pencil on paper
Sheet: 22 9/16 × 15 1/2in. (57.3 × 39.4 cm)
Image: 17 1/16 × 12 1/2in. (43.3 × 31.8 cm)
Gift of Flora Miller Biddle

Eight West Eighth (Floor 1)



2014.74.7
Drawings
Guy Pène Du Bois
Indigenous Workers, (1921)
Watercolor, pen and ink, and graphite pencil on paper
Sheet: 22 1/2 × 15 5/16in. (57.2 × 38.9 cm)
Image: 19 3/8 × 13 3/4in. (49.2 × 34.9 cm)
Gift of Flora Miller Biddle

Eight West Eighth (Floor 1)



2014.74.6
Drawings
Guy Pène Du Bois
The Creation of a Veteran, (1921)
Watercolor, pen and ink, and graphite pencil on paper
Sheet: 22 1/2 × 15 3/8in. (57.2 × 39.1 cm)
Image: 16 3/4 × 13 1/2in. (42.5 × 34.3 cm)
Gift of Flora Miller Biddle

Whitney Museum of American Art

America Is Hard to See

May 1–September 27, 2015

Eight West Eighth (Floor 1)



2014.74.5

Drawings

Guy Pène Du Bois

The Social Lion, (1921)

Watercolor, pen and ink, and graphite pencil on paper

Sheet: 22 1/2 × 15 1/2in. (57.2 × 39.4 cm)

Image: 17 1/2 × 13 1/2in. (44.5 × 34.3 cm)

Gift of Flora Miller Biddle

Eight West Eighth (Floor 1)



2014.74.1

Drawings

Guy Pène Du Bois

(Title page), (1921)

Watercolor, pen and ink and graphite pencil on paper

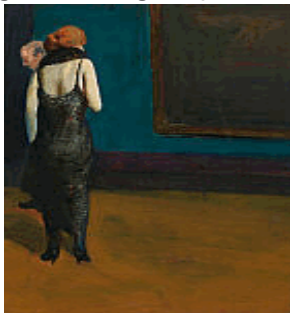
Sheet (sight): 11 3/4 × 14in. (29.8 × 35.6 cm)

Image (sight): 11 3/4 × 14in. (29.8 × 35.6 cm)

Overall (mat board): 19 × 24in. (48.3 × 61 cm)

Gift of Flora Miller Biddle

Eight West Eighth (Floor 1)



51.43

Paintings

Guy Pène Du Bois

Juliana Force at the Whitney Studio Club, (1921)

Oil on wood

Overall: 20 × 14 15/16in. (50.8 × 37.9 cm)

Gift of Mr. and Mrs. James S. Adams in memory of Philip K. Hutchins

Eight West Eighth (Floor 1)



33.90

Prints

Mabel Dwight

Life Class, 1931

Lithograph

Sheet (Irregular): 13 11/16 × 18 1/16in. (34.8 × 45.9 cm)

Image: 9 13/16 × 13 9/16in. (24.9 × 34.4 cm)

Purchase

Eight West Eighth (Floor 1)



33.43a-f

Sculpture

Wharton Esherick

Goslings, 1927

Boxwood on mahogany base

Overall: 13 7/8 × 20 1/4 × 3 3/4in. (35.2 × 51.4 × 9.5 cm)

Purchase

Whitney Museum of American Art

America Is Hard to See

May 1–September 27, 2015

Eight West Eighth (Floor 1)



31.17

Sculpture

Duncan Ferguson

Squirrel, (c. 1930)

Mahogany

Overall: 16 3/4 × 8 3/4 × 7 7/8in. (42.5 × 22.2 × 20 cm)

Gift of Gertrude Vanderbilt Whitney

Eight West Eighth (Floor 1)



31.21

Sculpture

Paul Fiene

Snail, 1929

Limestone

Overall: 8 1/4 × 19 1/4 × 10 3/4in. (21 × 48.9 × 27.3 cm)

Purchase

Eight West Eighth (Floor 1)



31.18

Sculpture

Paul Fiene

Fish, (1929)

Marble

Overall: 9 3/8 × 27 3/8 × 8 3/8in. (23.8 × 69.5 × 21.3 cm)

Purchase

Eight West Eighth (Floor 1)



31.24

Sculpture

John B. Flannagan

Elephant, 1929-1930

Sandstone

Overall: 13 3/8 × 14 1/2 × 7 1/2in. (34 × 36.8 × 19.1 cm)

Gift of Gertrude Vanderbilt Whitney

Eight West Eighth (Floor 1)



31.22

Sculpture

John B. Flannagan

Chimpanzee, (1928)

Granite

Overall: 10 5/8 × 6 7/8 × 8in. (27 × 17.5 × 20.3 cm)

Gift of Gertrude Vanderbilt Whitney

Whitney Museum of American Art

America Is Hard to See

May 1–September 27, 2015

Eight West Eighth (Floor 1)



53.46

Paintings

William Glackens

Hammerstein's Roof Garden, c. 1901

Oil on linen

Overall: 29 7/8 × 24 13/16in. (75.9 × 63 cm)

Purchase

Eight West Eighth (Floor 1)



86.70.3

Paintings

Robert Henri

Gertrude Vanderbilt Whitney, (1916)

Oil on canvas

Overall: 49 15/16 × 72in. (126.8 × 182.9 cm)

Gift of Flora Whitney Miller

Eight West Eighth (Floor 1)



31.240

Paintings

Robert Henri

Laughing Child, (1907)

Oil on canvas

Overall: 23 3/4 × 20 1/4in. (60.3 × 51.4 cm)

Gift of Gertrude Vanderbilt Whitney

Eight West Eighth (Floor 1)



70.483

Drawings

Edward Hopper

(Standing Female Nude with Hand Behind Head, Profile View), (1920-1925)

Fabricated chalk on paper

Sheet: 17 7/8 × 12in. (45.4 × 30.5 cm)

Josephine N. Hopper Bequest

Eight West Eighth (Floor 1)



70.480

Drawings

Edward Hopper

(Standing Female Nude with Drape), (1920-1925)

Fabricated chalk on paper

Sheet (Irregular): 20 × 13 1/2in. (50.8 × 34.3 cm)

Josephine N. Hopper Bequest

Whitney Museum of American Art

America Is Hard to See

May 1–September 27, 2015

Eight West Eighth (Floor 1)



70.477

Drawings
Edward Hopper
(Standing Female Nude, Rear View), (1920-1925)
Fabricated chalk on paper
Sheet: 20 1/16 × 13 9/16in. (51 × 34.4 cm)
Josephine N. Hopper Bequest

Eight West Eighth (Floor 1)



70.423

Drawings
Edward Hopper
(Seated Female Nude with One Shoe, Profile View), (1920-1925)
Fabricated chalk on paper
Sheet: 18 × 11 1/2in. (45.7 × 29.2 cm)
Josephine N. Hopper Bequest

Eight West Eighth (Floor 1)



70.414

Drawings
Edward Hopper
(Standing Female Nude, Rear View), (1920-1925)
Fabricated chalk on paper
Sheet: 16 1/2 × 10 5/8in. (41.9 × 27 cm)
Josephine N. Hopper Bequest

Eight West Eighth (Floor 1)



70.401

Drawings
Edward Hopper
(Reclining Female Nude, Rear View), (1920-1925)
Fabricated chalk on paper
Sheet (Irregular): 19 1/16 × 12 1/16in. (48.4 × 30.6 cm)
Josephine N. Hopper Bequest

Eight West Eighth (Floor 1)



70.346

Drawings
Edward Hopper
(Standing Female Nude with Drape, Three-Quarter View), (1920-1925)
Charcoal on paper
Sheet: 17 15/16 × 11 7/16in. (45.6 × 29.1 cm)
Josephine N. Hopper Bequest

Whitney Museum of American Art

America Is Hard to See

May 1–September 27, 2015

Eight West Eighth (Floor 1)



70.333

Drawings
Edward Hopper
(Seated Female Nude, Rear View), (1920-1925)
Fabricated chalk on paper
Sheet: 17 15/16 × 11 1/2in. (45.6 × 29.2 cm)
Josephine N. Hopper Bequest

Eight West Eighth (Floor 1)



70.332

Drawings
Edward Hopper
(Reclining Female Nude, Rear View), 1923
Fabricated chalk on paper
Sheet (Irregular): 12 × 19in. (30.5 × 48.3 cm)
Josephine N. Hopper Bequest

Eight West Eighth (Floor 1)



70.322

Drawings
Edward Hopper
(Standing Female Nude Leaning Against Wall, Profile View), (1920-1925)
Fabricated chalk on paper
Sheet (Irregular): 18 15/16 × 12in. (48.1 × 30.5 cm)
Josephine N. Hopper Bequest

Eight West Eighth (Floor 1)



70.314

Drawings
Edward Hopper
(Standing Female Nude with Arms Raised), (1920-1925)
Fabricated chalk on paper
Sheet: 16 1/2 × 10 5/8in. (41.9 × 27 cm)
Josephine N. Hopper Bequest

Eight West Eighth (Floor 1)



70.1187

Paintings
Edward Hopper
(Le Bistro or The Wine Shop), (1909)
Oil on canvas
Overall: 24 × 28 7/8in. (61 × 73.3 cm)
Josephine N. Hopper Bequest

Whitney Museum of American Art

America Is Hard to See

May 1–September 27, 2015

Eight West Eighth (Floor 1)

70.556

Drawings

Edward Hopper

(Reclining Male Nude Covering Face with Arms), (1920-1925)

Fabricated chalk on paper

Sheet: 12 × 18in. (30.5 × 45.7 cm)

Josephine N. Hopper Bequest



Eight West Eighth (Floor 1)

70.763

Drawings

Edward Hopper

(Crouching Male Nude, Profile View), (1920-1925)

Fabricated chalk on paper

Sheet (Irregular): 18 × 12in. (45.7 × 30.5 cm)

Josephine N. Hopper Bequest



Eight West Eighth (Floor 1)

55.1

Paintings

Yasuo Kuniyoshi

Child, (1923)

Oil on linen

Overall: 30 1/8 × 24 3/16in. (76.5 × 61.4 cm)

Gift of Mrs. Edith Gregor Halpert



Eight West Eighth (Floor 1)

54.58

Paintings

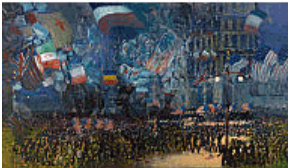
George Luks

Armistice Night, 1918

Oil on canvas

Overall: 37 × 68 3/8in. (94 × 173.7 cm)

Gift of an anonymous donor



Eight West Eighth (Floor 1)

31.57

Sculpture

Reuben Nakian

Seal, 1930

Bronze

Overall: 17 1/8 × 14 × 7 1/2in. (43.5 × 35.6 × 19.1 cm)

Gift of Gertrude Vanderbilt Whitney



Whitney Museum of American Art

America Is Hard to See

May 1–September 27, 2015

Eight West Eighth (Floor 1)

93.24.2

Photographs
Charles Sheeler
Office Interior, Whitney Studio Club, 10 West 8 Street, (c. 1928)
Gelatin silver print
Image: 7 1/2 × 9 1/4in. (19.1 × 23.5 cm)
Gift of Gertrude Vanderbilt Whitney



Eight West Eighth (Floor 1)

93.24.1

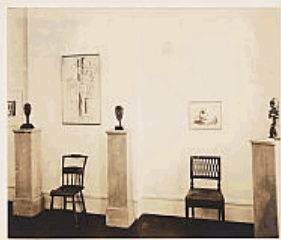
Photographs
Charles Sheeler
Office Interior, Whitney Studio Club, 10 West 8 Street, (c. 1928)
Gelatin silver print
Image: 7 1/2 × 9 3/8in. (19.1 × 23.8 cm)
Gift of Gertrude Vanderbilt Whitney



Eight West Eighth (Floor 1)

93.23.1

Photographs
Charles Sheeler
Installation view of Whitney Studio Club Exhibition "Recent Paintings by Pablo Picasso and Negro Sculpture", (1923)
Gelatin silver print
Image: 7 7/16 × 9 3/8in. (18.9 × 23.8 cm)
Gift of Gertrude Vanderbilt Whitney



Eight West Eighth (Floor 1)

31.346

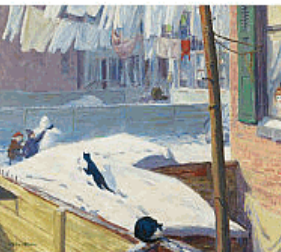
Paintings
Everett Shinn
Revue, 1908
Oil on canvas
Overall: 18 1/8 × 24 1/4 × 7/8in. (46 × 61.6 × 2.2 cm)
Gift of Gertrude Vanderbilt Whitney



Eight West Eighth (Floor 1)

36.153

Paintings
John Sloan
Backyards, Greenwich Village, 1914
Oil on canvas
Overall: 26 × 31 15/16in. (66 × 81.1 cm)
Purchase



Whitney Museum of American Art

America Is Hard to See

May 1–September 27, 2015

Eight West Eighth (Floor 1)



89.7

Photographs
Edward Steichen

Portrait of Gertrude Vanderbilt Whitney, 1931

Gelatin silver print mounted on board

Sheet: 16 5/8 × 13 7/16in. (42.2 × 34.1 cm)

Image: 16 5/8 × 13 7/16in. (42.2 × 34.1 cm)

Mount: 16 11/16 × 13 7/16 × 1/8in. (42.4 × 34.1 × 0.3 cm)

Gift of the family of Edith and Lloyd Goodrich

Eight West Eighth (Floor 1)



31.76

Sculpture

Carl Walters

Bull, 1927

Ceramic

Overall: 8 5/8 × 15 3/4 × 4 7/8in. (21.9 × 40 × 12.4 cm)

Gift of Gertrude Vanderbilt Whitney

Eight West Eighth (Floor 1)



31.81

Sculpture

Gertrude Vanderbilt Whitney

Head for Titanic Memorial, 1922

Seravezza marble head

Overall: 12 3/4 × 8 1/8 × 9 5/8in. (32.4 × 20.6 × 24.4 cm)

Overall (with base): 19 × 8 1/8 × 9 5/8in. (48.3 × 20.6 × 24.4 cm)

Gift of the artist

Eight West Eighth (Floor 1)



93.26.2

Photographs

William Winter

Chandelier, Whitney Museum, 10 West 8 Street, 1932

Gelatin silver print

Sheet: 10 11/16 × 13 11/16in. (27.1 × 34.8 cm)

Image (Irregular): 10 9/16 × 13 1/2in. (26.8 × 34.3 cm)

Gift of Gertrude Vanderbilt Whitney

Eight West Eighth (Floor 1)



93.26.1

Photographs

William Winter

Entrance lobby, Whitney Museum, 10 West 8 Street, 1932

Gelatin silver print

Sheet: 13 5/8 × 10 11/16in. (34.6 × 27.1 cm)

Image (Irregular): 13 1/2 × 10 9/16in. (34.3 × 26.8 cm)

Gift of Gertrude Vanderbilt Whitney

Whitney Museum of American Art

America Is Hard to See

May 1–September 27, 2015

Eight West Eighth (Floor 1)



31.86

Sculpture
William Zorach
Bunny, (1930)

Stone

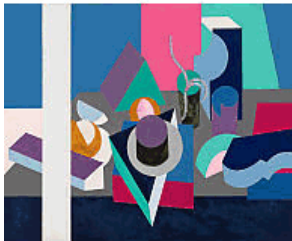
Overall: 4 5/8 × 8 7/8 × 5 3/16in. (11.7 × 22.5 × 13.2 cm)

Overall (Legacy dims in TMS - OLD): 5 × 8 3/8 × 4 3/4in., 222.7lb. (12.7 × 21.3 × 12.1 cm, 101kg)

Gift of Gertrude Vanderbilt Whitney

HURST FAMILY GALLERIES

Forms Abstracted (Floor 8)



54.20

Paintings
Patrick Henry Bruce
Painting, c. 1921-1922

Oil on canvas

Overall: 35 × 45 3/4in. (88.9 × 116.2 cm)

Gift of an anonymous donor

Forms Abstracted (Floor 8)



64.18

Paintings
John Covert
Resurrection, 1916

Oil, gesso, and piled fabric on plywood

Overall: 23 7/8 × 25 15/16in. (60.6 × 65.9 cm)

Image: 23 3/4 × 25 3/4in. (60.3 × 65.4 cm)

Gift of Charles Simon

Forms Abstracted (Floor 8)



77.40

Drawings
James Daugherty
Three Base Hit, (1914)

Pen and ink and opaque watercolor on paper

Sheet: 15 1/2 × 19in. (39.4 × 48.3 cm)

Purchase

Forms Abstracted (Floor 8)



31.169

Paintings
Stuart Davis
Egg Beater No. 1, (1927)

Oil on linen

Overall: 29 3/16 × 36 3/16in. (74.1 × 91.9 cm)

Gift of Gertrude Vanderbilt Whitney

Whitney Museum of American Art

America Is Hard to See

May 1–September 27, 2015

Forms Abstracted (Floor 8)



76.9

Drawings

Arthur Dove

The Critic, (1925)

Assemblage of paper, newspaper, fabric, cord, broken glass, watercolor and graphite pencil on board

Overall (Irregular): 19 1/2 × 13 × 2 1/4in. (49.5 × 33 × 5.7 cm)

Purchase, with funds from the Historic Art Association of the Whitney Museum of American Art, Mr. and Mrs. Morton L. Janklow, the Howard and Jean Lipman

Forms Abstracted (Floor 8)



56.21

Paintings

Arthur Dove

Ferry Boat Wreck, (1931)

Oil on canvas

Overall: 18 1/8 × 30 1/8in. (46 × 76.5 cm)

Purchase, with funds from Mr. and Mrs. Roy R. Neuberger

Forms Abstracted (Floor 8)



53.38a-b

Paintings

Lyonel Feininger

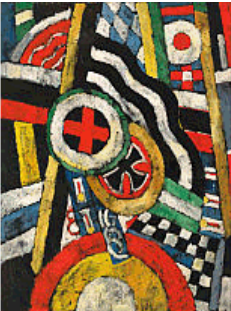
Gelmeroda, VIII, 1921

Oil on linen

Overall: 39 1/2 × 31 5/8in. (100.3 × 80.3 cm)

Purchase

Forms Abstracted (Floor 8)



58.65

Paintings

Marsden Hartley

Painting, Number 5, (1914-1915)

Oil on linen

Overall: 39 1/4 × 32in. (99.7 × 81.3 cm)

Gift of an anonymous donor

Forms Abstracted (Floor 8)



52.37a-b

Paintings

Marsden Hartley

Forms Abstracted, (1913)

Oil on canvas, with wood frame

Overall: 39 5/8 × 31 13/16in. (100.6 × 80.8 cm)

Gift of Mr. and Mrs. Hudson D. Walker and exchange

Whitney Museum of American Art

America Is Hard to See

May 1–September 27, 2015

Forms Abstracted (Floor 8)



42.1a-b

Sculpture
Robert Laurent
The Flame, (c. 1917)
Wood

Overall: 18 × 3 1/2 × 3 1/2in. (45.7 × 8.9 × 8.9 cm)
Overall (with base): 2 13/16 × 7 1/2 × 7 1/2in. (52.9 × 26.7 × 26.7 cm)
Gift of Bartlett Arkell

Forms Abstracted (Floor 8)



95.188

Paintings
Gerald Murphy
Cocktail, 1927

Oil and pencil on linen
Overall: 29 1/16 × 29 15/16in. (73.8 × 76 cm)
Purchase, with funds from Evelyn and Leonard A. Lauder, Thomas H. Lee and the Modern Painting and Sculpture Committee

Forms Abstracted (Floor 8)



94.33

Drawings
Isamu Noguchi
Paris Abstraction, (1927-1928)
Opaque watercolor and graphite pencil on paper
Sheet: 25 1/2 × 19 3/4in. (64.8 × 50.2 cm)
Gift of The Isamu Noguchi Foundation, Inc.

Forms Abstracted (Floor 8)



94.32

Drawings
Isamu Noguchi
Paris Abstraction, (1927-1928)
Opaque watercolor, pen and ink, and graphite pencil on paper
Sheet: 25 11/16 × 19 3/4in. (65.2 × 50.2 cm)
Gift of The Isamu Noguchi Foundation, Inc.

Forms Abstracted (Floor 8)



58.43

Paintings
Georgia O'Keeffe
Abstraction, (1926)
Oil on canvas
Overall: 30 3/16 × 18 1/4in. (76.7 × 46.4 cm)
Purchase, with funds from Georgia O'Keeffe and by exchange

Whitney Museum of American Art

America Is Hard to See

May 1–September 27, 2015

Forms Abstracted (Floor 8)



32.83

Sculpture

Nancy Elizabeth Prophet

Congolais, (1931)

Cherry

Overall: 16 13/16 × 7 7/8 × 9 1/4in. (42.7 × 20 × 23.5 cm)

Purchase

Forms Abstracted (Floor 8)



72.147

Paintings

Joseph Stella

Luna Park, (c. 1913)

Oil on composition board

Overall: 17 1/2 × 23 1/2in. (44.5 × 59.7 cm)

Gift of Mrs. Charles A. Goldberg

Forms Abstracted (Floor 8)



61.42

Drawings

Joseph Stella

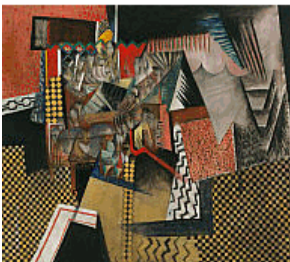
Collage, Number 21, (c. 1920)

Mixed media and collage on paper

Sheet (Irregular): 10 15/16 × 8 1/8in. (27.8 × 20.6 cm)

Purchase

Forms Abstracted (Floor 8)



31.382

Paintings

Max Weber

Chinese Restaurant, 1915

Oil, charcoal, and collaged paper on linen

Overall: 40 × 48 1/8in. (101.6 × 122.2 cm)

Purchase

Music, Pink and Blue (Floor 8)



33.53

Sculpture

Richmond Barthé

African Dancer, 1933

Plaster

Overall: 42 3/4 × 16 7/8 × 14 1/4in. (108.6 × 42.9 × 36.2 cm)

Purchase

Whitney Museum of American Art

America Is Hard to See

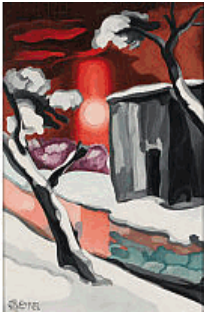
May 1–September 27, 2015

Music, Pink and Blue (Floor 8)

96.60.9

Drawings
Oscar Bluemner
#8. June - Moon, 1927
Transparent and opaque watercolor on paper mounted on fiberboard
Sheet: 13 5/16 × 10in. (33.8 × 25.4 cm)
Mount (board): 15 3/8 × 10 15/16in. (39.1 × 27.8 cm)
Charles Simon Bequest

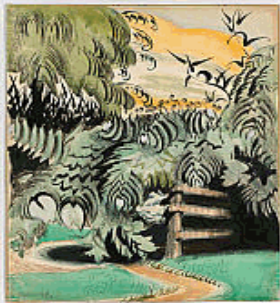
Music, Pink and Blue (Floor 8)



31.115

Paintings
Oscar Bluemner
Last Evening of the Year, (c. 1929)
Oil on composition board
Overall: 14 × 10in. (35.6 × 25.4 cm)
Gift of Juliana Force

Music, Pink and Blue (Floor 8)



2009.203

Drawings
Charles Burchfield
Cricket Chorus in the Arbor, 1917
Transparent and opaque watercolor, brush and ink, and wax crayon on paper mounted on board
Sheet (irregular): 22 1/16 × 17 15/16in. (56 × 45.6 cm)
Overall: 22 1/8 × 18 3/16 × 1/8in. (56.2 × 46.2 × 0.3 cm)
Gift of Anne and John Straus

Music, Pink and Blue (Floor 8)



2002.331

Drawings
Charles Burchfield
Sunlight in Forest, 1916
Watercolor and graphite pencil on paper
Sheet (Irregular): 20 × 13 15/16in. (50.8 × 35.4 cm)
Purchase, with funds from the Drawing Committee

Music, Pink and Blue (Floor 8)



31.408

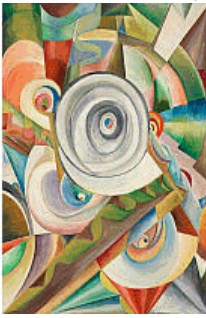
Drawings
Charles Burchfield
Noontide in Late May, 1917
Opaque and transparent watercolor, and graphite pencil on paper
Sheet: 22 × 18in. (55.9 × 45.7 cm)
Purchase

Whitney Museum of American Art

America Is Hard to See

May 1–September 27, 2015

Music, Pink and Blue (Floor 8)



93.98

Paintings
E.E. Cummings
Noise Number 13, (1925)
Oil on canvas
Overall: 59 5/8 × 42 3/4in. (151.4 × 108.6 cm)
Purchase, with funds from the Painting and Sculpture Committee

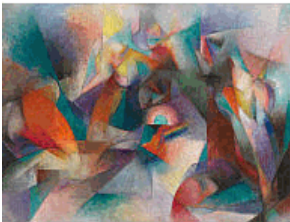
Music, Pink and Blue (Floor 8)



P.2014.55

Photographs
Imogen Cunningham
Martha Graham 2, 1931
Gelatin silver print
Sheet: 7 5/8 × 5 7/8in. (19.4 × 14.9 cm)
Image: 7 5/8 × 5 7/8in. (19.4 × 14.9 cm)
Mount: 14 1/2 × 11 9/16 × 1/16in. (36.8 × 29.4 × 0.2 cm)
Promised gift of Sondra Gilman Gonzalez-Falla and Celso Gonzalez-Falla to Whitney

Music, Pink and Blue (Floor 8)



52.8

Paintings
Stanton Macdonald-Wright
Oriental - Synchrony in Blue-Green, 1918
Oil on linen
Overall: 36 1/8 × 50in. (91.8 × 127 cm)
Purchase

Music, Pink and Blue (Floor 8)



91.90

Paintings
Georgia O'Keeffe
Music, Pink and Blue No. 2, 1918
Oil on canvas
Overall: 35 × 29 15/16in. (88.9 × 76 cm)
Gift of Emily Fisher Landau in honor of Tom Armstrong

Music, Pink and Blue (Floor 8)



96.175

Paintings
Agnes Pelton
Untitled, 1931
Oil on canvas
Overall: 36 3/16 × 24 3/16in. (91.9 × 61.4 cm)
Purchase, with funds from the Modern Painting and Sculpture Committee

Whitney Museum of American Art
America Is Hard to See
May 1–September 27, 2015

Music, Pink and Blue (Floor 8)



51.33
Paintings
Morgan Russell
Four Part Synchromy, Number 7, (1914-1915)
Oil on cardboard and canvas mounted on cardboard, four parts
Overall: 16 × 12in. (40.6 × 30.5 cm)
Image: 15 1/4 × 11 3/4in. (38.7 × 29.8 cm)
Gift of the artist in memory of Gertrude Vanderbilt Whitney

Music, Pink and Blue (Floor 8)



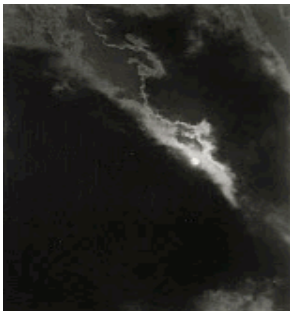
73.36a-b
Paintings
Florine Stettheimer
Sun, 1931
Oil on canvas, with frame
Overall (Canvas): 38 × 26 1/8in. (96.5 × 66.4 cm)
Overall: 43 5/8 × 31 3/4 × 2 1/8in. (110.8 × 80.6 × 5.4 cm)
Purchase

Music, Pink and Blue (Floor 8)



E.2015.0141
Paintings
Florine Stettheimer
New York - Liberty,
Oil on canvas
60 x 42 in.
Private collection

Music, Pink and Blue (Floor 8)



P.2014.105
Photographs
Alfred Stieglitz
Songs of the Sky B3, (1923)
Gelatin silver print
Sheet (sight): 4 1/2 × 3 1/2in. (11.4 × 8.9 cm)
Image (sight): 4 1/2 × 3 1/2in. (11.4 × 8.9 cm)
Promised gift of Sondra Gilman Gonzalez-Falla and Celso Gonzalez-Falla to Whitney Museum of American Art, New York and The Gilman and Gonzalez-Falla Arts

Whitney Museum of American Art

America Is Hard to See

May 1–September 27, 2015

Machine Ornament (Floor 8)



79.64

Prints
Henry Billings
Machines and Men, 1931
Lithograph
Sheet (Irregular): 19 1/4 × 17 1/8in. (48.9 × 43.5 cm)
Image: 15 3/4 × 13 3/4in. (40 × 34.9 cm)
Purchase, with funds from the Print Purchase Fund

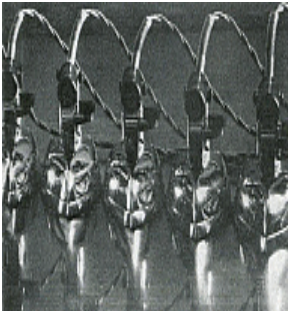
Machine Ornament (Floor 8)



2001.381

Photographs
Ilse Bing
Dead End II (Smokestacks, Queensborough Bridge), 1936
Gelatin silver print
Image: 7 1/2 × 11 1/8in. (19.1 × 28.3 cm)
Mount (board): 13 7/8 × 16 1/2in. (35.2 × 41.9 cm)
Bequest of Ilse Bing Wolff

Machine Ornament (Floor 8)



P.2014.50

Photographs
Margaret Bourke-White
Edison Electric, 1930
Gelatin silver print
Overall: 9 1/4 × 13 1/8in. (23.5 × 33.3 cm)
Promised gift of Sondra Gilman Gonzalez-Falla and Celso Gonzalez-Falla to Whitney Museum of American Art, New York and The Gilman and Gonzalez-Falla Arts Foundation

Machine Ornament (Floor 8)



P.2014.49

Photographs
Margaret Bourke-White
George Washington Bridge, c. 1930
Gelatin silver print
Overall: 21 3/4 × 14in. (55.2 × 35.6 cm)
Promised gift of Sondra Gilman Gonzalez-Falla and Celso Gonzalez-Falla to Whitney Museum of American Art, New York and The Gilman and Gonzalez-Falla Arts Foundation

Machine Ornament (Floor 8)

P.79.90

Sculpture
Alexander Calder
Little Ball with Counterweight, (c. 1931)
Painted sheet metal, wire, and wood
Overall: 63 3/4 × 18 1/4 × 18in. (161.9 × 46.4 × 45.7 cm)
Promised 50th Anniversary gift of Mr. and Mrs. Leonard J. and Ruth P. Horwich

Whitney Museum of American Art

America Is Hard to See

May 1–September 27, 2015

Machine Ornament (Floor 8)



84.41

Sculpture
Alexander Calder
Hanging Spider, (c. 1940)
Painted sheet metal and wire
Overall: 49 1/2 × 35 1/2in. (125.7 × 90.2 cm)
Mrs. John B. Putnam Bequest

Machine Ornament (Floor 8)



37.10

Paintings
Ralston Crawford
Steel Foundry, Coatesville, Pa., 1936-1937
Oil on canvas
Overall: 32 1/8 × 40in. (81.6 × 101.6 cm)
Purchase

Machine Ornament (Floor 8)



41.3

Paintings
Stuart Davis
House and Street, 1931
Oil on canvas
Overall: 26 1/8 × 42 1/8in. (66.4 × 107 cm)
Purchase

Machine Ornament (Floor 8)



31.172

Paintings
Charles Demuth
My Egypt, 1927
Oil, fabricated chalk, and graphite pencil on composition board
Overall: 35 15/16 × 30in. (91.3 × 76.2 cm)
Purchase, with funds from Gertrude Vanderbilt Whitney

Machine Ornament (Floor 8)



31.177

Paintings
Elsie Driggs
Pittsburgh, (1927)
Oil on canvas
Overall: 34 1/4 × 40 1/4in. (87 × 102.2 cm)
Gift of Gertrude Vanderbilt Whitney

Whitney Museum of American Art

America Is Hard to See

May 1–September 27, 2015

Machine Ornament (Floor 8)



96.68.138

Prints

Gerald K. Geerlings

Jeweled City, 1931

Etching and aquatint

Sheet: 20 9/16 × 15 5/8in. (52.2 × 39.7 cm)

Plate: 15 9/16 × 11 11/16in. (39.5 × 29.7 cm)

Purchase, with funds from The Lauder Foundation, Leonard and Evelyn Lauder Fund

Machine Ornament (Floor 8)



P.2014.82

Photographs

Lewis Hine

Untitled (No Fear of Heights), c. 1930-1931

Gelatin silver print

Image: 4 × 7in. (10.2 × 17.8 cm)

Mount: 11 × 13 3/4in. (27.9 × 34.9 cm)

Promised gift of Sondra Gilman Gonzalez-Falla and Celso Gonzalez-Falla to Whitney Museum of American Art, New York and The Gilman and Gonzalez-Falla Arts

Machine Ornament (Floor 8)



78.17

Drawings

Earl Horter

The Chrysler Building Under Construction, (1931)

Pen, brush and ink, transparent and opaque watercolor, and graphite pencil on paper

Sheet: 21 9/16 × 16 1/16in. (54.8 × 40.8 cm)

Image: 20 1/2 × 14 11/16in. (52.1 × 37.3 cm)

Purchase, with funds from Mrs. William A. Marsteller

Machine Ornament (Floor 8)



96.68.161

Prints

Victoria Hutson Huntley

Lower New York, 1934

Lithograph

Sheet (Irregular): 13 1/16 × 18 1/8in. (33.2 × 46 cm)

Image: 10 1/8 × 13 11/16in. (25.7 × 34.8 cm)

Purchase, with funds from The Lauder Foundation, Leonard and Evelyn Lauder Fund

Machine Ornament (Floor 8)



82.24

Drawings

Louis Lozowick

Machine Ornament, (c. 1925-1927)

Pen and brush and ink on paper

Sheet: 18 1/4 × 12in. (46.4 × 30.5 cm)

Purchase, with funds from the Neysa McMein Purchase Award and Barbara Babcock Millhouse

Machine Ornament (Floor 8)



96.174

Sculpture

Man Ray

New York, 1917/1966

Nickel plated and painted bronze

Overall: 17 × 9 5/16in. (43.2 × 23.7 cm)

Purchase, with funds from the Modern Painting and Sculpture Committee

Whitney Museum of American Art

America Is Hard to See

May 1–September 27, 2015

Machine Ornament (Floor 8)



72.131

Photographs

Man Ray

Contrasted Circular Forms with Pair of Optical Black Dots, 1923

Gelatin silver print

Sheet: 9 3/8 × 7 1/16in. (23.8 × 17.9 cm)

Purchase, with funds from the Simon Foundation, Inc.

Machine Ornament (Floor 8)



72.130

Photographs

Man Ray

Metal Laboratory Objects, 1922

Gelatin silver print

Sheet: 9 3/8 × 7in. (23.8 × 17.8 cm)

Purchase, with funds from the Simon Foundation, Inc.

Machine Ornament (Floor 8)



2014.247

Photographs

Toyo Miyatake

Self Portrait, (1932)

Gelatin silver print

Sheet: 10 × 7 15/16in. (25.4 × 20.2 cm)

Image: 10 × 7 15/16in. (25.4 × 20.2 cm)

Gift of the Alan Miyatake Family

Machine Ornament (Floor 8)



81.9

Paintings

Georgia O'Keeffe

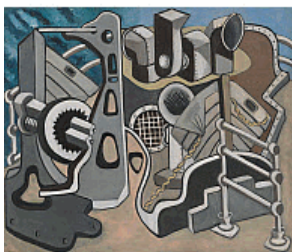
Black and White, (1930)

Oil on canvas

Overall: 36 × 24 1/8in. (91.4 × 61.3 cm)

Purchase, with funds from Mr. and Mrs. R. Crosby Kemper in honor of the Museum's 50th Anniversary

Machine Ornament (Floor 8)



95.24

Paintings

I. Rice Pereira

Boat Composite, (1932)

Oil on linen

Overall: 48 1/8 × 59 5/8in. (122.2 × 151.4 cm)

Purchase, with funds from the Modern Painting and Sculpture Committee

Whitney Museum of American Art

America Is Hard to See

May 1–September 27, 2015

Machine Ornament (Floor 8)



79.6a-c

Sculpture

Theodore Roszak

Bi-Polar in Red, 1940

Metal, plastic and wood

Overall: 54 5/16 × 8 5/8 × 8 5/8 in. (138 × 21.9 × 21.9 cm)

Purchase, with funds from the Burroughs Wellcome Purchase Fund and the National Endowment for the Arts

Machine Ornament (Floor 8)



86.5.2a-b

Paintings

Morton Schamberg

Untitled (Mechanical Abstraction), (1916)

Oil on composition board

Overall (sight): 19 5/8 × 15 11/16 in. (49.8 × 39.8 cm)

50th Anniversary Gift of Mrs. Jean Whitehill

Machine Ornament (Floor 8)



32.43

Paintings

Charles Sheeler

River Rouge Plant, 1932

Oil and pencil on canvas

Overall (sight): 20 3/8 × 24 5/16 in. (51.8 × 61.8 cm)

Purchase

Machine Ornament (Floor 8)



2012.241

Photographs

Edward Steichen

Self-Portrait with Photographer's Paraphernalia, 1929

Gelatin silver print

Gift of Richard and Jackie Hollander in memory of Ellyn Hollander

Machine Ornament (Floor 8)



2012.206

Photographs

Edward Steichen

Advertisement for Gorham Silver, (1929)

Gelatin silver print

Sheet: 10 × 8 in. (25.4 × 20.3 cm)

Image: 10 × 8 in. (25.4 × 20.3 cm)

Gift of Richard and Jackie Hollander in memory of Ellyn Hollander

Whitney Museum of American Art

America Is Hard to See

May 1–September 27, 2015

Machine Ornament (Floor 8)



2012.205

Photographs

Edward Steichen

Ad for Coty Lipstick, (c. 1930)

Gelatin silver print

Sheet: 9 15/16 × 7 15/16in. (25.2 × 20.2 cm)

Image: 9 15/16 × 7 15/16in. (25.2 × 20.2 cm)

Gift of Richard and Jackie Hollander in memory of Elynn Hollander

Machine Ornament (Floor 8)



2007.76

Photographs

Ralph Steiner

(Louis Lozowick with gears), (1929)

Gelatin silver print

Sheet: 10 × 7 15/16in. (25.4 × 20.2 cm)

Image: 9 9/16 × 7 5/8in. (24.3 × 19.4 cm)

Gift of The American Contemporary Art Foundation, Inc., Leonard A. Lauder, President

Machine Ornament (Floor 8)



42.15

Paintings

Joseph Stella

The Brooklyn Bridge: Variation on an Old Theme, (1939)

Oil on canvas

Overall: 70 1/4 × 42 3/16in. (178.4 × 107.2 cm)

Purchase

Machine Ornament (Floor 8)



77.58

Sculpture

John Storrs

Forms in Space, (c. 1924)

Aluminum, brass, copper, and wood on marble base

Overall: 28 1/8 × 5 1/2 × 5 1/4in. (71.4 × 14 × 13.3 cm)

Gift of Charles Simon

Floor 8 entrance



84.37

Sculpture

John Storrs

Forms in Space #1, (c. 1924)

Marble

Overall: 77 × 13 3/4 × 8 3/8in. (195.6 × 34.9 × 21.3 cm)

Overall (with base): 89 × 15 1/4 × 9 5/8in. (226.1 × 38.7 × 24.5 cm)

50th Anniversary Gift of Mr. and Mrs. B. H. Friedman in honor of Gertrude Vanderbilt Whitney, Flora Whitney Miller, and Flora Miller Biddle

Whitney Museum of American Art

America Is Hard to See

May 1–September 27, 2015

Floor 8 entrance



31.96

Paintings
George Bellows
Floating Ice, 1910
Oil on canvas
Overall: 45 × 63in. (114.3 × 160 cm)
Gift of Gertrude Vanderbilt Whitney

Floor 8 terrace



83.5a-b

Sculpture
Joel Shapiro
Untitled, (1980-1981)
Bronze
Overall: 51 13/16 × 60 1/8 × 45 1/8in. (131.6 × 152.7 × 114.6 cm)
Purchase, with funds from the Painting and Sculpture Committee

ROBERT W. WILSON GALLERIES

Breaking the Prairie (Floor 7)



P.2014.46

Photographs
Ansel Adams
Moonrise, Hernandez, New Mexico, 1941
Gelatin silver print

Promised gift of Sondra Gilman Gonzalez-Falla and Celso Gonzalez-Falla to Whitney Museum of American Art, New York and The Gilman and Gonzalez-Falla Arts Foundation

Breaking the Prairie (Floor 7)



31.100

Paintings
Thomas Hart Benton
The Lord is my Shepherd, (1926)
Tempera and oil on canvas
Overall: 33 3/8 × 27 7/16in. (84.8 × 69.7 cm)
Image: 32 5/8 × 26 3/4in. (82.9 × 67.9 cm)
Purchase

Breaking the Prairie (Floor 7)



35.1

Paintings
Henry Billings
Lehigh Valley, (c. 1930)
Oil and graphite pencil on composition board
Overall: 20 × 25in. (50.8 × 63.5 cm)
Purchase

Whitney Museum of American Art
America Is Hard to See
May 1–September 27, 2015

Breaking the Prairie (Floor 7)

2001.35

Drawings
James Castle
Untitled (Interior with stove and wood box), n.d.
Soot and spit on found paper
Sheet (Irregular): 7 × 10 1/2in. (17.8 × 26.7 cm)
Gift of an anonymous donor



Breaking the Prairie (Floor 7)

2001.33

Drawings
James Castle
Untitled (farm scene with road), n.d.
Soot and spit on found board
Sheet: 9 5/8 × 14 1/8in. (24.4 × 35.9 cm)
Gift of an anonymous donor



Breaking the Prairie (Floor 7)

2013.103

Sculpture
Elizabeth Catlett
Head, (1947)
Terracotta
Overall: 10 3/4 × 6 1/2 × 8 3/4in. (27.3 × 16.5 × 22.2 cm)
Purchase, with funds from the Jack E. Chachkes Purchase Fund, the Katherine Schmidt Shubert Purchase Fund, and the Wilfred P. and Rose J. Cohen Purchase Fund in memory of Cecil Joseph Weekes



Breaking the Prairie (Floor 7)

31.159

Paintings
John Steuart Curry
Baptism in Kansas, (1928)
Oil on canvas
Overall: 40 1/4 × 50 1/4in. (102.2 × 127.6 cm)
Gift of Gertrude Vanderbilt Whitney



Breaking the Prairie (Floor 7)

50.17

Paintings
Arshile Gorky
The Artist and His Mother, (1926-c. 1936)
Oil on canvas
Overall: 60 × 50 1/4in. (152.4 × 127.6 cm)
Gift of Julien Levy for Maro and Natasha Gorky in memory of their father

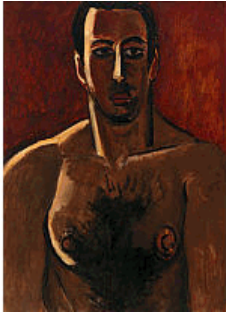


Whitney Museum of American Art

America Is Hard to See

May 1–September 27, 2015

Breaking the Prairie (Floor 7)



2005.89

Paintings

Marsden Hartley

Madawaska, Acadian Light-Heavy, Third Arrangement, (1940)

Oil on composition board

Overall: 27 7/8 × 21 3/4in. (70.8 × 55.2 cm)

Gift of Nina and Herman Schneider, Gertrude Vanderbilt Whitney, and Dr. Meyer A.

Pearlman by exchange, purchase by exchange, and purchase with funds from the Director's Discretionary Fund

Breaking the Prairie (Floor 7)



70.1170

Paintings

Edward Hopper

Railroad Sunset, (1929)

Oil on canvas

Overall: 29 5/16 × 48 1/8in. (74.5 × 122.2 cm)

Josephine N. Hopper Bequest

Breaking the Prairie (Floor 7)



36.144

Paintings

Joe Jones

American Farm, (1936)

Oil and tempera on canvas

Overall: 29 13/16 × 39 15/16in. (75.7 × 101.4 cm)

Purchase

Breaking the Prairie (Floor 7)



94.171

Paintings

Georgia O'Keeffe

Summer Days, (1936)

Oil on canvas

Overall: 36 1/8 × 30 1/8in. (91.8 × 76.5 cm)

Gift of Calvin Klein

Breaking the Prairie (Floor 7)



2015.26

Prints

Chiura Obata

Evening Glow at Mono Lake, from Mono Mills, (1930)

Color woodblock print

Sheet (sight): 17 15/16 × 13 1/8in. (45.6 × 33.3 cm)

Image: 15 11/16 × 10 15/16in. (39.8 × 27.8 cm)

Purchase, with funds from the Print Committee

Whitney Museum of American Art

America Is Hard to See

May 1–September 27, 2015

Breaking the Prairie (Floor 7)



2015.24

Prints

Chiura Obata

Full Moon, Pasadena, California, 1930

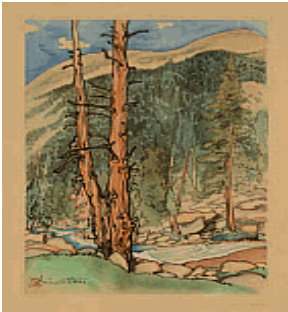
Color woodblock print

Sheet: 13 1/8 × 17 13/16in. (33.3 × 45.2 cm)

Image: 11 × 15 5/8in. (27.9 × 39.7 cm)

Gift of Gyo Obata

Breaking the Prairie (Floor 7)



2015.23

Prints

Chiura Obata

Upper Lyell Fork, near Lyell Glacier, (1930)

Color woodblock print

Sheet: 17 3/4 × 13 1/8in. (45.1 × 33.3 cm)

Image: 15 11/16 × 11in. (39.8 × 27.9 cm)

Gift of Gyo Obata

Breaking the Prairie (Floor 7)



2015.21

Prints

Chiura Obata

Mono Crater, 1930

Color woodblock print

Sheet: 13 1/4 × 17 3/4in. (33.7 × 45.1 cm)

Image: 11 × 15 3/4in. (27.9 × 40 cm)

Gift of Gyo Obata

Breaking the Prairie (Floor 7)



2015.17

Prints

Chiura Obata

Silence, Last Twilight on an Unknown Lake, Johnson Peak, (1930)

Color woodblock print

Sheet: 13 1/4 × 17 15/16in. (33.7 × 45.6 cm)

Image: 11 × 15 11/16in. (27.9 × 39.8 cm)

Gift of Gyo Obata

Breaking the Prairie (Floor 7)



2014.280

Prints

Chiura Obata

Evening Glow of Yosemite Fall, 1930

Woodblock print

Sheet: 17 7/8 × 13 1/8in. (45.4 × 33.3 cm)

Image: 15 7/16 × 10 7/8in. (39.2 × 27.6 cm)

Gift of Gyo Obata

Whitney Museum of American Art

America Is Hard to See

May 1–September 27, 2015

Breaking the Prairie (Floor 7)



2015.22

Prints
Chiura Obata
Lake Mary, Inyo National Forest, 1930
Color woodblock print
Sheet: 13 1/16 × 17 15/16in. (33.2 × 45.6 cm)
Image: 11 × 15 3/4in. (27.9 × 40 cm)
Gift of Gyo Obata

Breaking the Prairie (Floor 7)



2015.13

Prints
Chiura Obata
Sundown at Tioga, Tioga Park, (1930)
Color woodblock print
Sheet: 13 1/8 × 17 15/16in. (33.3 × 45.6 cm)
Image: 11 × 15 3/4in. (27.9 × 40 cm)
Gift of Gyo Obata

Breaking the Prairie (Floor 7)



41.27

Paintings
Horace Pippin
The Buffalo Hunt, (1933)
Oil on canvas
Overall: 21 5/16 × 31 5/16in. (54.1 × 79.5 cm)
Purchase

Breaking the Prairie (Floor 7)



95.215

Drawings
Bill Traylor
Walking Man, (1939-1942)
Opaque watercolor and graphite pencil on board
Sheet (Irregular): 13 1/16 × 7 1/4in. (33.1 × 18.4 cm)
Gift of Eugenia and Charles Shannon

Breaking the Prairie (Floor 7)



52.25

Drawings
Charles White
Preacher, 1952
Pen and ink and graphite pencil on board
Sheet: 22 13/16 × 29 15/16 × 3/16in. (57.9 × 76 × 0.5 cm)
Purchase

Whitney Museum of American Art

America Is Hard to See

May 1–September 27, 2015

Breaking the Prairie (Floor 7)

81.33.2a-c

Drawings

Grant Wood

Study for Breaking the Prairie, 1935-1939

Colored pencil, chalk, and graphite pencil on paper

Overall: 22 3/4 × 80 1/4in. (57.8 × 203.8 cm)

Gift of Mr. and Mrs. George D. Stoddard



Rose Castle (Floor 7)

33.5

Paintings

Peter Blume

Light of the World, 1932

Oil on composition board

Overall: 16 5/8 × 18 7/8in. (42.2 × 47.9 cm)

Frame (metal, silver): 18 1/8 × 20 3/16 × 1 5/16in. (46 × 51.3 × 3.3 cm)

Purchase



Rose Castle (Floor 7)

64.51

Sculpture

Joseph Cornell

Rose Castle, (1945)

Assemblage

Overall: 11 1/2 × 14 15/16 × 4 1/16in. (29.2 × 37.9 × 10.3 cm)

Kay Sage Tanguy Bequest



Rose Castle (Floor 7)

P.2014.64

Photographs

Walker Evans

Torn Movie Poster, 1931

Gelatin silver print

Sheet: 6 7/16 × 4 5/16in. (16.4 × 11 cm)

Image: 6 7/16 × 4 5/16in. (16.4 × 11 cm)

Mount: 12 9/16 × 10 1/8 × 1/16in. (31.9 × 25.7 × 0.2 cm)

Promised gift of Sondra Gilman Gonzalez-Falla and Celso Gonzalez-Falla to Whitney



Rose Castle (Floor 7)

2001.85

Photographs

Andreas Feininger

Diver, 1949

Gelatin silver print

Sheet: 13 3/8 × 10 5/8in. (34 × 27 cm)

Gift of the Feininger Family



Whitney Museum of American Art

America Is Hard to See

May 1–September 27, 2015

Rose Castle (Floor 7)



65.78

Paintings
Jared French
State Park, (1946)
Tempera on composition board
Overall: 24 7/16 × 24 1/2in. (62.1 × 62.2 cm)
Gift of Mr. and Mrs. R. H. Donnelley Erdman

Rose Castle (Floor 7)



42.5

Paintings
Louis Guglielmi
Terror in Brooklyn, (1941)
Oil on canvas
Overall: 34 1/8 × 30 3/16in. (86.7 × 76.7 cm)
Purchase

Rose Castle (Floor 7)



50.8

Paintings
Edward Hopper
Seven A. M., (1948)
Oil on canvas
Overall: 30 3/16 × 40 1/8in. (76.7 × 101.9 cm)
Purchase and exchange

Rose Castle (Floor 7)



31.426

Paintings
Edward Hopper
Early Sunday Morning, (1930)
Oil on canvas
Overall: 35 3/16 × 60 1/4in. (89.4 × 153 cm)
Purchase, with funds from Gertrude Vanderbilt Whitney

Rose Castle (Floor 7)



81.17

Prints
Helen Lundeberg
Planets, (1937)
Lithograph
Sheet (Irregular): 16 × 12 1/2in. (40.6 × 31.8 cm)
Image: 11 15/16 × 9in. (30.3 × 22.9 cm)
Purchase, with funds from the M. Anthony Fisher Purchase Fund

Whitney Museum of American Art

America Is Hard to See

May 1–September 27, 2015

Rose Castle (Floor 7)



P.2014.93

Photographs

Man Ray

Untitled, 1931

Gelatin silver print

Sheet (sight): 6 5/16 × 8 7/16in. (16 × 21.4 cm)

Image (sight): 6 5/16 × 8 7/16in. (16 × 21.4 cm)

Promised gift of Sondra Gilman Gonzalez-Falla and Celso Gonzalez-Falla to Whitney Museum of American Art, New York and The Gilman and Gonzalez-Falla Arts

Rose Castle (Floor 7)



98.78.12

Photographs

Man Ray

Juliet in the Mirror, (c. 1940s)

Ink and graphite on gelatin silver print

Overall (Irregular): 9 7/16 × 7 1/16in. (24 × 17.9 cm)

Gift of Anne and Joel Ehrenkranz

Rose Castle (Floor 7)



72.129

Paintings

Man Ray

La Fortune, 1938

Oil on linen

Overall: 23 11/16 × 28 13/16in. (60.2 × 73.2 cm)

Purchase, with funds from the Simon Foundation, Inc.

Rose Castle (Floor 7)



50.23

Paintings

George Tooker

The Subway, (1950)

Tempera on composition board

Overall: 18 1/2 × 36 1/2in. (47 × 92.7 cm)

Purchase, with funds from the Juliana Force Purchase Award

Rose Castle (Floor 7)



77.91

Paintings

Andrew Wyeth

Winter Fields, (1942)

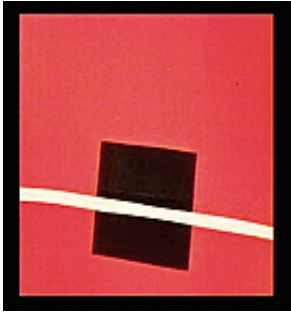
Tempera on composition board

Overall: 17 5/16 × 41in. (44 × 104.1 cm)

Gift of Mr. and Mrs. Benno C. Schmidt, in memory of Mr. Josiah Marvel, first owner of this picture

Whitney Museum of American Art
America Is Hard to See
May 1–September 27, 2015

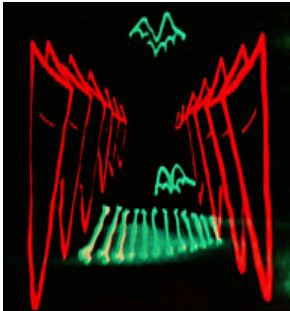
Free Radicals (Floor 7)



2014.233

Film
Robert Breer
Form Phases IV, 1954
16mm film, color, silent, 3:30 min.
Purchase, with funds from the Film, Video, and New Media Committee

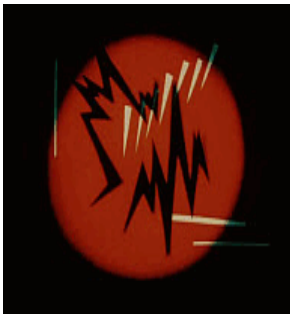
Free Radicals (Floor 7)



2014.266

Film
Mary Ellen Bute
Spook Sport, 1939
16mm film, color, sound, 8 min.
Purchase, with funds from the Film, Video, and New Media Committee

Free Radicals (Floor 7)



2014.102

Film
Mary Ellen Bute
Tarantella, 1940
16mm film, color, sound, 5 min.
Purchase, with funds from the Film, Video, and New Media Committee

Free Radicals (Floor 7)



2014.101

Film
Mary Ellen Bute
Synchromy No. 4: Escape, 1937-1938
16mm film, color, sound, 4 min.
Purchase, with funds from the Film, Video, and New Media Committee

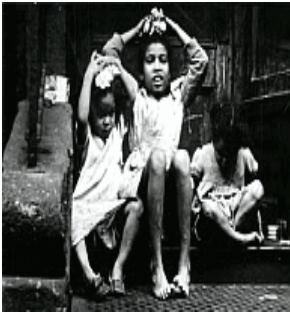
Whitney Museum of American Art
America Is Hard to See
May 1–September 27, 2015

Free Radicals (Floor 7)



2015.45
Film
Maya Deren
At Land, 1944
16mm film, black-and-white, silent, 15 min.
Purchase, with funds from the Film, Video, and New Media Committee

Free Radicals (Floor 7)



2014.30
Film
Helen Levitt
In the Street, 1952
16mm film, black-and-white, sound, 15 min., transferred to video
Purchase, with funds from the Film, Video, and New Media Committee

Free Radicals (Floor 7)



2015.7
Film
Len Lye
Free Radicals, 1958/1979
16mm film, black-and-white, sound, 5 min.
Aspect Ratio: 1:1.33
Purchase, with funds from the Film, Video, and New Media Committee

Free Radicals (Floor 7)

2015.42
Film
Raphael Montañez Ortiz
Cowboy and "Indian" Film, 1957-1958
16mm film, black-and-white, sound, 2:19 min., transferred to video
Gift of the artist

Free Radicals (Floor 7)

2015.41
Film
Raphael Montañez Ortiz
Newsreel, 1958
16mm film, black-and-white, sound, 1:40 min., transferred to video
Gift of the artist

Whitney Museum of American Art

America Is Hard to See

May 1–September 27, 2015

The Circus (Floor 7)



31.95

Paintings

George Bellows

Dempsey and Firpo, (1924)

Oil on canvas

Overall: 51 1/8 × 63 1/4in. (129.9 × 160.7 cm)

Purchase, with funds from Gertrude Vanderbilt Whitney

The Circus (Floor 7)



85.49.2

Paintings

Thomas Hart Benton

Poker Night (from A Streetcar Named Desire), 1948

Tempera and oil on linen mounted on composition board

Sheet (sight): 36 × 48in. (91.4 × 121.9 cm)

Mrs. Percy Uris Bequest

The Circus (Floor 7)



64.42a-b

Paintings

Paul Cadmus

Sailors and Floosies, 1938

Oil and tempera on linen mounted on composition board, with wood frame

Overall (framed): 33 11/16 × 48 1/2in. (85.6 × 123.2 cm)

Gift of Malcolm S. Forbes

The Circus (Floor 7)



83.36.1-72

Sculpture

Alexander Calder

Calder's Circus, (1926-1931)

Wire, wood, metal, cloth, yarn, paper, cardboard, leather, string, rubber tubing, corks, buttons, rhinestones, pipe cleaners, and bottle caps

Overall: 54 × 94 1/4 × 94 1/4in. (137.2 × 239.4 × 239.4 cm)

Purchase, with funds from a public fundraising campaign in May 1982. One half the funds were contributed by the Robert Wood Johnson Jr. Charitable Trust. Additional

The Circus (Floor 7)



2014.21

Drawings

Miguel Covarrubias

Scene: "The Last Jump". Cabaret on a Saturday Night, (1924)

Brush and ink, ink wash, and graphite pencil on paper

Sheet: 14 3/8 × 11 7/16in. (36.5 × 29.1 cm)

Purchase, with funds from the Drawing Committee

Whitney Museum of American Art

America Is Hard to See

May 1–September 27, 2015

The Circus (Floor 7)



2014.134

Photographs
Roy DeCarava
Elvin Jones, (1961)
Gelatin silver print mounted on board
Sheet (sight): 12 11/16 × 8 3/4in. (32.2 × 22.2 cm)
Image (sight): 12 11/16 × 8 3/4in. (32.2 × 22.2 cm)
Mount (mat board): 20 × 16 × 1/8in. (50.8 × 40.6 × 0.3 cm)
Gift of Sherry DeCarava

The Circus (Floor 7)



98.12.3

Photographs
Roy DeCarava
Coltrane and Elvin, (1960)
Gelatin silver print
Sheet: 10 7/8 × 13 7/8in. (27.6 × 35.2 cm)
Image: 9 15/16 × 12 7/8in. (25.2 × 32.7 cm)
Mount: 14 5/8 × 18 5/8in. (37.1 × 47.3 cm)
Purchase, with funds from the Photography Committee

The Circus (Floor 7)



68.16

Drawings
Charles Demuth
Distinguished Air, 1930
Watercolor and graphite pencil on paper
Sheet (Irregular): 16 1/4 × 12 3/16in. (41.3 × 31 cm)
Purchase, with funds from the Friends of the Whitney Museum of American Art and Charles Simon

The Circus (Floor 7)



31.724

Prints
Mabel Dwight
Stick 'Em Up, 1928
Lithograph
Sheet: 11 1/2 × 15 3/8in. (29.2 × 39.1 cm)
Image: 10 5/16 × 10 1/4in. (26.2 × 26 cm)
Gift of Gertrude Vanderbilt Whitney

The Circus (Floor 7)



31.718

Prints
Mabel Dwight
Aquarium, 1928
Lithograph
Sheet: 11 5/8 × 16in. (29.5 × 40.6 cm)
Image: 10 5/16 × 10 3/4in. (26.2 × 27.3 cm)
Gift of Gertrude Vanderbilt Whitney

Whitney Museum of American Art

America Is Hard to See

May 1–September 27, 2015

The Circus (Floor 7)



98.12.5

Photographs

Robert Frank

Formal Reception, 1954

Gelatin silver print

Sheet: 11 × 14in. (27.9 × 35.6 cm)

Image: 8 15/16 × 13 1/2in. (22.7 × 34.3 cm) Purchase, with funds from the Photography Committee

The Circus (Floor 7)



2011.65

Drawings

Edward Hopper

Study for Nighthawks, (1941 or 1942)

Fabricated chalk and charcoal on paper

Sheet: 11 1/8 × 15in. (28.3 × 38.1 cm)

Image (irregular): 8 1/8 × 14 1/8in. (20.6 × 35.9 cm)

Purchase and gift of Josephine N. Hopper by exchange

The Circus (Floor 7)



95.53

Prints

William H. Johnson

Blind Singer, c. 1942

Screenprint

Sheet: 17 1/2 × 11 9/16in. (44.5 × 29.4 cm) Purchase,

with funds from the Print Committee

The Circus (Floor 7)



95.54

Prints

William H. Johnson

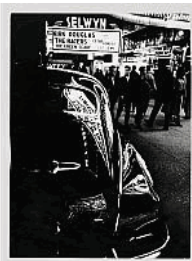
Jitterbugs VI, (1941-1942)

Screenprint

Sheet (Irregular): 17 7/16 × 11 1/4in. (44.3 × 28.6 cm)

Purchase, with funds from the Print Committee

The Circus (Floor 7)



96.64

Photographs

William Klein

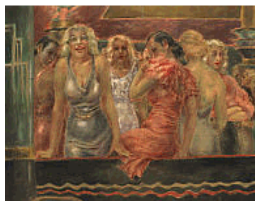
Selwyn, 42nd Street, New York, 1955

Gelatin silver print

Overall: 11 7/8 × 9 7/16in. (30.2 × 24 cm)

Purchase, with funds from the Photography Committee

The Circus (Floor 7)



80.31.10

Paintings

Reginald Marsh

Ten Cents a Dance, 1933

Tempera on composition board

Overall: 35 15/16 × 47 15/16in. (91.3 × 121.8 cm)

Felicia Meyer Marsh Bequest

Whitney Museum of American Art

America Is Hard to See

May 1–September 27, 2015

The Circus (Floor 7)



37.43a-b

Paintings
Reginald Marsh
Twenty Cent Movie, 1936
Carbon pencil, ink, and oil on composition board
Overall: 30 × 40in. (76.2 × 101.6 cm)
Purchase

The Circus (Floor 7)



95.210

Photographs
Lisette Model
Albert-Alberta, Hubert's Forty-Second Street Flea Circus, New York, (1945)
Gelatin silver print
Overall: 13 3/8 × 9 1/4in. (34 × 23.5 cm)
Gift of the Estate of Lisette Model

The Circus (Floor 7)



97.98.12

Photographs
Lisette Model
Sammy's, New York, (c. 1940-1944, printed 1950s)
Gelatin silver print
Overall: 13 3/4 × 10 13/16in. (34.9 × 27.5 cm)
Purchase, with funds from the Photography Committee

The Circus (Floor 7)



E.2007.0640

Film
Jean Painlevé
Le Grand Cirque Calder 1927, 1955
16mm film, color, sound, 45 min., transferred to video
Courtesy Les Documents Cinématographiques, Paris

The Circus (Floor 7)



2012.240

Photographs
Edward Steichen
Paul Robeson as the Emperor Jones, (1933)
Gelatin silver print mounted on board
Sheet: 9 15/16 × 8in. (25.2 × 20.3 cm)
Image: 9 15/16 × 8in. (25.2 × 20.3 cm)
Mount: 13 11/16 × 10 7/8 × 1/16in. (34.8 × 27.6 × 0.2 cm)
Gift of Richard and Jackie Hollander in memory of Eilyn Hollander

The Circus (Floor 7)



96.90.4

Photographs
Weegee
variant of "Slum clearance project--Hell's Kitchen", (c. 1940)
Gelatin silver print
Sheet: 10 15/16 × 13 7/8in. (27.8 × 35.2 cm)
Image: 10 7/16 × 13 5/16in. (26.5 × 33.8 cm)
Gift of Denise Rich

Whitney Museum of American Art
America Is Hard to See
May 1–September 27, 2015

The Circus (Floor 7)



96.90.2
Photographs
Weegee
The Critic, (1943)
Gelatin silver print
Sheet: 11 × 13 7/8in. (27.9 × 35.2 cm)
Image: 10 1/2 × 12 1/2in. (26.7 × 31.8 cm)
Gift of Denise Rich

Fighting with All Our Might (Floor 7)



96.68.4
Prints
Lamar Baker
Fright, (1936-1937)
Etching and aquatint
Sheet: 15 7/8 × 11 1/2in. (40.3 × 29.2 cm)
Plate: 10 13/16 × 8 1/2in. (27.5 × 21.6 cm)
Purchase, with funds from The Lauder Foundation, Leonard and Evelyn Lauder Fund

Fighting with All Our Might (Floor 7)

34.37.1
Prints
Thomas Hart Benton
Mine Strike, (1933)
Lithograph
Sheet: 11 1/2 × 16in. (29.2 × 40.6 cm)
Image: 9 7/8 × 10 3/4in. (25.1 × 27.3 cm)
Purchase

Fighting with All Our Might (Floor 7)



92.58
Photographs
Margaret Bourke-White
The Louisville Flood, (1937, printed c. 1970)
Gelatin silver print
Image: 9 11/16 × 13 3/8in. (24.6 × 34 cm)
Mount (board): 15 15/16 × 19 7/8in. (40.5 × 50.5 cm)
Gift of Sean Callahan

Whitney Museum of American Art

America Is Hard to See

May 1–September 27, 2015

Fighting with All Our Might (Floor 7)



98.97.1

Prints

Bernarda Bryson Shahn

A Mule and A Plow, 1935-1936

Photo-offset lithograph

Sheet (Sight): 38 × 25in. (96.5 × 63.5 cm)

Image: 29 5/8 × 23in. (75.2 × 58.4 cm)

Gift of Jake Milgram Wien in honor of the 95th birthday of Bernarda Bryson Shahn

Fighting with All Our Might (Floor 7)



33.83.2

Prints

Jacob Burck

The Lord Provides, 1934

Lithograph

Sheet (Irregular): 16 × 11 5/16in. (40.6 × 28.7 cm)

Image: 12 × 9in. (30.5 × 22.9 cm)

Purchase

Fighting with All Our Might (Floor 7)

36.32

Drawings

Paul Cadmus

To the Lynching!, (1935)

Graphite pencil and watercolor on paper

Sheet (Irregular): 23 1/2 × 18in. (59.7 × 45.7 cm)

Purchase

Fighting with All Our Might (Floor 7)

96.68.94

Prints

Mabel Dwight

Merchants of Death, 1935

Lithograph

Sheet (Irregular): 9 15/16 × 14 3/8in. (25.2 × 36.5 cm)

Image: 8 1/16 × 13in. (20.5 × 33 cm)

Purchase, with funds from The Lauder Foundation, Leonard and Evelyn Lauder Fund



Fighting with All Our Might (Floor 7)

P.2014.65

Photographs

Walker Evans

Temple Children, Hale County, Alabama, 1936

Gelatin silver print

Overall: 6 3/4 × 9 1/2in. (17.1 × 24.1 cm)

Promised gift of Sondra Gilman Gonzalez-Falla and Celso Gonzalez-Falla to Whitney Museum of American Art, New York and The Gilman and Gonzalez-Falla Arts Foundation



Whitney Museum of American Art
America Is Hard to See
May 1–September 27, 2015

Fighting with All Our Might (Floor 7)



2013.62.18

Prints
Hugo Gellert
The Fifth Column, (1943)
Screenprint and lithograph
Sheet (open): 20 × 32in. (50.8 × 81.3 cm)
Sheet (folded): 20 × 16in. (50.8 × 40.6 cm)
Image: 15 1/8 × 13in. (38.4 × 33 cm)
Purchase, with funds from the Print Committee

Fighting with All Our Might (Floor 7)



2013.62.17

Prints
Hugo Gellert
Fighting with All Our Might, (1943)
Screenprint and lithograph
Sheet (open): 20 × 32in. (50.8 × 81.3 cm)
Sheet (folded): 20 × 16in. (50.8 × 40.6 cm)
Image: 15 × 13in. (38.1 × 33 cm)
Purchase, with funds from the Print Committee

Fighting with All Our Might (Floor 7)



2013.62.11

Prints
Hugo Gellert
Free Man's Duties (#2), (1943)
Screenprint and lithograph
Sheet (open): 20 × 32in. (50.8 × 81.3 cm)
Sheet (folded): 20 × 16in. (50.8 × 40.6 cm)
Image: 15 1/8 × 13 1/16in. (38.4 × 33.2 cm)
Purchase, with funds from the Print Committee

Fighting with All Our Might (Floor 7)



2013.62.9

Prints
Hugo Gellert
The Four Freedoms, (1943)
Screenprint and lithograph
Sheet (open): 20 × 32in. (50.8 × 81.3 cm)
Sheet (folded): 20 × 16in. (50.8 × 40.6 cm)
Image: 15 × 13 1/16in. (38.1 × 33.2 cm)
Purchase, with funds from the Print Committee

Fighting with All Our Might (Floor 7)



2013.62.8

Prints
Hugo Gellert
The People on the March, (1943)
Screenprint and lithograph
Sheet (open): 20 × 32in. (50.8 × 81.3 cm)
Sheet (folded): 20 × 16in. (50.8 × 40.6 cm)
Image: 15 1/8 × 13 1/16in. (38.4 × 33.2 cm)
Purchase, with funds from the Print Committee

Whitney Museum of American Art

America Is Hard to See

May 1–September 27, 2015

Fighting with All Our Might (Floor 7)



2013.62.7

Prints

Hugo Gellert

Religion of Darkness, (1943)

Screenprint and lithograph

Sheet (open): 20 × 32in. (50.8 × 81.3 cm)

Sheet (folded): 20 × 16in. (50.8 × 40.6 cm)

Image: 15 1/16 × 13in. (38.3 × 33 cm)

Purchase, with funds from the Print Committee

Fighting with All Our Might (Floor 7)



2013.62.2

Prints

Hugo Gellert

Free World or Slave World, (1943)

Screenprint and lithograph

Sheet (open): 20 × 32in. (50.8 × 81.3 cm)

Sheet (folded): 20 × 16in. (50.8 × 40.6 cm)

Image: 15 1/4 × 13 1/8in. (38.7 × 33.3 cm)

Purchase, with funds from the Print Committee

Fighting with All Our Might (Floor 7)



2013.62.1

Prints

Hugo Gellert

(Title page), (1943)

Screenprint and lithograph

Sheet (open): 20 × 32in. (50.8 × 81.3 cm)

Sheet (folded): 20 × 16in. (50.8 × 40.6 cm)

Image: 16 3/8 × 13 3/8in. (41.6 × 34 cm)

Purchase, with funds from the Print Committee

Fighting with All Our Might (Floor 7)



99.22.2

Prints

Hugo Gellert

Stake in the Commonwealth, (1935)

Lithograph

Sheet: 19 × 15in. (48.3 × 38.1 cm)

Image: 14 × 12in. (35.6 × 30.5 cm)

Gift of Mary Ryan

Fighting with All Our Might (Floor 7)



94.98

Prints

Hugo Gellert

The Transformation of Money into Capital, (1933)

Lithograph

Sheet (Folded): 22 7/8 × 15 1/2in. (58.1 × 39.4 cm)

Sheet: 22 11/16 × 30 1/4in. (57.6 × 76.8 cm)

Image: 16 × 12in. (40.6 × 30.5 cm)

Gift of Mary Ryan Gallery

Whitney Museum of American Art

America Is Hard to See

May 1–September 27, 2015

Fighting with All Our Might (Floor 7)

95.204

Prints

Boris Gorelick

Lynching, (c. 1936)

Lithograph

Sheet: 13 1/16 × 15 7/8in. (33.2 × 40.3 cm)

Image: 10 7/16 × 13 15/16in. (26.5 × 35.4 cm)

Gift of Leon and Molly C. Gorelick



Fighting with All Our Might (Floor 7)

33.74

Drawings

William Gropper

Finishers, (1933)

Brush and ink, fabricated chalk and graphite pencil on paper

Sheet (Irregular): 16 9/16 × 19 1/2in. (42.1 × 49.5 cm)

Purchase



Fighting with All Our Might (Floor 7)

48.8

Drawings

George Grosz

The Painter of the Hole, (1947)

Watercolor on paper

Sheet (Irregular): 25 9/16 × 18 15/16in. (64.9 × 48.1 cm)

Purchase



Fighting with All Our Might (Floor 7)

82.20

Drawings

Philip Guston

Drawing for Conspirators, 1930

Graphite pencil, pen and ink, colored pencil, and wax crayon on paper

Sheet: 22 11/16 × 14 9/16in. (57.6 × 37 cm)

Purchase, with funds from The Hearst Corporation and The Norman and Rosita Winston Foundation, Inc.



Fighting with All Our Might (Floor 7)

2014.23

Prints

Abraham Jacobs

The Patriots, (1937)

Etching and aquatint

Sheet: 13 × 9 7/8in. (33 × 25.1 cm)

Plate: 8 3/8 × 5 3/8in. (21.3 × 13.7 cm)

Purchase, with funds from Diane Solomon



Whitney Museum of American Art

America Is Hard to See

May 1–September 27, 2015

Fighting with All Our Might (Floor 7)



P.2014.86

Photographs

Dorothea Lange

Demonstration, SF, 1934

Gelatin silver print

Overall: 9 7/8 × 7 7/8in. (25.1 × 20 cm)

Promised gift of Sondra Gilman Gonzalez-Falla and Celso Gonzalez-Falla to Whitney Museum of American Art, New York and The Gilman and Gonzalez-Falla Arts Foundation

Fighting with All Our Might (Floor 7)



P.2014.85

Photographs

Dorothea Lange

Howard Street, 1934

Gelatin silver print

Overall: 21 × 17in. (53.3 × 43.2 cm)

Promised gift of Sondra Gilman Gonzalez-Falla and Celso Gonzalez-Falla to Whitney Museum of American Art, New York and The Gilman and Gonzalez-Falla Arts Foundation

Fighting with All Our Might (Floor 7)



2012.49

Photographs

Dorothea Lange

Child of Migrant Family Suffering from Tuberculosis of the Bone, California, (1935)

Gelatin silver print

Sheet: 10 × 8in. (25.4 × 20.3 cm)

Image: 7 1/2 × 7 9/16in. (19.1 × 19.2 cm)

Purchase, with funds from the Photography Committee

Fighting with All Our Might (Floor 7)



51.19

Paintings

Jacob Lawrence

War Series: Victory, 1947

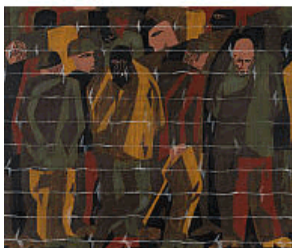
Tempera on composition board

Overall: 20 1/4 × 16 3/16in. (51.4 × 41.1 cm)

Image: 20 1/16 × 15 15/16in. (51 × 40.5 cm)

Gift of Mr. and Mrs. Roy R. Neuberger

Fighting with All Our Might (Floor 7)



51.18

Paintings

Jacob Lawrence

War Series: Reported Missing, 1947

Tempera on composition board

Overall: 15 7/8 × 20 1/16in. (40.3 × 51 cm)

Gift of Mr. and Mrs. Roy R. Neuberger

Whitney Museum of American Art

America Is Hard to See

May 1–September 27, 2015

Fighting with All Our Might (Floor 7)



51.17a-b

Paintings

Jacob Lawrence

War Series: Going Home, 1947

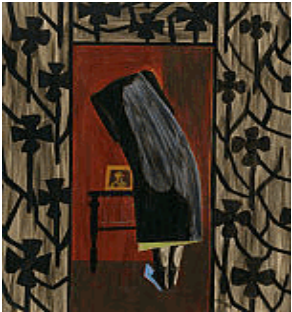
Tempera on composition board

Overall: 16 1/8 × 20 3/16in. (41 × 51.3 cm)

Image: 15 7/8 × 20 1/16 × 1/8in. (40.3 × 51 × 0.3 cm)

Gift of Mr. and Mrs. Roy R. Neuberger

Fighting with All Our Might (Floor 7)



51.16

Paintings

Jacob Lawrence

War Series: Casualty - The Secretary of War Regrets, 1947

Tempera on composition board

Overall: 24 1/4 × 16 3/16in. (61.6 × 41.1 cm)

Image: 20 1/16 × 15 7/8 × 1/8in. (51 × 40.3 × 0.3 cm)

Gift of Mr. and Mrs. Roy R. Neuberger

Fighting with All Our Might (Floor 7)



51.13

Paintings

Jacob Lawrence

War Series: Beachhead, 1947

Tempera on composition board

Overall: 15 7/8 × 20 1/16in. (40.3 × 51 cm)

Gift of Mr. and Mrs. Roy R. Neuberger

Fighting with All Our Might (Floor 7)



51.11

Paintings

Jacob Lawrence

War Series: The Letter, 1946

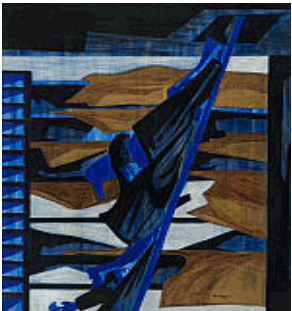
Tempera on composition board

Overall: 20 1/4 × 16 1/8in. (51.4 × 41 cm)

Image: 20 × 15 7/8 × 1/8in. (50.8 × 40.3 × 0.3 cm)

Gift of Mr. and Mrs. Roy R. Neuberger

Fighting with All Our Might (Floor 7)



51.9a-b

Paintings

Jacob Lawrence

War Series: Alert, 1947

Tempera on composition board

Overall: 20 1/4 × 16 1/8in. (51.4 × 41 cm)

Image: 20 × 15 7/8 × 1/8in. (50.8 × 40.3 × 0.3 cm)

Gift of Mr. and Mrs. Roy R. Neuberger

Whitney Museum of American Art

America Is Hard to See

May 1–September 27, 2015

Fighting with All Our Might (Floor 7)

51.8

Paintings

Jacob Lawrence

War Series: Another Patrol, 1946

Tempera on composition board

Overall: 16 1/8 × 20 1/4in. (41 × 51.4 cm)

Image: 15 7/8 × 20 × 1/8in. (40.3 × 50.8 × 0.3 cm)

Gift of Mr. and Mrs. Roy R. Neuberger



Fighting with All Our Might (Floor 7)

51.7

Paintings

Jacob Lawrence

War Series: Shipping Out, 1947

Tempera on composition board

Overall: 20 1/4 × 16 1/16in. (51.4 × 40.8 cm)

Image: 20 × 15 15/16 × 1/8in. (50.8 × 40.5 × 0.3 cm)

Gift of Mr. and Mrs. Roy R. Neuberger



Fighting with All Our Might (Floor 7)

51.6

Paintings

Jacob Lawrence

War Series: Prayer, 1947

Tempera on composition board

Overall: 16 1/8 × 20 1/4in. (41 × 51.4 cm)

Image: 15 7/8 × 20 1/16 × 1/8in. (40.3 × 51 × 0.3 cm)

Gift of Mr. and Mrs. Roy R. Neuberger



Fighting with All Our Might (Floor 7)

97.111

Prints

Herschel Levit

Pieta, (c. 1939)

Lithograph

Sheet: 11 1/16 × 14 1/16in. (28.1 × 35.7 cm)

Image: 9 11/16 × 12 1/2in. (24.6 × 31.8 cm)

Gift of Janice Levit in memory of Herschel Levit



Fighting with All Our Might (Floor 7)

2007.54

Prints

Louis Lozowick

Strike Scene, 1935

Lithograph

Sheet: 15 7/8 × 11 3/8in. (40.3 × 28.9 cm)

Image (Irregular): 10 3/4 × 8 7/8in. (27.3 × 22.5 cm)

Gift of The American Contemporary Art Foundation, Inc., Leonard A. Lauder, President



Whitney Museum of American Art

America Is Hard to See

May 1–September 27, 2015

Fighting with All Our Might (Floor 7)



96.68.203

Prints

Louis Lozowick

Hooverville, 1932

Lithograph

Sheet (Irregular): 14 15/16 × 10 7/8in. (37.9 × 27.6 cm)

Image (Irregular): 11 3/4 × 8in. (29.8 × 20.3 cm)

Purchase, with funds from The Lauder Foundation, Leonard and Evelyn Lauder Fund

Fighting with All Our Might (Floor 7)



94.155

Prints

Louis Lozowick

Lynching, 1936

Lithograph

Sheet: 15 7/8 × 11 9/16in. (40.3 × 29.4 cm)

Image: 10 5/16 × 7 5/16in. (26.2 × 18.6 cm)

Gift of Adele Lozowick

Fighting with All Our Might (Floor 7)



38.19

Prints

Kyra Markham

Lockout, 1937

Lithograph

Sheet: 12 1/4 × 18 11/16in. (31.1 × 47.5 cm)

Image: 10 × 12in. (25.4 × 30.5 cm)

Purchase

Fighting with All Our Might (Floor 7)



96.68.207

Prints

Fletcher Martin

Trouble in Frisco, (1936)

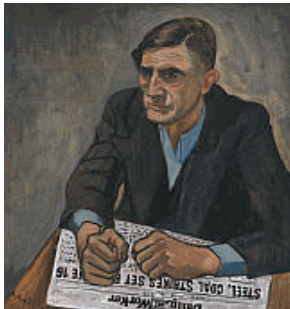
Lithograph

Sheet: 15 7/16 × 13 15/16in. (39.2 × 35.4 cm)

Image: 11 1/4in. (28.6 cm)

Purchase, with funds from The Lauder Foundation, Leonard and Evelyn Lauder Fund

Fighting with All Our Might (Floor 7)



81.12

Paintings

Alice Neel

Pat Whalen, 1935

Oil, ink, and newspaper on canvas

Overall: 27 1/8 × 23 1/8in. (68.9 × 58.7 cm)

Image: 26 3/4 × 22 7/8in. (67.9 × 58.1 cm)

Gift of Dr. Hartley Neel

Whitney Museum of American Art

America Is Hard to See

May 1–September 27, 2015

Fighting with All Our Might (Floor 7)

33.83.6

Prints

Jose Clemente Orozco

Negroes, (1933)

Lithograph

Sheet: 15 13/16 × 11 7/16in. (40.1 × 29.1 cm)

Image: 12 11/16 × 8 15/16in. (32.2 × 22.7 cm)

Purchase



Fighting with All Our Might (Floor 7)

49.22

Paintings

Ben Shahn

The Passion of Sacco and Vanzetti, (1931-1932)

Tempera and gouache on canvas mounted on composition board

Overall: 84 × 48in. (213.4 × 121.9 cm)

Gift of Edith and Milton Lowenthal in memory of Juliana Force



Fighting with All Our Might (Floor 7)

38.11

Drawings

Ben Shahn

Scotts Run, West Virginia, 1937

Tempera on paper mounted on wood

Sheet: 22 5/8 × 28 1/4in. (57.5 × 71.8 cm)

Mount: 23 1/16 × 28 1/2 × 5/16in. (58.6 × 72.4 × 0.8 cm)

Purchase



Fighting with All Our Might (Floor 7)

96.68.292

Prints

Harry Sternberg

Southern Holiday, 1935

Lithograph

Sheet: 23 7/8 × 17 7/8in. (60.6 × 45.4 cm)

Image: 21 3/4 × 15 3/4in. (55.3 × 40 cm)

Purchase, with funds from The Lauder Foundation, Leonard and Evelyn Lauder Fund



Fighting with All Our Might (Floor 7)

98.22.4

Prints

Hale Aspacio Woodruff

Giddap, (1935, printed 1996)

Linoleum cut with chine-collé

Sheet (Irregular): 12 1/16 × 9in. (30.6 × 22.9 cm)

Image: 12 × 9in. (30.5 × 22.9 cm)

Mount: 19 1/16 × 15in. (48.4 × 38.1 cm)

Gift of E. Thomas Williams, Jr. and Auldlyn Higgins Williams



Whitney Museum of American Art

America Is Hard to See

May 1–September 27, 2015

Fighting with All Our Might (Floor 7)



98.22.2

Prints

Hale Aspacio Woodruff

By Parties Unknown, (1935, printed 1996)

Linoleum cut with chine-collé

Sheet (Irregular): 12 × 9in. (30.5 × 22.9 cm)

Image: 12 × 9in. (30.5 × 22.9 cm)

Mount: 19 1/8 × 15in. (48.6 × 38.1 cm)

Gift of E. Thomas Williams, Jr. and Auldlyn Higgins Williams

New York, N.Y., 1955 (Floor 7)



63.38

Sculpture

Ruth Asawa

Number 1 - 1955, (1954, refabricated 1958)

Brass and steel wire

Overall: 63 7/8 × 14 15/16 × 14 15/16in. (162.2 × 37.9 × 37.9 cm)

Gift of Howard Lipman

New York, N.Y., 1955 (Floor 7)



77.80

Sculpture

Louise Bourgeois

Quarantania, (1941)

Painted wood

Overall: 84 × 29 1/4 × 31 1/4in. (213.4 × 74.3 × 79.4 cm)

Gift of an anonymous donor

New York, N.Y., 1955 (Floor 7)



70.1579a-b

Sculpture

John Chamberlain

Velvet White, (1962)

Painted and chromium-plated steel

Overall: 79 1/2 × 52 3/4 × 58 1/4in. (201.9 × 134 × 148 cm)

Gift of the Albert A. List Family

New York, N.Y., 1955 (Floor 7)

2014.355

Prints

Eldzier Cortor

L'Abbatoire IV, (c. 1950-1960s)

Woodcut

14 13/16 × 19 11/16 in.

Gift of the artist in memory of Sophia Rose Cortor

Whitney Museum of American Art

America Is Hard to See

May 1–September 27, 2015

New York, N.Y., 1955 (Floor 7)

2014.354

Prints

Eldzier Cortor

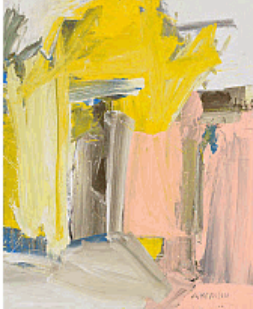
L'Abbattoire III, (c. 1950-1960s)

Woodcut

17 1/8 x 22 1/4in.

Gift of the artist in memory of Sophia Rose Cortor

New York, N.Y., 1955 (Floor 7)



60.63

Paintings

Willem de Kooning

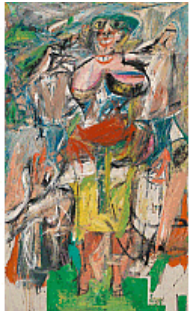
Door to the River, (1960)

Oil on linen

Overall: 80 1/8 x 70 1/8in. (203.5 x 178.1 cm)

Purchase, with funds from the Friends of the Whitney Museum of American Art

New York, N.Y., 1955 (Floor 7)



55.35

Paintings

Willem de Kooning

Woman and Bicycle, (1952-1953)

Oil, enamel, and charcoal on linen

Overall: 76 1/2 x 49 1/8in. (194.3 x 124.8 cm)

Purchase

New York, N.Y., 1955 (Floor 7)



73.85a-i

Sculpture

Mark di Suvero

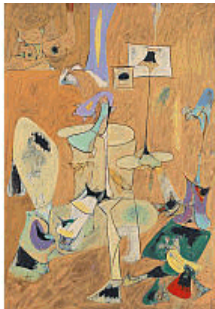
Hankchampion, 1960

Wood, steel hardware and chains

Overall: 77 1/2 x 152 x 109 3/16in. (196.9 x 386.1 x 277.3 cm)

Gift of Mr. and Mrs. Robert C. Scull

New York, N.Y., 1955 (Floor 7)



50.3

Paintings

Arshile Gorky

The Betrothal, II, 1947

Oil and ink on canvas

Overall: 50 3/4 x 38in. (128.9 x 96.5 cm)

Frame: 51 3/16 x 39 x 1 15/16in. (130 x 99.1 x 4.9 cm)

Purchase

Whitney Museum of American Art

America Is Hard to See

May 1–September 27, 2015

New York, N.Y., 1955 (Floor 7)



56.44

Paintings

Philip Guston

Dial, 1956

Oil on linen

Overall: 72 × 76 3/8in. (182.9 × 194 cm)

Purchase

New York, N.Y., 1955 (Floor 7)



58.53

Sculpture

Richard Hunt

Extending Horizontal Form, 1958

Steel

Overall: 23 15/16 × 56 1/2 × 11 3/8in. (60.8 × 143.5 × 28.9 cm)

Purchase, with funds from the Friends of the Whitney Museum of American Art

New York, N.Y., 1955 (Floor 7)



57.10

Paintings

Franz Kline

Mahoning, 1956

Oil and paper on canvas

Overall: 80 3/8 × 100 1/2in. (204.2 × 255.3 cm)

Purchase, with funds from the Friends of the Whitney Museum of American Art

New York, N.Y., 1955 (Floor 7)



87.7

Paintings

Lee Krasner

The Seasons, (1957)

Oil and house paint on canvas

Overall: 92 3/4 × 203 7/8in. (235.6 × 517.8 cm)

Purchase, with funds from Frances and Sydney Lewis by exchange, the Mrs. Percy Uris

Purchase Fund and the Painting and Sculpture Committee

New York, N.Y., 1955 (Floor 7)

E.2015.0142

Paintings

Norman Lewis

Untitled, c. 1946–48

Oil on masonite

20 x 15 1/2 in

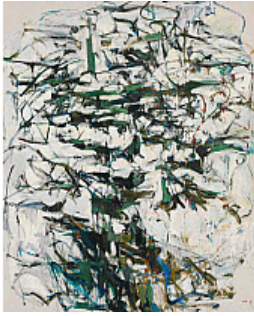
Collection of Raymond J. McGuire

Whitney Museum of American Art

America Is Hard to See

May 1–September 27, 2015

New York, N.Y., 1955 (Floor 7)



58.20

Paintings

Joan Mitchell

Hemlock, 1956

Oil on canvas

Overall: 91 × 80in. (231.1 × 203.2 cm)

Purchase, with funds from the Friends of the Whitney Museum of American Art

New York, N.Y., 1955 (Floor 7)



67.18

Paintings

Barnett Newman

Day One, 1951-1952

Oil on canvas

Overall: 132 1/16 × 50 1/8in. (335.4 × 127.3 cm)

Purchase, with funds from the Friends of the Whitney Museum of American Art

New York, N.Y., 1955 (Floor 7)



55.8

Drawings

Alfonso Ossorio

Number 14-1953, (1953)

Ink and wax on board

Overall: 60 1/2 × 38 1/2 × 1 3/8in. (153.7 × 97.8 × 3.5 cm)

Sheet: 60 × 38in. (152.4 × 96.5 cm)

Purchase

New York, N.Y., 1955 (Floor 7)



53.12

Paintings

Jackson Pollock

Number 27, 1950, 1950

Oil, enamel, and aluminum paint on canvas

Overall: 49 1/16 × 106 1/16in. (124.6 × 269.4 cm)

Purchase

New York, N.Y., 1955 (Floor 7)



2014.99

Paintings

Richard Pousette-Dart

Within the Room, (1942)

Oil on canvas and wood

Overall: 36 × 60in. (91.4 × 152.4 cm)

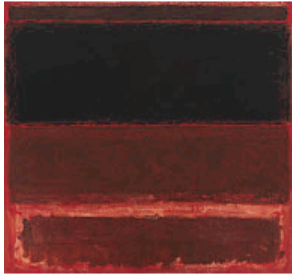
50th Anniversary gift of the artist

Whitney Museum of American Art

America Is Hard to See

May 1–September 27, 2015

New York, N.Y., 1955 (Floor 7)



68.9

Paintings

Mark Rothko

Four Darks in Red, (1958)

Oil on canvas

Overall: 101 13/16 × 116 3/8in. (258.6 × 295.6 cm)

Purchase, with funds from the Friends of the Whitney Museum of American Art, Mr. and Mrs. Eugene M. Schwartz, Mrs. Samuel A. Seaver and Charles Simon

New York, N.Y., 1955 (Floor 7)



54.14

Sculpture

David Smith

Hudson River Landscape, (1951)

Welded painted steel and stainless steel

Overall: 48 3/4 × 72 1/8 × 17 5/16in. (123.8 × 183.2 × 44 cm)

Purchase

New York, N.Y., 1955 (Floor 7)



56.20

Paintings

Hedda Sterne

New York, N.Y., 1955, (1955)

Airbrush and enamel on canvas

Overall: 36 1/4 × 60 1/4in. (92.1 × 153 cm)

Gift of an anonymous donor

JASPER BLOOMBERG OUTDOOR GALLERY

Floor 7 Outdoor Gallery



2011.168

Sculpture

David Smith

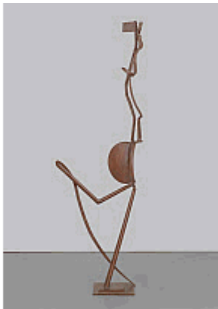
Cubi XXI, 1964

Stainless steel

Overall: 116 1/8 × 41 1/2 × 40 7/8in. (295 × 105.4 × 103.8 cm)

Gift of The Lipman Family Foundation, jointly owned by the Whitney Museum of American Art, New York and Storm King Art Center, Mountainville, New York

Floor 7 Outdoor Gallery



81.42

Sculpture

David Smith

Running Daughter, 1956/1960

Painted steel

Overall: 100 1/2 × 34 × 20 1/4in., 145lb. (255.3 × 86.4 × 51.4 cm, 65.8kg)

50th Anniversary Gift of Mr. and Mrs. Oscar Kolin

Whitney Museum of American Art

America Is Hard to See

May 1–September 27, 2015

Floor 7 Outdoor Gallery



62.15

Sculpture

David Smith

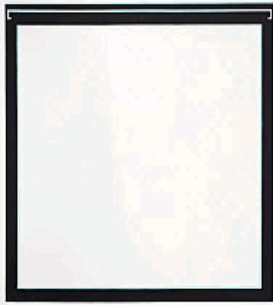
Lectern Sentinel, 1961

Stainless steel

Overall: 101 3/4 × 39 3/4 × 20 13/16in. (258.5 × 101 × 52.9 cm)

Purchase with funds from the Friends of the Whitney Museum of American Art

White Target (Floor 6)



95.217

Paintings

Jo Baer

Untitled, 1962

Oil on linen

Overall: 71 7/8 × 71 7/8in. (182.6 × 182.6 cm)

Gift of Arthur Fleischer, Jr.

White Target (Floor 6)



2014.63

Paintings

Carmen Herrera

Blanco y Verde, 1959

Acrylic on canvas

Overall: 68 1/8 × 60 1/2in. (173 × 153.7 cm)

Purchase, with funds from the Painting and Sculpture Committee

White Target (Floor 6)



71.211

Paintings

Jasper Johns

White Target, (1957)

Encaustic and oil on canvas

Overall: 30 × 30in. (76.2 × 76.2 cm)

Purchase

Whitney Museum of American Art

America Is Hard to See

May 1–September 27, 2015

White Target (Floor 6)



68.47a-b

Sculpture
Ellsworth Kelly
Whites, 1963

Painted aluminum

Overall: 23 × 104 1/2 × 79 1/2in. (58.4 × 265.4 × 201.9 cm)

Purchase, with funds from the Howard and Jean Lipman Foundation, Inc.

White Target (Floor 6)



57.9a-b

Paintings
Ellsworth Kelly
Atlantic, (1956)

Oil on canvas

Overall: 80 1/8 × 115 5/16in. (203.5 × 292.9 cm)

Purchase

White Target (Floor 6)



P.2010.325

Paintings
Agnes Martin
This Rain, 1958

Oil on canvas

Overall (sight): 70 1/8 × 70 1/8 × 1 1/4in. (178.1 × 178.1 × 3.2 cm)

Promised gift of the Fisher Landau Center for Art

White Target (Floor 6)



74.13

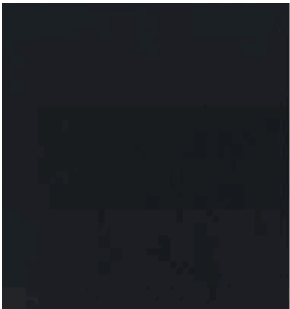
Paintings
John McLaughlin
#1, 1963, 1963

Oil on canvas

Overall: 48 × 59 3/4in. (121.9 × 151.8 cm)

Purchase, with funds from Lily Auchincloss in honor of John I. H. Baur

White Target (Floor 6)



98.16.3

Paintings
Ad Reinhardt
Abstract Painting, (1960-1966)

Oil on linen

Overall: 60 × 60 1/8in. (152.4 × 152.7 cm)

Purchase, with funds from The Lauder Foundation, Leonard and Evelyn Lauder Fund

Whitney Museum of American Art

America Is Hard to See

May 1–September 27, 2015

White Target (Floor 6)



75.22

Paintings

Frank Stella

Die Fahne hoch!, 1959

Enamel on canvas

Overall: 121 5/8 × 72 13/16in. (308.9 × 184.9 cm)

Gift of Mr. and Mrs. Eugene M. Schwartz and purchase with funds from the John I. H. Baur

Purchase Fund, the Charles and Anita Blatt Fund, Peter M. Brant, B. H. Friedman, the Gilman Foundation, Inc., Susan Morse Hilles, The Lauder Foundation, Frances and

Scotch Tape (Floor 6)



91.80.1

Drawings

Wallace Berman

Untitled, (c. 1966)

Transfer type on burned paper mounted on board

Sheet: 10 15/16 × 8 7/16in. (27.8 × 21.4 cm)

Gift of Dr. and Mrs. Merle S. Glick

Scotch Tape (Floor 6)



61.41

Sculpture

Lee Bontecou

Untitled, 1961, (1961)

Welded steel, canvas, wire and rope

Overall: 72 1/2 × 66 × 24 3/4in. (184.2 × 167.6 × 62.9 cm)

Purchase

Scotch Tape (Floor 6)



82.38a-k

Drawings

John Cage

Water Music, (1952)

India ink on 10 sheets of paper with colophon

Sheet (Each): 11 × 17in. (27.9 × 43.2 cm)

Overall (Sight): 54 3/8 × 33 3/4in. (138.1 × 85.7 cm)

Purchase, with funds from an anonymous donor

Scotch Tape (Floor 6)



2007.33

Drawings

Cameron

Fossil (Bat), (1958)

Brush and ink on board

Sheet: 12 × 20in. (30.5 × 50.8 cm)

Purchase, with funds from the Drawing Committee

Whitney Museum of American Art

America Is Hard to See

May 1–September 27, 2015

Scotch Tape (Floor 6)



92.99

Drawings

John Chamberlain

Untitled, (1962)

Fabric, oil and watercolor on paper, enamelled sheet metal, and staples on board Overall:

12 1/4 × 12 7/8 × 3 13/16in. (31.1 × 32.7 × 9.7 cm)

Purchase, with funds from the Drawing Committee by exchange

Scotch Tape (Floor 6)



72.140

Drawings

Chryssa

Newspaper Page, Sock Advertisement, 1959-1962

Two-color screenprint, oil and graphite on paper

Sheet (Irregular): 39 × 24 1/4in. (99.1 × 61.6 cm)

Gift of the artist

Scotch Tape (Floor)



96.48

Sculpture

Bruce Conner

Portrait of Allen Ginsberg, (1960)

Wood, fabric, wax, metal can, glass, feathers, metal, string and spray paint

Overall: 19 15/16 × 11 5/16 × 21 3/8in. (50.6 × 28.7 × 54.3 cm)

Purchase, with funds from the Contemporary Painting and Sculpture Committee

Scotch Tape (Floor 6)



95.170

Paintings

Jay DeFeo

The Rose, (1958-1966)

Oil with wood and mica on canvas

Overall: 128 7/8 × 92 1/4 × 11in. (327.3 × 234.3 × 27.9 cm)

Gift of The Jay DeFeo Trust and purchase, with funds from the Contemporary Painting and Sculpture Committee and the Judith Rothschild Foundation

Scotch Tape (Floor 6)



74.112

Paintings

Jim Dine

The Black Rainbow, 1959-1960

Oil and corrugated cardboard on cardboard

Overall: 39 5/8 × 59 3/4in. (100.7 × 151.8 cm)

Gift of Andy Warhol

Scotch Tape (Floor 6)



2006.6

Drawings

Al Held

Untitled (Life magazine), (1959)

Oil, ink and printed paper collage on Life magazine

Book (irregular): 14 1/2 × 11 5/16 × 1 1/16in. (36.8 × 28.7 × 2.7 cm)

Sheet (each approximate, irregular): 14 1/2 × 11 5/16in. (36.8 × 28.7 cm)

Gift of the artist

Whitney Museum of American Art

America Is Hard to See

May 1–September 27, 2015

Scotch Tape (Floor 6)



95.20

Books

Jess

Tricky Cad, Case 1, (1954)

Lithograph, pen, cut and adhered paper, on paper

Book: 10 1/4 × 9 3/8 × 11/16in. (26 × 23.8 × 1.7 cm)

Sheet (each): 9 7/16 × 7 13/16in. (24 × 19.8 cm)

Purchase, with funds from the Contemporary Painting and Sculpture Committee, the Drawing Committee and the Tom Armstrong Purchase Fund

Scotch Tape (Floor 6)



99.85

Paintings

Ray Johnson

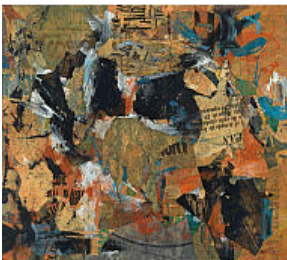
Hand Marilyn Monroe, 1958

Ink, cut paper, and tempera on cardboard mounted on composition board

Overall: 16 3/4 × 13in. (42.5 × 33 cm)

Purchase, with funds from the Painting and Sculpture Committee

Scotch Tape (Floor 6)



62.11

Paintings

Sam Middleton

Out Chorus, 1960

Collage

Overall: 29 7/8 × 35 13/16in. (75.9 × 91 cm)

Gift of the Ford Foundation Purchase Program

Scotch Tape (Floor 6)



70.68a-m

Sculpture

Louise Nevelson

Dawn's Wedding Chapel II, (1959)

Painted wood

Overall (Including base): 115 7/8 × 83 1/2 × 10 1/2in. (294.3 × 212.1 × 26.7 cm)

Base: 6 × 83 1/2 × 10 1/2in. (15.2 × 212.1 × 26.7 cm)

Purchase, with funds from the Howard and Jean Lipman Foundation, Inc.

Scotch Tape (Floor 6)



2002.10

Drawings

Claes Oldenburg

Newspaper Stocking Against Newspaper Ads - "CHROMEQUEEN", 1962

Watercolor, collage, and graphite pencil on newspaper

Sheet (Irregular): 14 15/16 × 10 5/8in. (37.9 × 27 cm)

Gift of The American Contemporary Art Foundation, Inc., Leonard A. Lauder, President

Whitney Museum of American Art

America Is Hard to See

May 1–September 27, 2015

Scotch Tape (Floor 6)



65.33

Sculpture

Raphael Montañez Ortiz

Archaeological Find, Number 9, (1964)

Wood, steel, plastic glues, rope, fabric and horse hair

Overall: 76 3/4 × 66 3/4 × 22in. (195 × 169.6 × 55.9 cm)

Gift of George and Lillian Schwartz

Scotch Tape (Floor 6)



71.170

Sculpture

Noah Purifoy

Untitled, (1970)

Wood, leather, brass, and copper

Overall: 49 3/8 × 28 5/8 × 21 1/4in. (125.4 × 72.7 × 54 cm)

Purchase

Scotch Tape (Floor 6)



91.85

Sculpture

Robert Rauschenberg

Satellite, (1955)

Oil, fabric, paper and wood on canvas with taxidermied pheasant

Overall: 79 3/8 × 43 5/16 × 5 5/8in. (201.6 × 110 × 14.3 cm)

Gift of Claire B. Zeisler and purchase with funds from the Mrs. Percy Uris Purchase Fund

Scotch Tape (Floor 6)



2010.207

Film

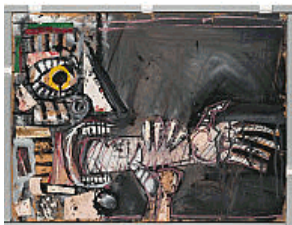
Jack Smith

Scotch Tape, 1959-1962

16mm film, black-and-white, sound, 3 min.

Gift of Gladstone Gallery, New York

Scotch Tape (Floor 6)



2006.97

Drawings

Robert Smithson

Untitled, 1960

Collage and opaque watercolor on board

Overall: 21 × 29 3/8 × 1/8in. (53.3 × 74.6 × 0.3 cm)

Partial gift of Raymond Saroff and purchase, with funds from the Drawing Committee

Whitney Museum of American Art

America Is Hard to See

May 1–September 27, 2015

Scotch Tape (Floor 6)



2015.70

Photographs
Stan VanDerBeek

(Photomontage of stills from "Facescapes"), 1965

Photomontage of gelatin silver prints and magazine photographs mounted on paper and cardboard

Overall: 15 1/8 × 20 1/4in. (38.4 × 51.4 cm)

Purchase, with funds from the Drawing Committee, the Film, Video, and New Committee, the Photography Committee, Gregg G. Seibert, and Craig F. Starr

Large Trademark (Floor 6)



96.12

Photographs

Robert Adams

Motel, 1969, printed c. 1970

Gelatin silver print mounted on paperboard

Mount: 13 × 11in. (33 × 27.9 cm)

Overall: 5 7/8 × 5 15/16in. (14.9 × 15.1 cm)

Purchase, with funds from the Photography Committee

Large Trademark (Floor 6)



95.3

Photographs

Diane Arbus

A family on their lawn one Sunday in Westchester, N.Y., (1968, c. 1969-71)

Gelatin silver print

Sheet: 19 13/16 × 16in. (50.3 × 40.6 cm)

Image (Irregular): 14 3/16 × 14 13/16in. (36 × 37.6 cm)

Purchase, with funds from the Mr. and Mrs. Arthur G. Altschul Purchase Fund, Michele Gerber Klein and the Photography Committee

Large Trademark (Floor 6)



2013.145

Sculpture

Richard Artschwager

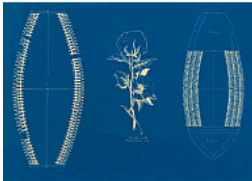
100 Locations (Blp), (1968)

Acrylic on wood

Overall: 14 × 5 1/2 × 7/8in. (35.6 × 14 × 2.2 cm)

Gift of Doris Palca

Large Trademark (Floor 6)



69.77

Paintings

Malcolm Bailey

Untitled, 1969, (1969)

Acrylic on composition board

Overall: 48 × 71 15/16in. (121.9 × 182.7 cm)

Purchase, with funds from the Larry Aldrich Foundation Fund

Large Trademark (Floor 6)



92.21

Photographs

John Baldessari

An Artist is Not Merely the Slavish Announcer, (1966-1968)

Photographic emulsion, varnish, and gesso on canvas

Overall: 59 1/8 × 45 × 7/8in. (150.2 × 114.3 × 2.2 cm)

Purchase, with funds from the Painting and Sculpture Committee and gift of an anonymous donor

Whitney Museum of American Art

America Is Hard to See

May 1–September 27, 2015

Large Trademark (Floor 6)



2012.202

Photographs
Lewis Baltz
Los Angeles, B, 1972
Gelatin silver print
Sheet: 8 × 10in. (20.3 × 25.4 cm)
Image: 6 × 8 15/16in. (15.2 × 22.7 cm)
Gift of Theresa Luisotti

Large Trademark (Floor 6)



69.14

Paintings
Romare Bearden
Eastern Barn, 1968
Collage
Overall: 55 3/4 × 43 15/16in. (141.6 × 111.6 cm)
Purchase

Large Trademark (Floor 6)



70.16

Paintings
Robert Bechtle
'61 Pontiac, 1968-1969
Oil on canvas
Overall: 59 3/4 × 84 1/4in. (151.8 × 214 cm)
Purchase, with funds from the Richard and Dorothy Rodgers Fund

Large Trademark (Floor 6)



95.19

Paintings
Vija Celmins
Heater, 1964
Oil on canvas
Overall: 47 9/16 × 48in. (120.8 × 121.9 cm)
Purchase, with funds from the Contemporary Painting and Sculpture Committee

Large Trademark (Floor 6)



2013.2

Paintings
Allan D'Arcangelo
Madonna and Child, 1963
Acrylic and gesso on canvas
Overall: 68 1/2 × 60 1/8in. (174 × 152.7 cm)
Purchase, with funds from the Painting and Sculpture Committee

Whitney Museum of American Art

America Is Hard to See

May 1–September 27, 2015

Large Trademark (Floor 6)



2009.97

Photographs

William Eggleston

Untitled, (c. 1972, printed 1980)

Dye transfer print

Sheet: 15 15/16 × 19 15/16in. (40.5 × 50.6 cm)

Image: 11 9/16 × 17 7/16in. (29.4 × 44.3 cm)

Frame: 19 11/16 × 24 5/8 × 1 3/8in. (50 × 62.5 × 3.5 cm)

Purchase, with funds from Marcia Dunn and Jonathan Sobel

Large Trademark (Floor 6)



2003.98

Photographs

William Eggleston

Untitled [RCA on TV], (1965-1974, printed 2002)

Dye transfer print

Sheet: 16 × 20in. (40.6 × 50.8 cm)

Image: 12 × 17 7/8in. (30.5 × 45.4 cm)

Purchase, with funds from the Photography Committee

Large Trademark (Floor 6)



2002.463.5

Photographs

Lee Friedlander

Shadow, (1965, printed 1973)

Gelatin silver print mounted on paper

Sheet: 15 3/8 × 20in. (39.1 × 50.8 cm)

Image: 6 5/16 × 9 7/16in. (16 × 24 cm)

Mount (paper): 8 1/4 × 11 7/16in. (21 × 29.1 cm)

Gift of Jeanne and Richard S. Press

Large Trademark (Floor 6)



80.32

Paintings

Jasper Johns

Three Flags, 1958

Encaustic on canvas

Overall: 30 5/8 × 45 1/2 × 4 5/8in. (77.8 × 115.6 × 11.7 cm)

Purchase, with funds from the Gilman Foundation, Inc., The Lauder Foundation, A. Alfred

Taubman, Laura-Lee Whittier Woods, Howard Lipman, and Ed Downe in honor of the

Museum's 50th Anniversary

Large Trademark (Floor 6)



83.3

Paintings

Alex Katz

The Red Smile, (1963)

Oil on canvas

Overall: 78 7/8 × 115in. (200.3 × 292.1 cm)

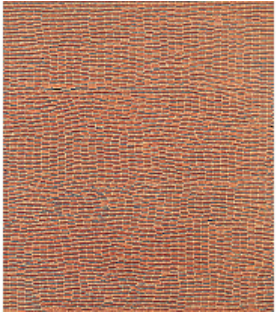
Purchase, with funds from the Painting and Sculpture Committee

Whitney Museum of American Art

America Is Hard to See

May 1–September 27, 2015

Large Trademark (Floor 6)



64.34

Paintings

Yayoi Kusama

Air Mail Stickers, 1962

Collaged paper on canvas

Overall: 71 7/8 × 67 7/8in. (182.6 × 172.4 cm)

Gift of Mr. Hanford Yang

Large Trademark (Floor 6)



66.2

Paintings

Roy Lichtenstein

Little Big Painting, 1965

Oil and acrylic on canvas

Overall: 68 × 80in. (172.7 × 203.2 cm)

Purchase, with funds from the Friends of the Whitney Museum of American Art

Large Trademark (Floor 6)



64.17a-i

Sculpture

Marisol

Women and Dog, (1963-1964)

Wood, plaster, synthetic polymer, and taxidermied dog head

Overall: 73 9/16 × 76 5/8 × 26 3/4in. (186.8 × 194.6 × 67.9 cm)

Purchase, with funds from the Friends of the Whitney Museum of American Art

Large Trademark (Floor 6)



70.44a-o

Sculpture

Claes Oldenburg

Giant Fagends, (1967)

Canvas, urethane foam, wire, wood, latex, and melamine laminate

Overall (with base, irregular): 52 × 96 × 96in. (132.1 × 243.8 × 243.8 cm)

Purchase, with funds from the Friends of the Whitney Museum of American Art

Large Trademark (Floor 6)



2002.79

Photographs

Bill Owens

Untitled, (1970)

Gelatin silver print

Sheet: 9 15/16 × 7 7/8in. (25.2 × 20 cm)

Image: 8 1/2 × 6 7/8in. (21.6 × 17.5 cm)

Gift of Robert Harshorn Shimshak and Marion Brenner

Whitney Museum of American Art

America Is Hard to See

May 1–September 27, 2015

Large Trademark (Floor 6)



64.20

Paintings

James Rosenquist

Broome Street Trucks After Herman Melville, 1963

Oil on linen

Overall: 72 1/8 × 72 1/8 × 3 3/8in. (183.2 × 183.2 × 8.6 cm)

Purchase

Large Trademark (Floor 6)



85.41

Paintings

Edward Ruscha

Large Trademark with Eight Spotlights, 1962

Oil, house paint, ink, and graphite pencil on canvas

Overall: 66 15/16 × 133 1/8in. (170 × 338.1 cm)

Purchase, with funds from the Mrs. Percy Uris Purchase Fund

Large Trademark (Floor 6)



79.4a-f

Sculpture

George Segal

Walk, Don't Walk, (1976)

Plaster, cement, metal, painted wood and electric light

Overall: 109 1/8 × 72 × 74 3/8in. (277.2 × 182.9 × 188.9 cm)

Purchase, with funds from the Louis and Bessie Adler Foundation, Inc., Seymour M. Klein, President, the Gilman Foundation, Inc., the Howard and Jean Lipman Foundation, Inc. and the National Endowment for the Arts

Large Trademark (Floor 6)



64.11

Paintings

Wayne Thiebaud

Pie Counter, 1963

Oil on canvas

Overall: 29 13/16 × 35 15/16in. (75.7 × 91.3 cm)

Purchase, with funds from the Larry Aldrich Foundation Fund

Large Trademark (Floor 6)



71.226

Paintings

Andy Warhol

Before and After, 4, (1962)

Acrylic and graphite pencil on linen

Overall: 72 1/8 × 99 3/4in. (183.2 × 253.4 cm)

Purchase, with funds from Charles Simon

Whitney Museum of American Art

America Is Hard to See

May 1–September 27, 2015

Large Trademark (Floor 6)



68.25

Paintings

Andy Warhol

Green Coca-Cola Bottles, (1962)

Acrylic, screenprint, and graphite pencil on canvas

Overall: 82 3/4 × 57 1/8in. (210.2 × 145.1 cm)

Purchase, with funds from the Friends of the Whitney Museum of American Art

Large Trademark (Floor 6)



69.151a-d

Paintings

Tom Wesselmann

Still Life Number 36, 1964

Found paper, oil, and acrylic on linen, four parts

Overall: 120 × 192 1/4in. (304.8 × 488.3 cm)

Gift of the artist

Large Trademark (Floor 6)



91.93.5

Photographs

Garry Winogrand

Untitled, (c. 1968, printed 1981)

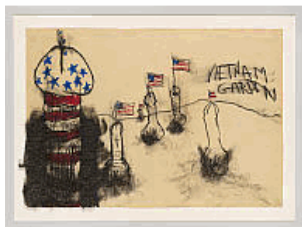
Gelatin silver print

Sheet: 11 × 13 7/8in. (27.9 × 35.2 cm)

Image: 8 3/4 × 13 1/8in. (22.2 × 33.3 cm)

Gift of Barbara and Eugene Schwartz

Raw War (Floor 6)



2010.80

Drawings

Judith Bernstein

Vietnam Garden, 1967

Charcoal, oil stick, and steel wool on paper

Overall (Irregular): 26 3/8 × 40 3/4 × 2in. (67 × 103.5 × 5.1 cm)

Sheet: 26 × 40in. (66 × 101.6 cm)

Frame: 31 × 45 × 2in. (78.7 × 114.3 × 5.1 cm)

Purchase, with funds from the Drawing Committee

Whitney Museum of American Art
America Is Hard to See
May 1–September 27, 2015

Raw War (Floor 6)



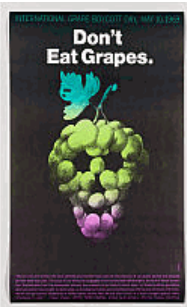
92.111.9
Photographs
Larry Clark
Untitled, (1971, printed 1972)
Gelatin silver print
Sheet: 9 15/16 × 8in. (25.2 × 20.3 cm)
Image: 8 7/16 × 5 3/4in. (21.4 × 14.6 cm)
Purchase, with funds from the Photography Committee

Raw War (Floor 6)



92.111.4
Photographs
Larry Clark
Untitled, (1971, printed 1972)
Gelatin silver print
Sheet: 9 15/16 × 8in. (25.2 × 20.3 cm)
Image: 8 7/16 × 5 3/4in. (21.4 × 14.6 cm)
Purchase, with funds from the Photography Committee

Raw War (Floor 6)



2000.90
Prints
Milton Glaser
Don't Eat Grapes, 1969
Offset lithograph
Sheet: 36 1/2 × 26 1/2in. (92.7 × 67.3 cm)
purchase

Raw War (Floor 6)



68.81a-b
Sculpture
Nancy Grossman
Head 1968, 1968
Wood, leather, metal zippers, paint and metal nails
Overall: 16 1/4 × 6 5/8 × 8 15/16in. (41.3 × 16.8 × 22.7 cm)
Sculpture: 12 × 7 3/4 × 8 3/4in. (30.5 × 19.7 × 22.2 cm)
Base: 4 × 5 1/4 × 5 3/4in. (10.2 × 13.3 × 14.6 cm)
Purchase, with funds from the Howard and Jean Lipman Foundation, Inc.

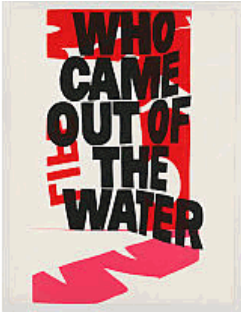
Raw War (Floor 6)



2014.150
Paintings
On Kawara
JULY 4, 1967, 1967
Acrylic on canvas
Overall: 13 1/4 × 17in. (33.7 × 43.2 cm)
Purchase, with funds from the Painting and Sculpture Committee

Whitney Museum of American Art
America Is Hard to See
May 1–September 27, 2015

Raw War (Floor 6)



2007.43
Prints
Sister Corita Kent
Who Came Out Of The Water, 1966
Screenprint
Sheet: 36 3/16 × 29 3/4in. (91.9 × 75.6 cm)
Image (irregular): 36 × 22 1/2in. (91.4 × 57.2 cm)
Purchase with funds from the Print Committee

Raw War (Floor 6)



2009.92
Film
Howard Lester
One Week in Vietnam, 1970
16mm film, color, sound, 3 min.
Purchase, with funds from the Film, Video, and New Media Committee

Raw War (Floor 6)



2008.247
Drawings
Lee Lozano
Untitled (Grinning Face with Ear/Crank), (c. 1962)
Graphite pencil on paper
Sheet: 9 1/4 × 8 5/8in. (23.5 × 21.9 cm)
Gift of Susan Lorence

Raw War (Floor 6)

95.6
Photographs
Danny Lyon
Two SNCC Workers, Selma, (1963)
Gelatin silver print
Overall: 10 15/16 × 13 15/16in. (27.8 × 35.4 cm)
Image: 7 3/16 × 10 9/16in. (18.3 × 26.8 cm)
Purchase, with funds from the Photography Committee

Raw War (Floor 6)



2003.108.1
Prints
Robert Morris
Trench with Chlorine Gas, 1970
Lithograph
Sheet: 24 3/16 × 42 1/2in. (61.5 × 107.9 cm)
Image: 20 1/4 × 40 1/8in. (51.4 × 101.9 cm)
Purchase, with funds from the Print Committee

Whitney Museum of American Art

America Is Hard to See

May 1–September 27, 2015

Raw War (Floor 6)



85.9

Prints
Bruce Nauman
Raw War, 1971
Lithograph
Sheet: 22 7/16 × 28 3/16in. (57 × 71.6 cm)
Purchase, with funds from the Print Committee

Raw War (Floor 6)



69.101

Paintings
Jim Nutt
She's Hit, (1967)
Enamel on wood and plexiglass
Overall: 36 × 24in. (91.4 × 61 cm)
Purchase, with funds from the Larry Aldrich Foundation Fund

Raw War (Floor 6)



2002.53

Drawings
Claes Oldenburg
Smoke Studies During the Burning of Chicago, 1968
Spray paint, collage, and colored pencil on paper
Sheet: 8 1/2 × 11in. (21.6 × 27.9 cm)
Gift of The American Contemporary Art Foundation, Inc., Leonard A. Lauder, President

Raw War (Floor 6)



86.60a-b

Sculpture
Nam June Paik
Magnet TV, 1965
Modified black-and-white television set and magnet
Overall: 38 3/4 × 19 1/4 × 24 1/2in. (98.4 × 48.9 × 62.2 cm)
Purchase, with funds from Dieter Rosenkranz

Raw War (Floor 6)



2006.25

Photographs
Gordon Parks
Black Panther members at Chapter headquarters in San Francisco, California, (1970)
Gelatin silver print
Sheet: 9 5/16 × 13 1/16in. (23.7 × 33.2 cm)
Purchase, with funds from the Photography Committee

Whitney Museum of American Art
America Is Hard to See
May 1–September 27, 2015

Raw War (Floor 6)



2014.51

Prints
Liliana Porter
Untitled (The New York Times, Sunday, September 13, 1970), 1970
Screenprint
Sheet: 27 3/4 × 19 1/2in. (70.5 × 49.5 cm)
Image (irregular): 20 3/4 × 12 3/8in. (52.7 × 31.4 cm)
Purchase, with funds from the Print Committee

Raw War (Floor 6)



74.12a-b

Paintings
Christina Ramberg
Istrian River Lady, 1974
Acrylic on composition board, with wood frame
Overall: 35 3/8 × 31 1/4 × 1 5/8in. (89.9 × 79.4 × 4.1 cm)
Purchase, with funds from Mr. and Mrs. Frederic M. Roberts in memory of their son, James Reed Roberts

Raw War (Floor 6)



88.27

Prints
Robert Rauschenberg
Signs, 1970
Screenprint
Sheet: 42 15/16 × 34in. (109.1 × 86.4 cm)
Image: 35 3/8 × 26 3/4in. (89.9 × 68 cm)
Purchase

Raw War (Floor 6)



94.132

Sculpture
Earl Reiback
Thrust, 1969
Modified television set
Overall: 19 3/4 × 28 5/16 × 20 1/2in. (50.2 × 71.9 × 52.1 cm)
Purchase, with funds from David Bermant and Barbara Wise

Raw War (Floor 6)



2006.50.11

Prints
Ad Reinhardt
No War, (1967)
Lithograph on paper mounted on board
Sheet: 26 1/16 × 20 7/8in. (66.2 × 53 cm)
Image: 11 3/8 × 3 1/4in. (28.9 × 8.3 cm)
Purchase, with funds from the Print Committee

Whitney Museum of American Art

America Is Hard to See

May 1–September 27, 2015

Raw War (Floor 6)



2014.68

Drawings
Faith Ringgold
Women Free Angela, 1971
Collage on board
Sheet (sight): 29 11/16 × 19 7/16in. (75.4 × 49.4 cm)
Purchase, with funds from the Drawing Committee

Raw War (Floor 6)



99.87a-b

Sculpture
Betye Saar
I've Got Rhythm, 1972
Mechanical metronome with wood case, plastic toy, American flag pin, paint, and paper collage
Overall: 8 9/16 × 4 7/16 × 4 7/16in. (21.7 × 11.3 × 11.3 cm)
Purchase, with funds from the Painting and Sculpture Committee

Raw War (Floor 6)



2009.89

Prints
Peter Saul
Angela Davis, (1972)
Lithograph
Sheet: 34 7/8 × 29 7/8in. (88.6 × 75.9 cm)
Purchase, with funds from the Print Committee

Raw War (Floor 6)



69.103

Paintings
Peter Saul
Saigon, 1967
Acrylic, oil, enamel, and ink on canvas
Overall: 93 1/4 × 142 1/4in. (236.9 × 361.3 cm)
Purchase, with funds from the Friends of the Whitney Museum of American Art

Raw War (Floor 6)



69.129

Drawings
May Stevens
Big Daddy Paper Doll, 1969
Opaque watercolor, pen, ink, and graphite pencil on paper
Sheet: 27 × 41 1/8in. (68.6 × 104.5 cm)
Gift of Leonard Bocour

Whitney Museum of American Art

America Is Hard to See

May 1–September 27, 2015

Raw War (Floor 6)



96.53.5

Prints

Andy Warhol

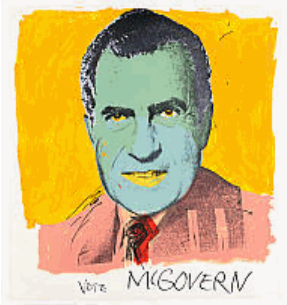
Birmingham Race Riot, (1964)

Screenprint

Sheet: 20 × 24in. (50.8 × 61 cm)

Transfer, from the Frances Mulhall Achilles Library, Special Collections, Whitney Museum of American Art

Raw War (Floor 6)



78.98

Prints

Andy Warhol

Vote McGovern, 1972

Screenprint

Sheet: 41 15/16 × 41 15/16in. (106.5 × 106.5 cm)

Image: 41 15/16 × 41 15/16in. (106.5 × 106.5 cm)

Gift of Fred Mueller

Raw War (Floor 6)

97.113.10

Sculpture

H.C. Westermann

The Evil New War God, 1958

Plated brass, partly chrome-plated

Overall: 16 3/4 × 9 3/4 × 10 7/8in. (42.6 × 24.8 × 27.6 cm)

Overall (with base): 17 3/8 × 12 1/2 × 12 7/8in. (44.1 × 31.8 × 32.7 cm)

Gift of Jean and Howard Lipman

Raw War (Floor 6)



70.41

Paintings

Charles White

Wanted Poster Series #4, 1969

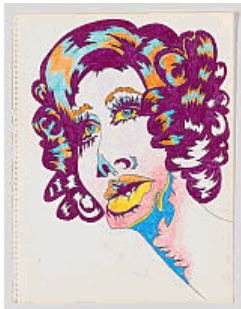
Oil on paper mounted on composition board

Overall: 29 3/8 × 29 1/4in. (74.6 × 74.3 cm)

Image: 24 × 24in. (61 × 61 cm)

Purchase, with funds from The Hament Corporation

Raw War (Floor 6)



2010.167

Drawings

Karl Wirsum

Untitled, (1969)

Colored pencil and ballpoint pen on paper

Sheet (Irregular): 17 1/8 × 14 3/16in. (43.5 × 36 cm)

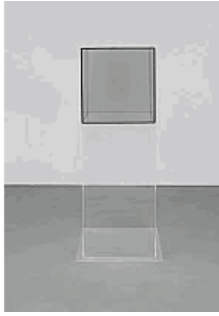
Purchase, with funds from the Drawing Committee

Whitney Museum of American Art

America Is Hard to See

May 1–September 27, 2015

Rational Irrationalism (Floor 6)



80.38a-b

Sculpture

Larry Bell

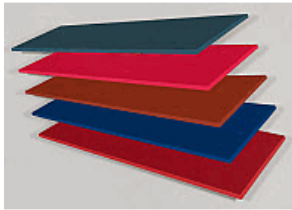
Untitled, (1967)

Mineral-coated glass and rhodium-plated brass on plexiglass base

Overall: 57 1/8 × 24 1/4 × 24 1/4in. (145.1 × 61.6 × 61.6 cm)

Gift of Howard and Jean Lipman

Rational Irrationalism (Floor 6)



68.11

Paintings

Thomas Downing

Five, 1967

Acrylic on shaped canvas

Overall (Irregular): 72 1/4 × 105 1/4in. (183.5 × 267.3 cm)

Purchase, with funds from Philip Morris Incorporated

Rational Irrationalism (Floor 6)



71.215a-c

Sculpture

Rafael Ferrer

Neon Corner, (1970)

Neon, transformer, galvanized steel pipe

Overall: 84 1/2 × 12 × 12in. (214.6 × 30.5 × 30.5 cm)

Gift of Dr. and Mrs. Paul Todd Makler

Rational Irrationalism (Floor 6)



88.17a-b

Sculpture

Eva Hesse

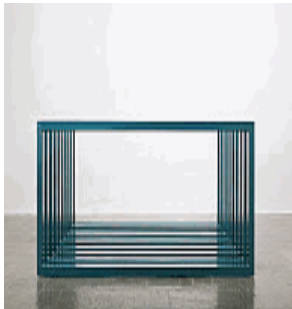
No title, (1969-1970)

Latex, rope, string, and wire

Dimensions variable

Purchase, with funds from Eli and Edythe L. Broad, the Mrs. Percy Uris Purchase Fund, and the Painting and Sculpture Committee

Rational Irrationalism (Floor 6)



72.7a-j

Sculpture

Donald Judd

Untitled, (1966)

Painted steel

Overall: 48 × 120 × 120in. (121.9 × 304.8 × 304.8 cm)

Gift of Howard and Jean Lipman

Whitney Museum of American Art

America Is Hard to See

May 1–September 27, 2015

Rational Irrationalism (Floor 6)



2014.401

Sculpture

Sol LeWitt

Wall Structure, (1965)

Painted wood

Overall: 72 5/16 × 16 1/4 × 15 7/16in. (183.7 × 41.3 × 39.2 cm)

Gift of The Estate of Robert Smithson

Rational Irrationalism (Floor 6)



69.74a-b

Paintings

Alvin Loving

Rational Irrationalism, (1969)

Acrylic on shaped canvas

Overall (Irregular): 82 1/8 × 97in. (208.6 × 246.4 cm)

Purchase, with funds from the Robert C. Scull Fund for Young Artists not in the Collection

Rational Irrationalism (Floor 6)



73.30

Paintings

Brice Marden

Summer Table, 1972-1973

Oil and wax on canvas

Overall: 60 1/4 × 105 3/8in. (153 × 267.7 cm)

Purchase, with funds from the National Endowment for the Arts

Rational Irrationalism (Floor 6)

66.92a-b

Sculpture

John McCracken

Violet Block in Two Parts, (1966)

Plywood, fiberglass and lacquer

Overall: 24 × 45 × 36in. (61 × 114.3 × 91.4 cm)

Purchase, with funds from the Howard and Jean Lipman Foundation, Inc.

Rational Irrationalism (Floor 6)

69.51a-f

Paintings

David Novros

No Title, (1969)

Automotive paint on molded fiberglass and resin, six parts

Overall: 71 7/8 × 216in. (182.6 × 548.6 cm)

Purchase, with funds from Philip Morris Incorporated

Whitney Museum of American Art

America Is Hard to See

May 1–September 27, 2015

Rational Irrationalism (Floor 6)



69.20a-b

Sculpture

Richard Serra

Prop, 1968, refabricated 2007

Lead antimony and steel

Overall: 89 1/2 × 60 × 54in. (227.3 × 152.4 × 137.2 cm)

Purchase, with funds from the Howard and Jean Lipman Foundation, Inc.

Rational Irrationalism (Floor 6)



67.8a-g

Sculpture

Robert Smithson

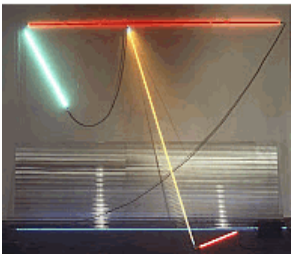
Alogon, (1966)

Painted stainless steel

Overall: 35 1/2 × 73 1/2 × 35 1/2in. (90.2 × 186.7 × 90.2 cm)

Purchase, with funds from the Howard and Jean Lipman Foundation, Inc.

Rational Irrationalism (Floor 6)



69.126

Sculpture

Keith Sonnier

Ba-O-Ba, Number 3, (1969)

Glass and neon with transformer

Overall: 81 1/4 × 122 3/4 × 24in. (206.4 × 311.8 × 61 cm)

Purchase, with funds from the Howard and Jean Lipman Foundation, Inc.

Rational Irrationalism (Floor 6)



2014.108

Drawings

Michelle Stuart

#28 Moray Hill, (1974)

Graphite, earth, and rocks on muslin-mounted paper

Overall: 144 × 62in. (365.8 × 157.5 cm)

Purchase, with funds from the Painting and Sculpture Committee, the Drawing Committee, Steven and Ann Ames, Greg S. Feldman, Martin Hale, Jr., Elizabeth Kabler, Donna Rosen, and Fern Kaye Tessler

Rational Irrationalism (Floor 6)



2006.33

Sculpture

Anne Truitt

Triad, 1977

Acrylic paint on wood

Overall: 90 9/16 × 8 × 8in. (230 × 20.3 × 20.3 cm)

Gift of Ann and Gilbert Kinney

Whitney Museum of American Art

America Is Hard to See

May 1–September 27, 2015

Rational Irrationalism (Floor 6)



75.7

Paintings

Richard Tuttle

Grey Extended Seven, (1967)

Dyed, shaped, and sewn canvas

Overall: 56 1/4 × 55 1/2in. (142.9 × 141 cm)

Purchase, with funds from the Simon Foundation, Inc. and the National Endowment for the Arts

Entry to Works on Paper Study Center (Floor 6)

P.2010.10

Drawings

Carl Andre

days mind case code dust case time guns dock, (1964)

Ink on paper

Sheet (Sight): 10 7/8 × 8 3/8in. (27.6 × 21.3 cm)

Promised gift of Emily Fisher Landau

Entry to Works on Paper Study Center (Floor 6)

P.2010.8

Drawings

Carl Andre

ESSAYONSCULPTUREFORECGOOSSEN, 1964

Ink on paper

Sheet (sight): 10 7/8 × 8 3/8in. (27.6 × 21.3 cm)

Promised gift of Emily Fisher Landau

Entry to Works on Paper Study Center (Floor 6)

P.2010.6

Drawings

Carl Andre

aaaaaaaaaabbbbbbbbccccccccddddd, 1960

Ink on paper

Sheet (Sight): 11 × 8 1/2in. (27.9 × 21.6 cm)

Promised gift of Emily Fisher Landau

STEFAN EDLIS AND GAEL NEESON FOUNDATION OUTDOOR GALLERY

Floor 6 Outdoor Gallery

E.2015.0143

Sculpture

Scott Burton

TWO-PART CHAISE (ENLARGED VERSION) - UNIQUE, 1989

Rosso Granchio granite

Overall: 24 3/8 × 19 3/4 × 84 1/4in. (61.9 × 50.2 × 214 cm)

Courtesy of Max Protetch

Whitney Museum of American Art

America Is Hard to See

May 1–September 27, 2015

Floor 6 Outdoor Gallery



84.32a-d

Sculpture

Scott Burton

Pair of Two-Part Chairs, Obtuse Angle, (1984)

Polished granite

Overall (each): 33 × 24 × 33in., 5291lb. (83.8 × 61 × 83.8 cm, 2400kg)

Purchase, with funds from the Lemberg Foundation, Inc.

Floor 6 Outdoor Gallery



2014.93

Film

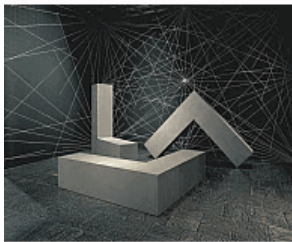
Walter Gutman

Trisha Brown Co. at the Whitney Museum 1971--The Rehearsal, 1971

16mm film, color, silent, 8:30 min., transferred to video

Gift of Robert Haller and Bruce Posner

Floor 6 Outdoor Gallery



76.29a-c

Sculpture

Robert Morris

Untitled (3 Ls), 1965 (refabricated 1970)

Stainless steel

Overall (each): 96 × 96 × 24in. (243.8 × 243.8 × 61 cm)

Gift of Howard and Jean Lipman

Floor 6 Outdoor Gallery



2015.74

Film

Yvonne Rainer

Continuous Project-Altered Daily: A ten-minute segment of an evening-length dance work performed at the Whitney Museum on March 31, April 1 and 2, 1970, 1970

16mm film, black-and-white, silent, 10 min., transferred to video

Purchase, with funds from Kirk August Radke in honor of the Museum's performance supporters

Floor 6 Outdoor Gallery



89.6

Sculpture

Tony Smith

Die, (1962)

Steel

Overall: 72 3/8 × 72 3/8 × 72 3/8in. (183.8 × 183.8 × 183.8 cm)

Purchase, with funds from the Louis and Bessie Adler Foundation, Inc., James Block, The Sondra and Charles Gilman, Jr. Foundation, Inc., Penny and Mike Winton, and the Painting and Sculpture Committee

Whitney Museum of American Art

America Is Hard to See

May 1–September 27, 2015

NEIL BLUHM FAMILY GALLERIES

West Ambulatory adjacent to Threat and Sanctuary (Floor 5)



84.43

Paintings

Jonathan Borofsky

Running People at 2,616,216, (1978-1979)

Latex paint on wall and/or ceiling

Purchase, with funds from the Painting and Sculpture Committee

Threat and Sanctuary (Floor 5)



69.102

Paintings

Chuck Close

Phil, 1969

Acrylic and graphite pencil on canvas

Overall: 108 1/4 × 84in. (275 × 213.4 cm)

Purchase, with funds from Mrs. Robert M. Benjamin

Threat and Sanctuary (Floor 5)



81.38

Paintings

Philip Guston

Cabal, 1977

Oil on linen

Overall: 68 × 116 1/8in. (172.7 × 295 cm)

50th Anniversary Gift of Mr. and Mrs. Raymond J. Learsy

Threat and Sanctuary (Floor 5)



2012.175a-b

Paintings

Neil Jenney

Threat and Sanctuary, 1969

Oil on canvas, with wood frame

Overall (framed): 61 × 123 1/4 × 3 1/4in. (154.9 × 313.1 × 8.3 cm)

Gift from the Emily Fisher Landau Collection

Threat and Sanctuary (Floor 5)



78.34

Paintings

Elizabeth Murray

Children Meeting, 1978

Oil on canvas

Overall: 101 3/16 × 127in. (257 × 322.6 cm)

Purchase, with funds from the Louis and Bessie Adler Foundation, Inc., Seymour M. Klein, President

Whitney Museum of American Art

America Is Hard to See

May 1–September 27, 2015

Threat and Sanctuary (Floor 5)



73.26

Paintings

Robert Reed

Plum Nellie, Sea Stone, 1972

Acrylic and pencil on canvas

Overall: 71 1/8 × 71 1/4in. (180.7 × 181 cm)

Purchase, with funds from The Hament Corporation

Threat and Sanctuary (Floor 5)



79.23

Paintings

Susan Rothenberg

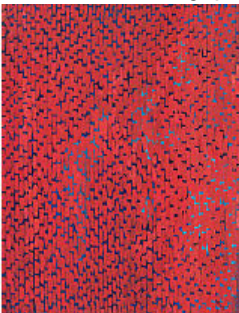
For the Light, 1978-1979

Acrylic and vinyl paint on canvas

Overall: 105 1/8 × 87 1/16in. (267 × 221.1 cm)

Purchase, with funds from Peggy and Richard Danziger

Threat and Sanctuary (Floor 5)



72.58

Paintings

Alma Thomas

Mars Dust, 1972

Acrylic on canvas

Overall: 69 1/4 × 57 1/8in. (175.9 × 145.1 cm)

Purchase, with funds from The Hament Corporation

Threat and Sanctuary (Floor 5)



69.29

Paintings

Cy Twombly

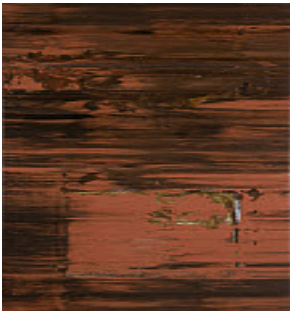
Untitled, (1968)

Oil and crayon on canvas

Overall: 79 × 103 3/8in. (200.7 × 262.6 cm)

Purchase, with funds from Mr. and Mrs. Rudolph B. Schulhof

Threat and Sanctuary (Floor 5)



2015.49

Paintings

Jack Whitten

Sorcerer's Apprentice, 1974

Acrylic on canvas with string

Overall: 88 1/4 × 51in. (224.2 × 129.5 cm)

Purchase, with funds from the Painting and Sculpture Committee

Whitney Museum of American Art
America Is Hard to See
May 1–September 27, 2015

Learn Where the Meat Comes From (Floor 5)



2000.160
Video
Vito Acconci
Claim Excerpts, 1971
Video, black-and-white, sound, 62:11 min.
Purchase, with funds from the Film and Video Committee

Learn Where the Meat Comes From (Floor 5)



2015.43
Video
Eleanor Antin
Representational Painting, 1971
Video, black-and-white, silent, 38 min.
Purchase, with funds from the Film, Video, and New Media Committee

Learn Where the Meat Comes From (Floor 5)



2014.46
Photographs
Asco
Decoy Gang War Victim, 1974, printed 2011
Chromogenic print
Sheet: 16 × 20in. (40.6 × 50.8 cm)
Image: 12 11/16 × 19in. (32.2 × 48.3 cm)
Purchase, with funds from the Photography Committee

Learn Where the Meat Comes From (Floor 5)



2014.44.3
Photographs
Asco
No Movie (Stars), 1978
Gelatin silver print
Sheet: 5 × 7 7/16in. (12.7 × 18.9 cm)
Image: 5 × 7 7/16in. (12.7 × 18.9 cm)
Purchase, with funds from the Photography Committee

Whitney Museum of American Art
America Is Hard to See
May 1–September 27, 2015

Learn Where the Meat Comes From (Floor 5)

2014.44.2

Photographs

Asco

No Canary, 1977

Gelatin silver print

Sheet: 5 × 7 1/2in. (12.7 × 19.1 cm)

Image: 5 × 7 1/2in. (12.7 × 19.1 cm)

Purchase, with funds from the Photography Committee



Learn Where the Meat Comes From (Floor 5)

2009.31

Photographs

Alvin Baltrop

Untitled, (1977)

Gelatin silver print

Sheet: 9 × 6 7/8in. (22.9 × 17.5 cm)

Purchase, with funds from the Photography Committee



Learn Where the Meat Comes From (Floor 5)

2015.51

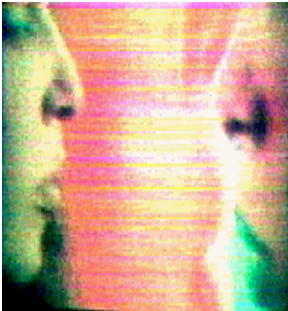
Video

Lynda Benglis

Now, 1973

Video, color, sound, 12 min.

Purchase, with Museum exhibition funds



Learn Where the Meat Comes From (Floor 5)

2009.129

Film

Chris Burden

Documentation of Selected Works 1971-75, 1971-1975

16mm and Super-8 film, color and black-and-white, sound, 34:38 min., transferred to video

Purchase, with funds from Randy Slifka



Learn Where the Meat Comes From (Floor 5)

2014.70

Drawings

Luis Camnitzer

Sample, 1972

Graphite pencil on paper

Sheet (sight): 29 7/8 × 22 1/4in. (75.9 × 56.5 cm)

Purchase, with funds from the Drawing Committee



Whitney Museum of American Art

America Is Hard to See

May 1–September 27, 2015

Learn Where the Meat Comes From (Floor 5)



2014.15

Video

Peter Campus

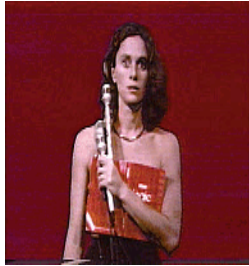
three transitions, 1973

2-inch open reel, color, sound, 4:53 min., transferred to video

Dimensions variable

Gift of the artist

Learn Where the Meat Comes From (Floor 5)



2014.141

Video

Hermine Freed

Art Herstory, 1974

Video, color, sound, 22 min.

Aspect Ratio: 4 × 3in.

Purchase, with funds from the Film, Video, and New Media Committee

Learn Where the Meat Comes From (Floor 5)



2010.226a-c

Drawings

Charles Gaines

Incomplete Text #6 "E", 1978-1979

Photostat (a); Pen and colored inks, correction fluid, and graphite pencil on paper (b); Pen

and colored inks and graphite pencil on paper (c)

Overall (framed): 22 × 53 7/8in. (55.9 × 136.8 cm)

Gift of Meredith Palmer in honor of Adam D. Weinberg

Learn Where the Meat Comes From (Floor 5)



2007.148a-gg

Photographs

Hans Haacke

Shapolsky et al. Manhattan Real Estate Holdings, a Real-Time Social System, as of May 1, 1971, (1971)

Nine photostats, one hundred and forty-two gelatin silver prints, and one hundred and forty-two photocopies

Dimensions variable

Purchased jointly by the Whitney Museum of American Art, New York with funds from

Learn Where the Meat Comes From (Floor 5)



2014.104

Video

Ulysses Jenkins

Mass of Images, 1978

Video, black-and-white, sound, 4:19 min.

Purchase, with funds from the Film, Video, and New Media Committee

Learn Where the Meat Comes From (Floor 5)



2015.57

Drawings

Candy Jernigan

THE NEW YORK COLLECTIONS, Found Dope: Part II, (1986)

Found crack vials, colored pencil, graphite pencil, and ink stamp on paper

Sheet: 28 × 39in. (71.1 × 99.1 cm)

Purchase, with funds from the Drawing Committee and partial gift of The Philip Glass Family and the Greene Naftali Gallery

Whitney Museum of American Art
America Is Hard to See
May 1–September 27, 2015

Learn Where the Meat Comes From (Floor 5)



2000.189

Video

Joan Jonas

Vertical Roll, 1972

Video, black-and-white, sound, 19:38 min.

Purchase, with funds from the Film and Video Committee

Learn Where the Meat Comes From (Floor 5)



2014.142

Video

Suzanne Lacy

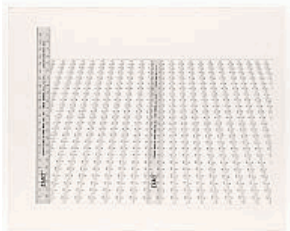
Learn Where the Meat Comes From, 1976

Video, color, sound, 14:20 min.

Aspect Ratio: 4 × 3in.

Purchase, with funds from the Film, Video, and New Media Committee

Learn Where the Meat Comes From (Floor 5)



2003.75

Drawings

Sylvia Plimack Mangold

With a Vanishing Point of 66", 1976

Pen and ink, graphite pencil, watercolor, and colored pencil on paper

Sheet: 30 1/8 × 39 15/16in. (76.5 × 101.4 cm)

Purchase, with funds from the Drawing Committee

Learn Where the Meat Comes From (Floor 5)



2015.1.1-16

Video

Cynthia Maughan

Selections from Cynthia Maughan's Tapes, 1973-1978

Video, black-and-white and color, sound, 27:02 min.

Purchase, with funds from the Film, Video, and New Media Committee

Learn Where the Meat Comes From (Floor 5)



2009.116

Video

Paul McCarthy

Black and White Tapes, 1970-1975

Video, black-and-white, sound, 32:50 min.

Purchase, with funds from Randy Slifka

Whitney Museum of American Art

America Is Hard to See

May 1–September 27, 2015

Learn Where the Meat Comes From (Floor 5)

2001.138.7

Photographs

Paul McCarthy

Experimental Dancer, (1975)

Nine gelatin silver prints mounted on board

Overall: 24 × 29 13/16in. (61 × 75.7 cm)

Sheet (each): 8 × 10in. (20.3 × 25.4 cm)

Image (each): 8 × 10in. (20.3 × 25.4 cm)

Mount (board): 27 1/2 × 33 1/2 × 1/8in. (69.9 × 85.1 × 0.3 cm)



Learn Where the Meat Comes From (Floor 5)

2015.47

Photographs

Ana Mendieta

Untitled, (1973)

Gelatin silver print

Sheet: 10 × 8in. (25.4 × 20.3 cm)

Frame: 15 1/2 × 12 1/4 × 1 1/4in. (39.4 × 31.1 × 3.2 cm)

Purchase, with funds from the Photography Committee



Learn Where the Meat Comes From (Floor 5)

92.113

Photographs

Ana Mendieta

Untitled (Silueta Series, Iowa), 1979

Chromogenic print

Image: 20 × 13 3/16in. (50.8 × 33.5 cm)

Frame: 25 1/4 × 18 × 2in. (64.1 × 45.7 × 5.1 cm)

Purchase, with funds from the Photography Committee



Learn Where the Meat Comes From (Floor 5)

2015.35

Video

Howardena Pindell

Free, White and 21, 1980

Video, color, sound, 12:15 min.

Purchase, with funds from the Film, Video, and New Media Committee



Learn Where the Meat Comes From (Floor 5)

98.28.3a-n

Photographs

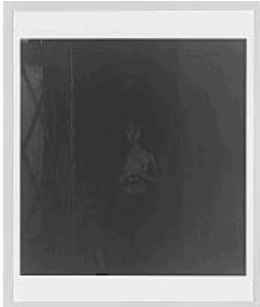
Adrian Piper

Food for the Spirit, 1971, (printed 1997)

Fourteen gelatin silver prints

See components

Purchase, with funds from the Photography Committee

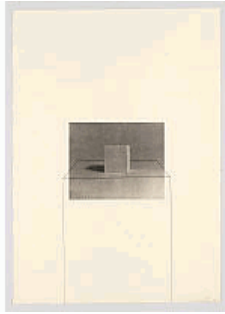


Whitney Museum of American Art

America Is Hard to See

May 1–September 27, 2015

Learn Where the Meat Comes From (Floor 5)



2011.89

Prints

Liliana Porter

Untitled (with Cube - tall), 1974

Photoetching and graphite pencil

Sheet (irregular): 31 3/4 × 24 3/8in. (80.6 × 61.9 cm)

Image (composition): 19 1/2 × 12 1/2in. (49.5 × 31.8 cm)

Image: 8 7/8 × 11 5/8in. (22.5 × 29.5 cm)

Purchase, with funds from the Print Committee

Learn Where the Meat Comes From (Floor 5)



76.7

Drawings

Dorothea Rockburne

Drawing Which Makes Itself, (c. 1973)

Graphite and folded paper collage on paper

Sheet: 30 × 40in. (76.2 × 101.6 cm)

Gift of Frances and Sydney Lewis

Learn Where the Meat Comes From (Floor 5)



2015.36

Video

Martha Rosler

Semiotics of the Kitchen, 1975

Video, black-and-white, sound, 6:09 min.

Purchase, with funds from the Film, Video, and New Media Committee

Learn Where the Meat Comes From (Floor 5)



2003.227

Photographs

Lucas Samaras

AutoPolaroid, 1971

Dye diffusion transfer print (Polaroid) with hand-applied ink

Sheet: 3 3/8 × 4 1/4in. (8.6 × 10.8 cm)

Image: 2 7/8 × 3 3/4in. (7.3 × 9.5 cm)

Purchase, with funds from the Postwar Committee

Learn Where the Meat Comes From (Floor 5)



2003.226

Photographs

Lucas Samaras

AutoPolaroid, 1971

Dye diffusion transfer print (Polaroid) with hand-applied ink

Sheet: 3 3/8 × 4 1/4in. (8.6 × 10.8 cm)

Image: 2 7/8 × 3 3/4in. (7.3 × 9.5 cm)

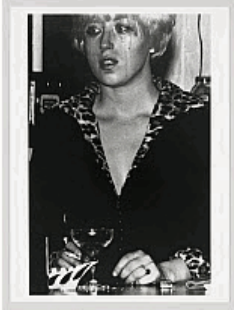
Purchase, with funds from the Postwar Committee

Whitney Museum of American Art

America Is Hard to See

May 1–September 27, 2015

Learn Where the Meat Comes From (Floor 5)



P.2011.358

Photographs
Cindy Sherman
Untitled Film Still #27, 1979
Gelatin silver print
Sheet: 10 × 8in. (25.4 × 20.3 cm)
Image: 9 1/2 × 6 11/16in. (24.1 × 17 cm)
Promised gift of Thea Westreich Wagner and Ethan Wagner

Learn Where the Meat Comes From (Floor 5)



P.2011.357

Photographs
Cindy Sherman
Untitled Film Still #45, 1979
Gelatin silver print
Sheet: 8 × 10in. (20.3 × 25.4 cm)
Image: 6 1/2 × 9 1/2in. (16.5 × 24.1 cm)
Promised gift of Thea Westreich Wagner and Ethan Wagner

Learn Where the Meat Comes From (Floor 5)



2010.221

Photographs
Cindy Sherman
Untitled Film Still #23, 1978
Gelatin silver print
Sheet: 8 × 9 15/16in. (20.3 × 25.2 cm)
Image: 7 1/2 × 9 7/16in. (19.1 × 24 cm)
Frame: 14 1/4 × 16 × 1 3/8in. (36.2 × 40.6 × 3.5 cm)
Gift of Thea Westreich Wagner and Ethan Wagner

Learn Where the Meat Comes From (Floor 5)



2010.220

Photographs
Cindy Sherman
Untitled Film Still #14, 1978
Gelatin silver print
Sheet: 9 15/16 × 8in. (25.2 × 20.3 cm)
Image: 9 7/16 × 7 1/2in. (24 × 19.1 cm)
Frame: 16 1/4 × 14 × 1 3/8in. (41.3 × 35.6 × 3.5 cm)
Gift of Thea Westreich Wagner and Ethan Wagner

Learn Where the Meat Comes From (Floor 5)



P.2011.383

Photographs
Laurie Simmons
New bathroom/Aerial View/Sunlight, 1979
Chromogenic print
Sheet: 5 × 8in. (12.7 × 20.3 cm)
Image: 3 1/2 × 5in. (8.9 × 12.7 cm)
Promised gift of Thea Westreich Wagner and Ethan Wagner

Whitney Museum of American Art
America Is Hard to See
May 1–September 27, 2015

Learn Where the Meat Comes From (Floor 5)



P.2011.371

Photographs
Laurie Simmons
Woman Listening to Radio, 1976
Gelatin silver print
Sheet: 8 × 9 7/8in. (20.3 × 25.1 cm)
Image: 5 5/16 × 7 7/8in. (13.5 × 20 cm)
Promised gift of Thea Westreich Wagner and Ethan Wagner

Learn Where the Meat Comes From (Floor 5)



P.2011.369

Photographs
Laurie Simmons
Mother/Nursery, 1976
Gelatin silver print
Sheet: 9 7/8 × 7 15/16in. (25.1 × 20.2 cm)
Image: 7 15/16 × 5 5/16in. (20.2 × 13.5 cm)
Promised gift of Thea Westreich Wagner and Ethan Wagner

Learn Where the Meat Comes From (Floor 5)



2013.102

Photographs
Sturtevant
Duchamp Man Ray Portrait, (1966)
Gelatin silver print
Sheet (sight): 8 5/8 × 7 1/4in. (21.9 × 18.4 cm)
Image (sight): 8 5/8 × 7 1/4in. (21.9 × 18.4 cm)
Gift of Sascha S. Bauer and Kristen Dickey

Learn Where the Meat Comes From (Floor 5)



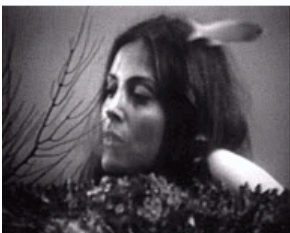
2015.50.1-27

Video
William Wegman
Selected Works: Reel 1, 1970-1971
Video, black-and-white, sound, 30:12 min.
Purchase, with Museum exhibition funds

Learn Where the Meat Comes From (Floor 5)

2014.131

Video
Hannah Wilke
Hello Boys, 1975
Video, black-and-white, sound, 12 min.
Purchase, with funds from the Film, Video, and New Media Committee



Whitney Museum of American Art
America Is Hard to See
May 1–September 27, 2015

Learn Where the Meat Comes From (Floor 5)



2005.33

Photographs
Hannah Wilke
S.O.S. Starification Object Series (Curlers), (1974)
Gelatin silver print
Sheet: 40 × 27in. (101.6 × 68.6 cm)
Image: 40 × 27in. (101.6 × 68.6 cm)
Mount (board): 40 × 27 × 1/16in. (101.6 × 68.6 × 0.2 cm)
Purchase, with funds from the Photography Committee and partial gift of Marsie,

Learn Where the Meat Comes From (Floor 5)



94.85

Photographs
Francesca Woodman
Then at one point I did not need to translate the notes; they went directly to my hands,
Providence, (1976)
Gelatin silver print
Sheet: 14 × 11in. (35.6 × 27.9 cm)
Image: 6 × 6in. (15.2 × 15.2 cm)
Frame: 21 3/8 × 17 3/8 × 1in. (54.3 × 44.1 × 2.5 cm)

Racing Thoughts (Floor 5)



84.23

Paintings
Jean-Michel Basquiat
Hollywood Africans, 1983
Acrylic and oil stick on canvas
Overall: 84 1/16 × 84in. (213.5 × 213.4 cm)
Gift of Douglas S. Cramer

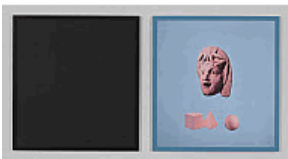
Racing Thoughts (Floor 5)



2009.22

Video
Dara Birnbaum
Technology/Transformation: Wonder Woman, 1978-79
Video, color, sound, 5:50 min.
Purchase, with funds from the Film, Video, and New Media Committee

Racing Thoughts (Floor 5)



2012.121a-b

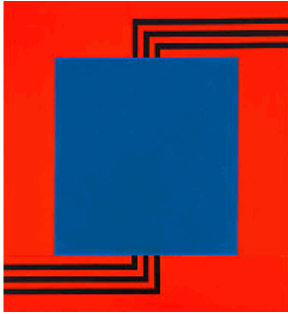
Photographs
Sarah Charlesworth
Fear of Nothing, (1987, partially refabricated 2012)
Two silver dye bleach prints mounted on board, with frames
Overall: 31 1/8 × 66 1/4 × 1in. (79.1 × 168.3 × 2.5 cm)
Overall (each, framed): 31 1/8 × 31 1/8 × 1in. (79.1 × 79.1 × 2.5 cm)
Gift of Arthur and Susan Fleischer

Whitney Museum of American Art

America Is Hard to See

May 1–September 27, 2015

Racing Thoughts (Floor 5)



2004.608a-b

Paintings

Peter Halley

Blue Cell with Triple Conduit, 1986

Acrylic and vinyl paint on canvas, two parts

Overall: 77 5/16 × 77 1/4 × 3 1/4in. (196.4 × 196.2 × 8.3 cm)

Gift of Heather and Steven Mnuchin

Racing Thoughts (Floor 5)



97.89.2

Paintings

Keith Haring

Untitled, (1981)

Vinyl paint on tarpaulin, with metal grommets

Overall (irregular): 73 3/16 × 72 1/16in. (185.9 × 183 cm)

Gift of the Lannan Foundation

Racing Thoughts (Floor 5)



84.6

Paintings

Jasper Johns

Racing Thoughts, 1983

Encaustic, screenprint, and wax crayon on collaged cotton and linen

Overall: 48 1/16 × 75 3/16in. (122.1 × 191 cm)

Purchase, with funds from the Burroughs Wellcome Purchase Fund; Leo Castelli; the Wilfred P. and Rose J. Cohen Purchase Fund; the Julia B. Engel Purchase Fund; the Equitable Life Assurance Society of the United States Purchase Fund; The Sondra and

Racing Thoughts (Floor 5)



89.30a-k

Sculpture

Jeff Koons

New Hoover Convertibles, Green, Blue; New Hoover Convertibles, Green, Blue;

Doubledecker, (1981-1987)

Four vacuum cleaners, acrylic, and fluorescent lights

Overall: 116 × 41 × 28in. (294.6 × 104.1 × 71.1 cm)

Purchase, with funds from The Sondra and Charles Gilman, Jr. Foundation, Inc., and the Painting and Sculpture Committee

Racing Thoughts (Floor 5)



2012.180

Prints

Barbara Kruger

Untitled (We Don't Need Another Hero), (1987)

Photoscreenprint on vinyl

Overall: 108 7/8 × 209 3/16 × 2 1/2in. (276.5 × 531.3 × 6.4 cm)

Gift from the Emily Fisher Landau Collection

Whitney Museum of American Art

America Is Hard to See

May 1–September 27, 2015

Racing Thoughts (Floor 5)



P.2015.2a-b

Photographs

Louise Lawler

Does Marilyn Monroe Make You Cry?, 1988

Cibachrome print with plexiglass wall label

Photograph: 27 5/8 x 39 1/4 in.

Label: 4 1/8 x 6 1/16 in.

Promised gift of Melva Bucksbaum and Raymond J. Learsy

Racing Thoughts (Floor 5)



2014.2

Photographs

William Leavitt

Spectral Analysis, (1977, printed 2011)

Three chromogenic prints mounted on Sintra

Overall: 16 x 60 1/8 in. (40.6 x 152.7 cm)

Mount: 16 1/16 x 60 1/8 x 1/8 in. (40.8 x 152.7 x 0.3 cm)

Purchase, with funds from the Photography Committee

Racing Thoughts (Floor 5)



88.48a-b

Sculpture

Sherrie Levine

Large Gold Knot: 1, 1987

Oil on plywood

Overall: 62 9/16 x 50 9/16 x 3 9/16 in. (158.9 x 128.4 x 9 cm)

Purchase, with funds from the Painting and Sculpture Committee

Racing Thoughts (Floor 5)

82.11

Sculpture

Nam June Paik

V-yramid, (1982)

Two-channel video installation, color, sound, with forty television sets

Overall: 186 3/4 x 85 x 74 in. (474.4 x 215.9 x 188 cm)

Purchase, with funds from the Lemberg Foundation, Inc. in honor of Samuel Lemberg

Racing Thoughts (Floor 5)



93.130

Paintings

Lari Pittman

Untitled #16 (A Decorated Chronology of Insistence and Resignation), 1993

Acrylic, enamel, vinyl paint, glitter, and crayon on wood

Overall: 84 x 60 1/16 in. (213.4 x 152.6 cm)

Gift of Peter Norton

Whitney Museum of American Art

America Is Hard to See

May 1–September 27, 2015

Racing Thoughts (Floor 5)



91.86.2

Photographs

Richard Prince

Spiritual America, (1983)

Chromogenic print

Sheet: 23 15/16 × 19 15/16in. (60.8 × 50.6 cm)

Image: 23 7/16 × 15 13/16in. (59.5 × 40.2 cm)

Frame: 30 7/8 × 78 3/8in. (78.4 × 199.1 cm)

Gift of an anonymous donor

Racing Thoughts (Floor 5)



92.131a-h

Sculpture

Charles Ray

Boy, 1992

Painted fiberglass, steel, and fabric

Overall: 71 1/2 × 39 1/4 × 20 1/2in. (181.6 × 99.7 × 52.1 cm)

Purchase, with funds from Jeffrey Deitch, Bernardo Nadal-Ginard, and Penny and Mike Winton

Racing Thoughts (Floor 5)

82.12a-b

Paintings

David Salle

Splinter Man, (1982)

Oil and acrylic on canvas, two parts

Overall (In-Situ): 98 1/16 × 195 13/16in. (249.1 × 497.4 cm)

Purchase, with funds from Mr. and Mrs. Charles M. Diker

Love Letter From The War Front (Floor 5)



94.16

Photographs

David Armstrong

French Chris, Rue André Antoine, 1980

Gelatin silver print

Sheet: 15 15/16 × 19 7/8in. (40.5 × 50.5 cm)

Image: 15 1/16 × 18 13/16in. (38.3 × 47.8 cm)

Purchase, with funds from Michèle Gerber Klein

Love Letter From The War Front (Floor 5)

91.40

Prints

Sue Coe

Aids and the Federal Government, 1990

Photoetching

Sheet: 13 1/16 × 18 13/16in. (33.2 × 47.8 cm)

Image: 10 1/2 × 13 5/8in. (26.7 × 34.6 cm)

Gift of Kirby Gookin



Whitney Museum of American Art
America Is Hard to See
May 1–September 27, 2015

Love Letter From The War Front (Floor 5)

P.2015.1
Drawings
Robert Gober
Untitled, 1989
Pastel and graphite on vellum
Overall: 14 × 11in. (35.6 × 27.9 cm)
Promised gift of Linda and Bob Gersh

Love Letter From The War Front (Floor 5)

92.6
Sculpture
Robert Gober
Untitled, 1991
Wax, cloth, wood, leather and human hair
Overall: 12 5/16 × 10 1/4 × 37 1/2in. (31.3 × 26 × 95.3 cm)
Purchase, with funds from Robert W. Wilson



Love Letter From The War Front (Floor 5)

92.127
Installations
Nan Goldin
The Ballad of Sexual Dependency, (1979-1996)
Slide installation with 690 35mm color slides, sound, 45 min. looped
Purchase, with funds from The Charles Engelhard Foundation, the Mrs. Percy Uris Bequest, the Painting and Sculpture Committee and the Photography Committee



Love Letter From The War Front (Floor 5)

P.2010.348
Photographs
Felix Gonzalez-Torres
"Untitled" (Love Letter From The War Front), (1988)
Chromogenic print jigsaw puzzle in plastic bag
Overall: 7 3/8 × 9 3/8 × 1/16in. (18.7 × 23.8 × 0.2 cm)
Promised gift of Emily Fisher Landau

Love Letter From The War Front (Floor 5)

P.2010.350
Photographs
Felix Gonzalez-Torres
"Untitled" (Paris, Last Time, 1989), 1989
Chromogenic print jigsaw puzzle in plastic bag
Overall: 7 3/8 × 9 3/8 × 1/16in. (18.7 × 23.8 × 0.2 cm)
Promised gift of Emily Fisher Landau

Whitney Museum of American Art

America Is Hard to See

May 1–September 27, 2015

Love Letter From The War Front (Floor 5)

2005.138

Prints

Felix Gonzalez-Torres

"Untitled", 1989

Screenprint

Sheet: 16 11/16 × 21 13/16in. (42.4 × 55.4 cm)

Mount: 17 5/8 × 22 5/8 × 1/16in. (44.8 × 57.5 × 0.2 cm)

Gift of Thea Westreich and Ethan Wagner



Love Letter From The War Front (Floor 5)

P.2010.321

Photographs

Peter Hujar

David Lighting Up, (1985)

Gelatin silver print

Sheet (sight): 14 13/16 × 14 7/8in. (37.6 × 37.8 cm)

Image (sight): 14 5/8 × 14 3/4in. (37.1 × 37.5 cm)

Promised gift of the Fisher Landau Center for Art



Love Letter From The War Front (Floor 5)

P.2010.320

Photographs

Peter Hujar

West Side Parking Lots, NYC, (1976)

Gelatin silver print

Sheet (Sight): 14 7/8 × 14 7/8in. (37.8 × 37.8 cm)

Promised gift of the Fisher Landau Center for Art



Love Letter From The War Front (Floor 5)

P.2010.202

Photographs

Robert Mapplethorpe

Self-Portrait, (1988)

Gelatin silver print

Sheet (sight): 22 7/8 × 19in. (58.1 × 48.3 cm)

Image (sight): 22 7/8 × 19in. (58.1 × 48.3 cm)

Promised gift of Emily Fisher Landau



Love Letter From The War Front (Floor 5)

2002.305

Photographs

Robert Mapplethorpe

American Flag, (1977)

Gelatin silver print

Sheet: 19 3/4 × 15 15/16in. (50.2 × 40.5 cm)

Image: 13 7/8 × 14in. (35.2 × 35.6 cm)

Gift of The Robert Mapplethorpe Foundation, Inc. in honor of Sondra Gilman Gonzalez-Falla



Whitney Museum of American Art

America Is Hard to See

May 1–September 27, 2015

Love Letter From The War Front (Floor 5)

2012.160

Prints

Donald Moffett

He Kills Me, 1987

Offset lithograph

Sheet: 23 1/2 × 37 1/2in. (59.7 × 95.3 cm)

Image: 23 1/2 × 37 1/2in. (59.7 × 95.3 cm)

Gift of David W. Kiehl in memory of artists and artworkers who died of AIDS



Love Letter From The War Front (Floor 5)

94.97

Photographs

Mark Morrisroe

Untitled, 1985

Chromogenic print

Sheet: 15 15/16 × 19 15/16in. (40.5 × 50.6 cm)

Image (Irregular): 13 × 19 3/16in. (33 × 48.7 cm)

Gift of Pat Hearn Gallery



Love Letter From The War Front (Floor 5)

94.83

Photographs

Mark Morrisroe

Untitled, 1981, printed 1984

Silver dye bleach print (Cibachrome)

Sheet: 19 15/16 × 16in. (50.6 × 40.6 cm)

Image: 15 1/2 × 15 1/2in. (39.4 × 39.4 cm)

Purchase, with funds from the Photography Committee



Love Letter From The War Front (Floor 5)

2006.348

Prints

Kiki Smith

Black Flag, (1989)

Etching and aquatint

Sheet (irregular): 20 3/4 × 32 5/8in. (52.7 × 82.9 cm)

Plate: 20 1/4 × 29 5/8in. (51.4 × 75.2 cm)

Purchase, with funds from David W. Kiehl in honor of Leonard A. Lauder



Love Letter From The War Front (Floor 5)

2007.122a-c

Photographs

David Wojnarowicz

Untitled, (1989)

Three gelatin silver prints

See components

Purchase, with funds from the Robert Mapplethorpe Foundation and the Photography Committee



Whitney Museum of American Art
America Is Hard to See
May 1–September 27, 2015

Love Letter From The War Front (Floor 5)



99.89

Paintings

Martin Wong

Big Heat, (1986)

Acrylic on linen

Overall: 60 1/8 × 48 1/8in. (152.7 × 122.2 cm)

Purchase, with funds from the Painting and Sculpture Committee

Guarded View (Floor 5)



2012.87

Paintings

Lutz Bacher

Playboys (Feminist Movement), 1993

Acrylic and screenprint on canvas

Overall: 44 1/4 × 36 1/8in. (112.4 × 91.8 cm)

Purchase, with funds from the Painting and Sculpture Committee

Guarded View (Floor 5)



2001.290a-b

Sculpture

Matthew Barney

Envelopa: DRAWING RESTRAINT 7 (manual), (1993)

Graphite and synthetic polymer on paper in a prosthetic plastic and self-lubricating plastic frame

Overall: 19 1/4 × 20 1/8 × 1 7/8in. (48.9 × 51.1 × 4.8 cm)

Gift of Emily Fisher Landau

Guarded View (Floor 5)



93.33

Installations

Matthew Barney

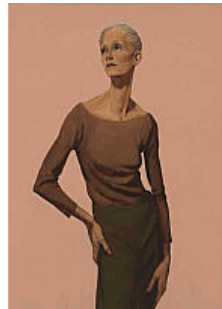
DRAWING RESTRAINT 7, (1993)

Three-channel video installation, color, silent, with three monitors, enameled steel, internally lubricated plastic, and six high-abuse fluorescent lighting fixtures

Dimensions variable

Purchase, with funds from the Painting and Sculpture Committee

Guarded View (Floor 5)



92.30

Paintings

John Currin

Skinny Woman, 1992

Oil on linen

Overall: 50 1/8 × 38 1/16in. (127.3 × 96.7 cm)

Purchase, with funds from The List Purchase Fund and the Painting and Sculpture Committee

Whitney Museum of American Art

America Is Hard to See

May 1–September 27, 2015

Guarded View (Floor 5)



95.118

Sculpture

Jimmie Durham

Self-portrait, 1986

Canvas, wood, paint, metal, synthetic hair, fur, feathers, shell and thread

Overall: 78 × 30 × 9in. (198.1 × 76.2 × 22.9 cm)

Purchase, with funds from the Contemporary Painting and Sculpture Committee

Guarded View (Floor 5)



92.128a-z

Sculpture

David Hammons

Untitled, (1992)

Human hair, wire, metallic mylar, sledge hammer, plastic beads, string, metal food tin, party hose, leather, tea bags, and feathers

Dimensions variable

Purchase, with funds from the Mrs. Percy Uris Bequest and the Painting and Sculpture Committee

Guarded View (Floor 5)



2002.353a-b

Photographs

Roni Horn

Clownmirror (2), (2001)

Two chromogenic prints

See components

Gift of the artist

Guarded View (Floor 5)



89.13a-d

Sculpture

Mike Kelley

More Love Hours Than Can Ever Be Repaid and The Wages of Sin, 1987

Stuffed fabric toys and afghans on canvas with dried corn; wax candles on wood and metal base

Overall: 120 3/4 × 151 3/4 × 31 3/4in. (306.7 × 385.4 × 80.6 cm)

Purchase, with funds from the Painting and Sculpture Committee

Guarded View (Floor 5)



2014.106

Installations

Karen Kilimnik

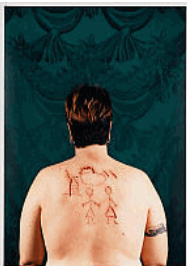
The Hellfire Club episode of the Avengers, (1989)

Fabric, photocopies, candelabra, toy swords, mirror, gilded frames, costume jewelry, boot, fake cobwebs, silver tankard, audio media player, and dried pea

Dimensions variable

Gift of Peter M. Brant, courtesy The Brant Foundation

Guarded View (Floor 5)



94.64

Photographs

Catherine Opie

Self-Portrait/Cutting, 1993

Chromogenic print

Image (sight): 39 × 28 3/8in. (99.1 × 72.1 cm)

Purchase, with funds from the Photography Committee

Whitney Museum of American Art
America Is Hard to See
May 1–September 27, 2015

Guarded View (Floor 5)



2011.125
Drawings
Raymond Pettibon
No Title (I began asking her...), 1988
Brush and ink and pen and ink on paper
Sheet: 13 7/8 × 10 3/4in. (35.2 × 27.3 cm)
Gift of Arthur and Susan Fleischer

Guarded View (Floor 5)



97.28.3
Drawings
Raymond Pettibon
No Title, 1996
Brush and ink on paper
Sheet (Irregular): 18 1/8 × 10in. (46 × 25.4 cm)
Purchase, with funds from the Drawing Committee

Guarded View (Floor 5)



97.28.2
Drawings
Raymond Pettibon
No Title, 1991
Pen, brush and brown and red ink on paper
Sheet (Irregular): 12 9/16 × 7 1/16in. (31.9 × 17.9 cm)
Purchase, with funds from the Drawing Committee

Guarded View (Floor 5)



97.19.1
Drawings
Raymond Pettibon
No Title, 1987
Brush and ink on paper
Sheet: 12 × 8 13/16in. (30.5 × 22.4 cm)
Purchase, with funds from the Drawing Committee

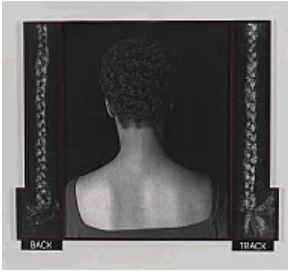
Guarded View (Floor 5)



2000.150
Sculpture
Paul Pfeiffer
Fragment of a Crucifixion (After Francis Bacon), (1999)
Video installation, color, silent, 0:30 min. looped, with projector and mounting arm
Overall: 20 × 5 × 20in. (50.8 × 12.7 × 50.8 cm)
Image: 3 × 4in. (7.6 × 10.2 cm)
Purchase, with funds from Melva Bucksbaum and the Film and Video Committee

Whitney Museum of American Art
America Is Hard to See
May 1–September 27, 2015

Guarded View (Floor 5)



91.59.4a-e

Photographs
Lorna Simpson
2 Tracks, (1990)
Three gelatin silver prints with frames and two plastic plaques
Overall: 48 7/8 × 62 9/16 × 1 11/16in. (124.1 × 158.9 × 4.3 cm)
Gift of Raymond J. Learsy and Gabriella De Ferrari

Guarded View (Floor 5)



96.72a-e

Prints
Kara Walker
A Means to An End... A Shadow Drama in Five Acts, 1995
Etching and aquatint
See components
Purchase, with funds from the Print Committee

Guarded View (Floor 5)



95.21

Paintings
Sue Williams
The Hose, 1994
Acrylic and oil on canvas
Overall: 84 × 72in. (213.4 × 182.9 cm)
Purchase, with funds from the Contemporary Painting and Sculpture Committee

Guarded View (Floor 5)



97.84a-d

Sculpture
Fred Wilson
Guarded View, (1991)
Wood, paint, steel and fabric
Dimensions variable
Gift of the Peter Norton Family Foundation

Guarded View (Floor 5)



91.2

Paintings
Christopher Wool
Untitled, 1990
Enamel on aluminum
Overall: 107 7/8 × 71 3/4in. (274 × 182.2 cm)
Purchase, with funds from the Painting and Sculpture Committee

Whitney Museum of American Art

America Is Hard to See

May 1–September 27, 2015

Distracting Distance (Floor 5)

2005.10

New Media

Cory Arcangel

Super Mario Clouds, 2002

Handmade hacked Super Mario Brothers cartridge and Nintendo NES video game system

Dimensions variable

Purchase, with funds from the Painting and Sculpture Committee



Distracting Distance (Floor 5)

P.2014.1a-c

Sculpture

Carol Bove

Adventures in Poetry, 2002

Three wood shelves with metal brackets, twenty-nine books, nine periodicals, and a plexiglass cube with paper

34 x 86 x 10 in. (86.4 x 218.4 x 25.4 cm)

Promised gift of David and Monica Zwirner



Distracting Distance (Floor 5)

2013.26

Paintings

Wade Guyton

Untitled, 2009

Epson UltraChrome inkjet on linen

Overall: 84 1/16 x 69 1/16 in. (213.5 x 175.4 cm)

Gift of the artist in honor of Scott Rothkopf



Distracting Distance (Floor 5)

P.2014.118a-o

Sculpture

Josh Kline

Cost of Living (Aleyda), (2014)

3D-printed sculptures in plaster, inkjet ink and cyanoacrylate, with janitor cart and LED lights

Overall: 44 1/2 x 36 x 19 1/2 in. (113 x 91.4 x 49.5 cm)

Promised gift of Laura Rapp and Jay Smith



Distracting Distance (Floor 5)

2010.54

Paintings

R. H. Quaytman

Distracting Distance, Chapter 16, 2010

Screenprint and gesso on wood

Overall: 24 5/8 x 39 7/8 in. (62.5 x 101.3 cm)

Purchase, with funds from the Painting and Sculpture Committee

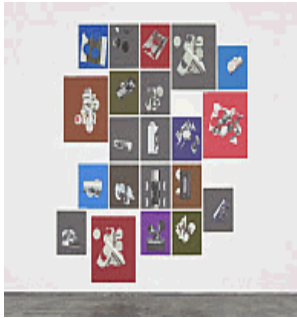


Whitney Museum of American Art

America Is Hard to See

May 1–September 27, 2015

Distracting Distance (Floor 5)

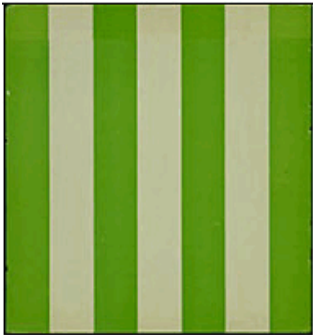


2014.152a-u

Paintings
Kelley Walker
Untitled, 2013

Pantone and four-color process silkscreen with acrylic ink on MDF, twenty-one parts
Overall: 94 × 104in. (238.8 × 264.2 cm)
Purchase, with funds from the Painting and Sculpture Committee **SiS**

Distracting Distance (Floor 5)



P.2011.482

Photographs
Christopher Williams

One of 406 Ceiling Panels (23 3/4 x 23 3/4 inches each) Covered on the back with striped paper (green and white) Each Stripe is 8.7 cm. >From "Frost and Defrost: A Work In Situ By Daniel Buren., Otis Art Institute Gallery, 2401 Wilshire Boulevard, 2006

Chromogenic print

Image (sight): 23 5/8 × 23 3/8in. (60 × 59.4 cm)

Sheet (sight): 23 5/8 × 23 3/8in. (60 × 59.4 cm)

Course of Empire (Floor 5)



2008.31

Drawings
Huma Bhabha
Untitled, 2008

Ink on chromogenic print

Sheet: 13 7/16 × 20in. (34.1 × 50.8 cm)

Purchase, with funds from the Drawing Committee

Course of Empire (Floor 5)



2008.42

Paintings
Mark Bradford
Bread and Circuses, 2007

Found paper, metal foil, acrylic, and string on canvas

Overall: 134 1/4 × 253 1/2in. (341 × 643.9 cm)

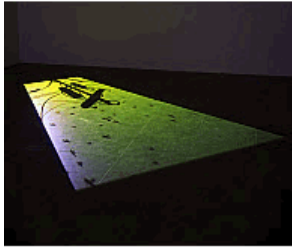
Purchase, with funds from Patrick and Mary Scanlan

Whitney Museum of American Art

America Is Hard to See

May 1–September 27, 2015

Course of Empire (Floor 5)



2007.4

Installations

Paul Chan

1st Light, (2005)

Video installation, black-and-white and color, silent, 14 min.

Overall: 103 × 245 × 283in. (261.6 × 622.3 × 718.8 cm)

Purchase, with funds from the Film and Video Committee

Course of Empire (Floor 5)



2014.40

Paintings

Carroll Dunham

Large Bather (quicksand), 2006-2012

Polyurethane and pigment and pencil on linen

Overall: 96 1/8 × 119 1/4in. (244.2 × 302.9 cm)

Purchase, with funds from the Director's Discretionary Fund, the Painting and Sculpture Committee, and an anonymous donor

Course of Empire (Floor 5)



2004.44

Drawings

Sam Durant

Legality is not Morality (index), 2004

Graphite pencil on paper

Sheet: 30 × 22 5/16in. (76.2 × 56.7 cm)

Purchase, with funds from the Painting and Sculpture Committee

Course of Empire (Floor 5)



2015.55

Paintings

Nicole Eisenman

Achilles Heel, 2014

Oil on canvas

Overall: 82 × 65in. (208.3 × 165.1 cm)

Gift of Andrew and Christine Hall

Course of Empire (Floor 5)



2012.138a-b

Photographs

LaToya Ruby Frazier

Landscape of the Body (Epilepsy Test), (2011)

Two gelatin silver prints mounted on board

Overall: 30 1/16 × 45 15/16 × 1/16in. (76.4 × 116.7 × 0.2 cm)

Purchase, with funds from the Henry Nias Foundation

Whitney Museum of American Art
America Is Hard to See
May 1–September 27, 2015

Course of Empire (Floor 5)



2007.104
Prints
Robert Gober
Monument Valley, 2007
Wood engraving
Sheet (irregular): 3 9/16 × 1 11/16in. (9 × 4.3 cm)
Purchase, with funds from the Print Committee

Course of Empire (Floor 5)



2010.190
Prints
Wayne Gonzales
So Long Suckers, 2008
Screenprint
Sheet: 20 × 24 3/4in. (50.8 × 62.9 cm)
Image: 18 × 22 11/16in. (45.7 × 57.6 cm)
Gift of Yvonne Puffer and Sean Elwood in honor of Erin and Caitlin Elwood

Course of Empire (Floor 5)



2008.15a-f
Sculpture
Rachel Harrison
Claude Levi-Strauss, (2007)
Wood, chicken wire, polystyrene, cement, acrylic, taxidermically preserved silver-laced Wyandotte hen and Black Minorca rooster with attached label and mount, USPS Priority Mail cardboard box, and Sharp UX-B20 Fax machine cardboard box
Dimensions variable
Purchase, with funds from Warren and Allison Kanders

Course of Empire (Floor 5)



2012.154.5
Prints
Rashid Johnson
Thurgood in the Hour of Chaos, 2009
Photolithograph
Sheet: 29 5/8 × 22in. (75.2 × 55.9 cm)
Image: 29 5/8 × 22in. (75.2 × 55.9 cm)
Purchase, with funds from the Director's Discretionary Fund

Course of Empire (Floor 5)



2003.269
Drawings
Ellsworth Kelly
Ground Zero, 2003
Collage on paper (newsprint)
Sheet (Irregular): 11 9/16 × 13 1/2in. (29.4 × 34.3 cm)
Gift of an anonymous donor

Whitney Museum of American Art

America Is Hard to See

May 1–September 27, 2015

Course of Empire (Floor 5)



2005.94.6

Photographs

Zoe Leonard

Smile, 2001

Dye transfer print

Sheet: 20 × 15 3/4in. (50.8 × 40 cm)

Image: 8 1/2 × 8 3/4in. (21.6 × 22.2 cm)

Purchase, with funds from the Photography Committee

Course of Empire (Floor 5)



2005.94.5

Photographs

Zoe Leonard

Two Chairs, 1999, printed 2000

Dye transfer print

Sheet: 20 × 15 3/4in. (50.8 × 40 cm)

Image: 8 5/8 × 8 3/4in. (21.9 × 22.2 cm)

Purchase, with funds from the Photography Committee

Course of Empire (Floor 5)



2005.94.4

Photographs

Zoe Leonard

Mandel Tobacco, 1999, printed 2001

Dye transfer print

Sheet: 20 × 15 3/4in. (50.8 × 40 cm)

Image: 8 5/8 × 8 3/4in. (21.9 × 22.2 cm)

Purchase, with funds from the Photography Committee

Course of Empire (Floor 5)



2005.94.3

Photographs

Zoe Leonard

Red & White Restaurant, 1999, printed 2001

Dye transfer print

Sheet: 20 × 15 3/4in. (50.8 × 40 cm)

Image: 8 1/2 × 8 1/2in. (21.6 × 21.6 cm)

Purchase, with funds from the Photography Committee

Course of Empire (Floor 5)



2005.94.2

Photographs

Zoe Leonard

Tailor Shop, 1999, printed 2000

Dye transfer print

Sheet: 20 × 15 3/4in. (50.8 × 40 cm)

Image: 8 5/8 × 8 3/4in. (21.9 × 22.2 cm)

Purchase, with funds from the Photography Committee

Whitney Museum of American Art

America Is Hard to See

May 1–September 27, 2015

Course of Empire (Floor 5)



2005.94.1

Photographs

Zoe Leonard

Clothing Palace, 1999, printed 2001

Dye transfer print

Sheet: 20 × 15 3/4in. (50.8 × 40 cm)

Image: 8 5/8 × 8 3/4in. (21.9 × 22.2 cm)

Purchase, with funds from the Photography Committee

Course of Empire (Floor 5)



2011.3a-i

Sculpture

Glenn Ligon

Rückenfigur, 2009

Neon and paint

Overall: 24 × 145 1/2 × 5in. (61 × 369.6 × 12.7 cm)

Purchase, with funds from the Painting and Sculpture Committee

Course of Empire (Floor 5)



2005.78

Photographs

An-My Lê

29 Palms: Guard, Combat Operations Center, (2003-2004)

Gelatin silver print mounted on board

Sheet: 26 1/2 × 38in. (67.3 × 96.5 cm)

Image: 26 1/2 × 38in. (67.3 × 96.5 cm)

Mount (board): 26 1/2 × 38 × 1/8in. (67.3 × 96.5 × 0.3 cm)

Purchase, with funds from the Henry Nias Foundation

Course of Empire (Floor 5)



2011.93

Paintings

Keith Mayerson

9-11, 2007

Oil on linen

Overall: 40 1/4 × 60 3/16in. (102.2 × 152.9 cm)

Gift of Lois Plehn

Course of Empire (Floor 5)



2006.94.2

Photographs

Adam McEwen

Untitled (Jeff), (2004)

Chromogenic print

Sheet: 52 3/4 × 37in. (134 × 94 cm)

Overall: 52 3/4 × 37 × 1/4in. (134 × 94 × 0.6 cm)

Frame: 53 1/16 × 37 5/16 × 1 3/16in. (134.8 × 94.8 × 3 cm)

Purchase, with funds from the Print Committee

Whitney Museum of American Art

America Is Hard to See

May 1–September 27, 2015

Course of Empire (Floor 5)



2010.170a-b

Drawings

Aleksandra Mir

Osama, (2007)

Fiber-tipped pen on paper, two parts

Sheet (each): 75 × 59in. (190.5 × 149.9 cm)

Purchase, with funds from the Drawing Committee

Course of Empire (Floor 5)



2004.400

Photographs

Abelardo Morell

\$1, 2002

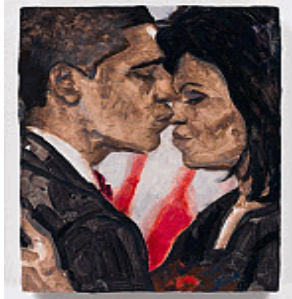
Gelatin silver print

Sheet: 20 × 23 15/16in. (50.8 × 60.8 cm)

Image: 18 × 22 3/8in. (45.7 × 56.8 cm)

Purchase, with funds from the Henry Nias Foundation

Course of Empire (Floor 5)



2014.291

Paintings

Elizabeth Peyton

Barack and Michelle, 2008-2013

Oil on canvas

Overall: 12 1/16 × 9 1/8in. (30.6 × 23.3 cm)

Gift of Beth Swofford

Course of Empire (Floor 5)



2005.135

Paintings

Edward Ruscha

The Old Tool & Die Building, 2004

Acrylic and colored pencil on canvas

Overall: 52 1/8 × 116 1/8in. (132.4 × 295 cm)

Gift of The American Contemporary Art Foundation, Inc., Leonard A. Lauder, President

Course of Empire (Floor 5)



2013.33

Drawings

Dana Schutz

Building the Boat While Sailing, (2012)

Ink on paper

Sheet (sight): 72 1/8 × 96in. (183.2 × 243.8 cm)

Purchase, with funds from the Drawing Committee

Whitney Museum of American Art
America Is Hard to See
May 1–September 27, 2015

Course of Empire (Floor 5)



2001.317
Prints
Dread Scott
Boom!, 2001
Screenprint
Sheet: 30 1/8 × 22 5/16in. (76.5 × 56.7 cm)
Image: 26 1/2 × 19 3/4in. (67.3 × 50.2 cm)
Gift of David W. Kiehl in honor of Joanne Leonhardt Cassullo

Course of Empire (Floor 5)



2012.203
Prints
Richard Serra
Abu Ghraib, 2004
Lithograph
Sheet: 20 × 14 9/16in. (50.8 × 37 cm)
Image: 16 × 10 9/16in. (40.6 × 26.8 cm)
Gift of Susan and John Hess in memory of Norma Hess

Course of Empire (Floor 5)



2008.41
Prints
Roger Shimomura
American Guardian, 2007
Lithograph
Sheet: 31 5/8 × 43 1/8in. (80.3 × 109.5 cm)
Image: 27 1/8 × 39in. (68.9 × 99.1 cm)
Purchase, with funds from the Print Committee

Course of Empire (Floor 5)



2008.179a-b
Photographs
Taryn Simon
Nuclear Waste Encapsulation and Storage Facility, Cherenkov Radiation, Hanford Site, U.S. Department of Energy, Southeastern Washington State, (2007)
Chromogenic print and plaque
See components
Purchase, with funds from the Henry Nias Foundation

Course of Empire (Floor 5)



2006.339.4
Prints
Rirkrit Tiravanija
White Columns 100, 2005
Letterpress on board
Sheet: 22 × 14in. (55.9 × 35.6 cm)
Image: 20 7/8 × 12 5/8in. (53 × 32.1 cm)
Purchase, with funds from Gregory R. Miller

Whitney Museum of American Art

America Is Hard to See

May 1–September 27, 2015

Course of Empire (Floor 5)

2011.1

Video
Jordan Wolfson
Untitled, 2007
Video, color, sound, 3 min. looped
Gift of the artist

East Ambulatory adjacent to Course of Empire (Floor 5)

2011.114a-b

Sculpture
Glenn Ligon
Warm Broad Glow II, 2011
Neon, paint, and powder-coated aluminum
Overall: 27 1/2 × 242 × 4 5/8 in. (69.9 × 614.7 × 11.7 cm)
Purchase, with funds from Marcia Dunn and Jonathan Sobel

BOB AND PAM GOERGEN GALLERY

Arcade Gallery (Floor 5)



78.1.4

Drawings
Sol LeWitt
4th wall: 24 lines from the center, 12 lines from the midpoint of each of the sides, 12 lines from each corner, 1976
Wax crayon, graphite pencil, and paint on wall
Dimensions variable
Purchase, with funds from the Gilman Foundation, Inc.

KAUFMAN GALLERY

Get Rid of Yourself Program A (Kaufman Gallery, Floor 5)



2013.82

Video
Charles Atlas
What I Did Last Summer, 1991
Video, color, sound, 12 min.
Purchase, with funds from Lori and Alexandre Chemla

Get Rid of Yourself Program A (Kaufman Gallery, Floor 5)



2010.198

Video
Alex Bag
Untitled (Spring '94), 1994
Video, color, sound, 28 min.
Gift of Eileen and Michael Cohen

Whitney Museum of American Art
America Is Hard to See
May 1–September 27, 2015

Get Rid of Yourself Program A (Kaufman Gallery, Floor 5)



2015.54

Film

Ericka Beckman

You the better, 1983

16mm film, color, sound, 30 min.

Purchase, with funds from the Film, Video, and New Media Committee

Get Rid of Yourself Program A (Kaufman Gallery, Floor 5)



2014.42

Film

Ayoka Chenzira

Hair Piece: A Film for Nappyheaded People, 1985

16mm film, color, sound, 10 min., transferred to video

Purchase, with funds from the Film, Video, and New Media Committee

Get Rid of Yourself Program A (Kaufman Gallery, Floor 5)

2014.260

Video

Loretta Fahrenholz

Ditch Plains, 2013

Video, color, sound, 30 min.

Aspect Ratio: 16:9

Purchase, with funds from the Film, Video, and New Media Committee

Get Rid of Yourself Program A (Kaufman Gallery, Floor 5)



2006.90

Video

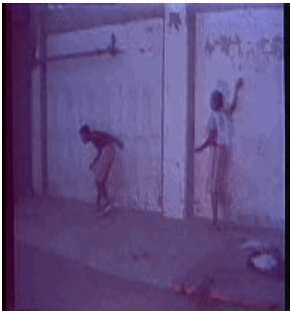
Luis Gispert

Stereomongrel, 2005

Super 35mm, color, sound, 12 min., transferred to video

Gift of the artists

Get Rid of Yourself Program A (Kaufman Gallery, Floor 5)



2014.105

Video

Ulysses Jenkins

Without Your Interpretation, 1983

Video, color, sound, 14 min.

Purchase, with funds from the Film, Video, and New Media Committee

Whitney Museum of American Art

America Is Hard to See

May 1–September 27, 2015

Get Rid of Yourself Program A (Kaufman Gallery, Floor 5)

2014.3

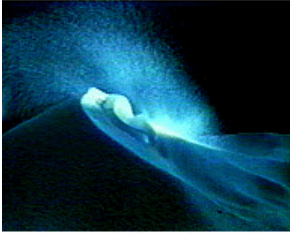
Video

Philip Mallory Jones

Jembe, (1989)

Video, color, sound, 3 min.

Purchase, with funds from the Film, Video, and New Media Committee



Get Rid of Yourself Program A (Kaufman Gallery, Floor 5)

2009.134

Video

Kalup Linzy

Conversations Wit de Churen V: As da Art World Might Turn, 2006

Video, color, sound, 12:09 min.

Purchase, with funds from the Film, Video, and New Media Committee



Get Rid of Yourself Program A (Kaufman Gallery, Floor 5)

2010.149

Video

Tony Oursler

Tunic (Song for Karen), 1990

Video, color, sound, 6:17 min.

Purchase, with funds from Catherine Orentreich



Get Rid of Yourself Program A (Kaufman Gallery, Floor 5)

2014.35

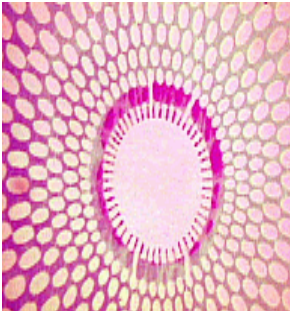
Video

Akosua Adoma Owusu

Intermittent Delight, 2007

Video, color, sound, 5 min.

Purchase, with funds from the Film, Video, and New Media Committee



Get Rid of Yourself Program A (Kaufman Gallery, Floor 5)

2015.58

Video

Jacolby Satterwhite

Reifying Desire 6, 2013

Video, color, sound, 24:04 min. looped

Purchase, with funds from the Film, Video, and New Media Committee



Whitney Museum of American Art

America Is Hard to See

May 1–September 27, 2015

Get Rid of Yourself Program A (Kaufman Gallery, Floor 5)

2006.110

Video

Ryan Trecartin

A Family Finds Entertainment,

2004 Video, color, sound, 41:12

min.

Gift of an anonymous donor



Get Rid of Yourself Program B (Kaufman Gallery, Floor 5)

2015.48

Video

Bernadette Corporation

Get Rid of Yourself, 2003

Video, color, sound, 61 min.

Purchase, with Museum exhibition funds



Get Rid of Yourself Program B (Kaufman Gallery, Floor 5)

2012.18

Film

Kevin Jerome Everson

Something Else, 2007

16mm film, color, sound, 2 min., transferred to video

Purchase, with funds from the Film, Video, and New Media Committee



Get Rid of Yourself Program B (Kaufman Gallery, Floor 5)

2015.28

Video

GCC

CO-OP, 2014

Video, color, sound, 3:43 min.

Purchase, with funds from the Film, Video, and New Media Committee



Get Rid of Yourself Program B (Kaufman Gallery, Floor 5)

2012.135

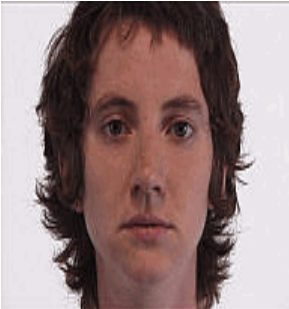
Video

Sharon Hayes

Symbionese Liberation Army (SLA) Screeds #13, 16, 20 & 29, 2003

Four-channel video installation, color, sound, 9 min., 10 min., 20 min. and 15 min.

Purchase, with funds from the Film, Video, and New Media Committee



Whitney Museum of American Art
America Is Hard to See
May 1–September 27, 2015

Get Rid of Yourself Program B (Kaufman Gallery, Floor 5)



2015.59

Video

Tala Madani

Eye Stabber, 2013

Video, color, silent, 1:35 min.

Purchase, with funds from the Film, Video, and New Media Committee

Get Rid of Yourself Program B (Kaufman Gallery, Floor 5)



2014.66

Film

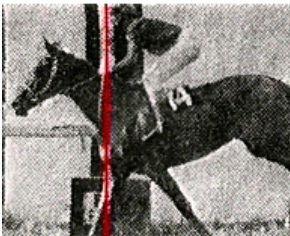
Josephine Meckseper

Untitled (Life after Bush Conference and One Year Anniversary of the Invasion of Iraq Protest, New York, 3/20/04), 2005

Super-8 film, black-and-white and color, silent, 7:25 min., transferred to video

Gift of the artist

Get Rid of Yourself Program B (Kaufman Gallery, Floor 5)



2014.137

Video

Walid Raad

The Dead Weight of a Quarrel Hangs, 1999

Video, color, sound, 16:54 min.

Aspect Ratio: 4 × 3in.

Purchase with funds from the Film, Video, and New Media Committee

Get Rid of Yourself Program B (Kaufman Gallery, Floor 5)



2011.98

Video

Richard Serra

Television Delivers People, (1973)

Video, color, sound, 6 min.

Purchase, with funds from the Film, Video, and New Media Committee

Get Rid of Yourself Program B (Kaufman Gallery, Floor 5)

2010.215

Film

Jack Smith

Song For Rent, 1969

16mm film, color, silent, 4 min., with audio CD

Gift of Gladstone Gallery, New York

Whitney Museum of American Art

America Is Hard to See

May 1–September 27, 2015

Get Rid of Yourself Program B (Kaufman Gallery, Floor 5)

2012.30

Installations

Wu Tsang

DAMELO TODO (Give Me Everything), (2010-2011)

Video installation, color, sound, 20 min., with bar, twelve bar stools, metallic printed fabric, monitor, and Blu-ray disc player

Dimensions variable

Purchase, with funds from The Buddy Taub Foundation, Dennis A. Roach and Jill Roach
Directors

ALLISON AND WARREN KANDERS STAIRWAY

Grand stairway

96.74.1a-I

Installations

Felix Gonzalez-Torres

"Untitled" (America), (1994)

Twelve light strings, each with forty-two 15-watt lightbulbs and rubber sockets

Dimensions variable

Purchase, with funds from the Contemporary Painting and Sculpture Committee

Elevators

T.2013.162.4

Installations

Richard Artschwager

Six in Four-E4, 2012-2015

Stainless steel and powder-coated metal

Dimensions variable

Commissioned by the Whitney Museum of American Art

PAMELLA ROLAND DEVOS ELEVATOR

Elevators

T.2013.162.3

Installations

Richard Artschwager

Six in Four-E3, 2012-2015

Melamine laminate, powder-coated metal, and rubber flooring

Dimensions variable

Commissioned by the Whitney Museum of American Art

Elevators

T.2013.162.2

Installations

Richard Artschwager

Six in Four-E2, 2012-2015

Powder-coated metal, mirrors, and rubber flooring

Dimensions variable

Commissioned by the Whitney Museum of American Art

Whitney Museum of American Art

America Is Hard to See

May 1–September 27, 2015

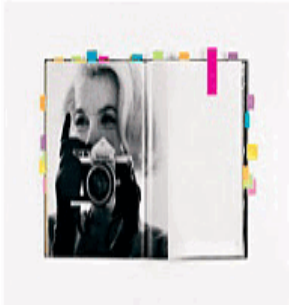
Elevators

T.2013.162.1

Installations
Richard Artschwager
Six in Four-E1, 2012-2015
Melamine laminate, powder-coated metal, and rubber flooring
Dimensions variable
Commissioned by the Whitney Museum of American Art

SUSAN AND JOHN HESS FAMILY GALLERY

Theater Gallery (Floor 3)



P.2011.73

Photographs
Anne Collier
Woman With A Camera (Last Sitting, Bert Stern), 2009
Chromogenic print
Sheet: 49 3/4 × 71 5/8in. (126.4 × 181.9 cm)
Image: 45 7/8 × 67 5/8in. (116.5 × 171.8 cm)
Mount: 49 3/4 × 71 5/8 × 1/4in. (126.4 × 181.9 × 0.6 cm)
Promised gift of Thea Westreich Wagner and Ethan Wagner

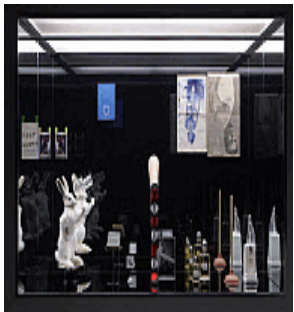
Theater Gallery (Floor 3)



2014.154a-r

Sculpture
Josephine Meckseper
Tout va bien, (2005)
Mixed media in display window
Overall: 38 × 98 1/2 × 23 5/8in. (96.5 × 250.2 × 60 cm)
Gift of Carol McCranie and Javier Magri

Theater Gallery (Floor 3)



2014.65a-p

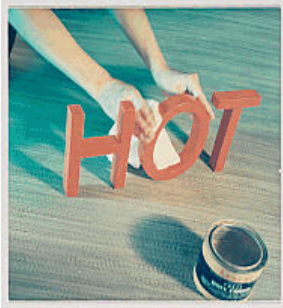
Sculpture
Josephine Meckseper
The Complete History of Postcontemporary Art, (2005)
Felt pen on paper, digital print, green artist tape, taxidermy rabbit with paper and wood sign, electronic revolving display stand, acrylic sheeting plate, embossed Koran book on chrome stand, acrylic sheeting sign on metal stand, mannequin leg with thigh high sock, digital print and advertising in acrylic sheeting frame, glass bottles with liquid and inkjet labels and chrome painted lids, toilet plunger, toilet brush, newsprint, gouache on

Whitney Museum of American Art

America Is Hard to See

May 1–September 27, 2015

Theater Gallery (Floor 3)



70.50.11

Photographs
Bruce Nauman
Waxing Hot, (1966-1967, printed 1970)
Chromogenic print
Sheet (Sight): 20 1/16 × 20 1/4in. (51 × 51.4 cm)
Image (Sight): 19 3/8 × 19 5/8in. (49.2 × 49.8 cm)
Purchase

Theater Gallery (Floor 3)



70.50.10

Photographs
Bruce Nauman
Untitled, (1966-1967, printed 1970)
Chromogenic print
Sheet (Sight): 20 1/16 × 23 7/8in. (51 × 60.6 cm)
Image (Sight): 19 1/2 × 23 3/8in. (49.5 × 59.4 cm)
Purchase

Theater Gallery (Floor 3)



70.50.9

Photographs
Bruce Nauman
Self Portrait as a Fountain, (1966-1967, printed 1970)
Chromogenic print
Sheet (sight): 20 1/16 × 23 15/16in. (51 × 60.8 cm)
Image (sight): 19 1/2 × 23 1/4in. (49.5 × 59.1 cm)
Purchase

Theater Gallery (Floor 3)



70.50.8

Photographs
Bruce Nauman
Feet of Clay, (1966-1967, printed 1970)
Chromogenic print
Sheet (Sight): 19 11/16 × 23 5/16in. (50 × 59.2 cm)
Image (Sight): 19 × 22 3/4in. (48.3 × 57.8 cm)
Purchase

Theater Gallery (Floor 3)



70.50.7

Photographs
Bruce Nauman
Finger Touch With Mirrors, (1966-1967, printed 1970)
Chromogenic print
Sheet (sight): 19 7/8 × 23 5/8in. (50.5 × 60 cm)
Image (sight): 19 1/4 × 23 1/8in. (48.9 × 58.7 cm)
Purchase

Whitney Museum of American Art

America Is Hard to See

May 1–September 27, 2015

Theater Gallery (Floor 3)



70.50.6

Photographs

Bruce Nauman

Finger Touch Number 1, (1966-1967, printed 1970)

Chromogenic print

Sheet (sight): 19 7/8 × 23 11/16in. (50.5 × 60.2 cm)

Image (sight): 19 3/8 × 23 5/16in. (49.2 × 59.2 cm)

Purchase

Theater Gallery (Floor 3)



70.50.5

Photographs

Bruce Nauman

Eating My Words, (1966-1967, printed 1970)

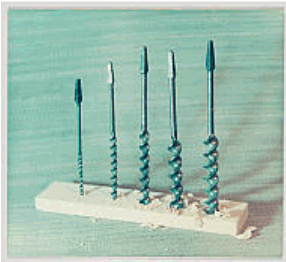
Chromogenic print

Sheet: 19 9/16 × 23 5/16in. (49.7 × 59.2 cm)

Image (Sight): 19 1/4 × 22 3/4in. (48.9 × 57.8 cm)

Purchase

Theater Gallery (Floor 3)



70.50.4

Photographs

Bruce Nauman

Drill Team, (1966-1967, printed 1970)

Chromogenic print

Sheet (sight): 20 1/8 × 23 1/4in. (51.1 × 59.1 cm)

Image (sight): 19 1/2 × 23 1/4in. (49.5 × 59.1 cm)

Purchase

Theater Gallery (Floor 3)



70.50.3

Photographs

Bruce Nauman

Cold Coffee Thrown Away, (1966-1967, printed 1970)

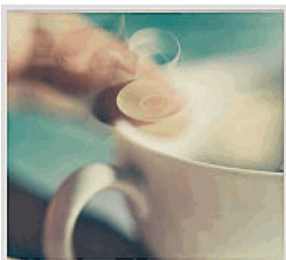
Chromogenic print

Sheet (sight): 20 1/8 × 23 13/16in. (51.1 × 60.5 cm)

Image (sight): 19 × 22 7/8in. (48.3 × 58.1 cm)

Purchase

Theater Gallery (Floor 3)



70.50.2

Photographs

Bruce Nauman

Coffee Spilled Because the Cup Was Too Hot, (1966-1967, printed 1970)

Chromogenic print

Sheet: 19 5/8 × 23 7/16in. (49.8 × 59.5 cm)

Image: 19 1/2 × 23 7/16in. (49.5 × 59.5 cm)

Purchase

Whitney Museum of American Art

America Is Hard to See

May 1–September 27, 2015

Theater Gallery (Floor 3)



70.50.1

Photographs

Bruce Nauman

Bound to Fail, (1966-1967, printed 1970)

Chromogenic print

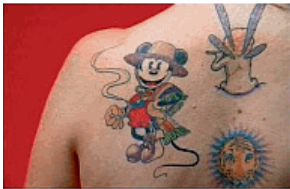
Sheet: 19 15/16 × 23 13/16in. (50.6 × 60.5 cm)

Image (Sight): 19 1/4 × 23 3/16in. (48.9 × 58.9 cm)

Purchase

SUSAN AND JOHN HESS FAMILY THEATER

Screening Program (Hess Theater, Floor 3)



2006.226

Film

Kenneth Anger

Mouse Heaven, 2005

Video, color, sound, 10 min.

Gift of the artist

Screening Program (Hess Theater, Floor 3)



2014.284

Film

Charles Atlas

Hail the New Puritan, 1986

16mm film, color, sound, 84:54 min., transferred to video

Purchase, with funds from the Film, Video, and New Media Committee and Catherine Orentreich in honor of Norman Orentreich

Screening Program (Hess Theater, Floor 3)



2012.12

Film

John Baldessari

Six Colorful Inside Jobs, 1977

16mm film, color, silent, 32:53 min., transferred to video

Purchase, with funds from Allison and Warren B. Kanders

Whitney Museum of American Art

America Is Hard to See

May 1–September 27, 2015

Screening Program (Hess Theater, Floor 3)



2003.90

Film

Robert Beavers

Sotiros, 1975-1996

35mm film, color, sound, 25 min.

Purchase, with funds from the Film and Video Committee and preserved with funds from the National Film Preservation Foundation

Screening Program (Hess Theater, Floor 3)



2015.54

Film

Ericka Beckman

You the better, 1983

16mm film, color, sound, 30 min.

Purchase, with funds from the Film, Video, and New Media Committee

Screening Program (Hess Theater, Floor 3)



2015.116

Film

David Bienstock

Nothing Happened This Morning, 1965

16mm film, black-and-white and color, sound, 21 min., transferred to video

Purchase, with funds from the Film, Video, and New Media Committee

Screening Program (Hess Theater, Floor 3)



2012.14

Video

Dara Birnbaum

PM Magazine/Acid Rock, 1982

Video, color, sound, 4:09 min.

Purchase, with funds from Beth Rudin DeWoody

Screening Program (Hess Theater, Floor 3)



2014.268

Video

Nayland Blake

Negative Bunny, 1994

Video, color, sound, 30 min. looped

Aspect Ratio: 4:3

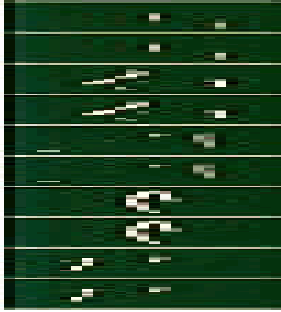
Gift of Lin Lougheed

Whitney Museum of American Art

America Is Hard to See

May 1–September 27, 2015

Screening Program (Hess Theater, Floor 3)



2005.119

Film

Stan Brakhage

Chinese Series, 2003

16mm film, color, silent, 2 min.

Overall: 369 × 430in. (937.3 × 1092.2 cm)

Purchase, with funds from the Orentreich Family Foundation

Screening Program (Hess Theater, Floor 3)



2005.118

Film

Stan Brakhage

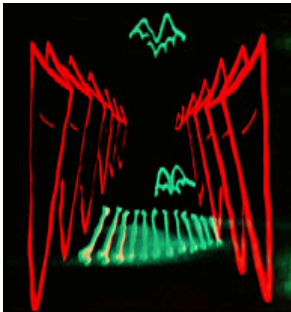
Persian Series 13-18, 2001

16mm film, color, silent, 9 min.

Overall: 215 × 120in. (546.1 × 304.8 cm)

Purchase, with funds from the Orentreich Family Foundation

Screening Program (Hess Theater, Floor 3)



2014.266

Film

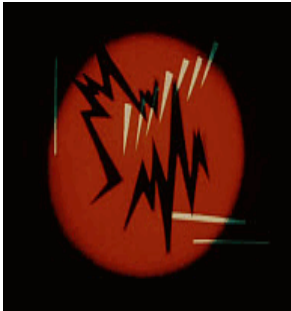
Mary Ellen Bute

Spook Sport, 1939

16mm film, color, sound, 8 min.

Purchase, with funds from the Film, Video, and New Media Committee

Screening Program (Hess Theater, Floor 3)



2014.102

Film

Mary Ellen Bute

Tarantella, 1940

16mm film, color, sound, 5 min.

Purchase, with funds from the Film, Video, and New Media Committee

Screening Program (Hess Theater, Floor 3)



2014.101

Film

Mary Ellen Bute

Synchromy No. 4: Escape, 1937-1938

16mm film, color, sound, 4 min.

Purchase, with funds from the Film, Video, and New Media Committee

Whitney Museum of American Art
America Is Hard to See
May 1–September 27, 2015

Screening Program (Hess Theater, Floor 3)



2014.17
Video
Peter Campus
third tape, 1976
2-inch open reel, 5:06 min., transferred to video
Dimensions variable
Gift of the artist

Screening Program (Hess Theater, Floor 3)



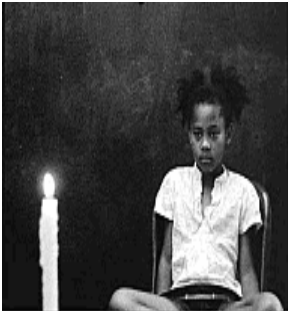
94.79
Film
Walter De Maria
Hardcore, 1969
Two-screen 16mm film installation, color, sound, 26:31 min.
Dimensions variable
Gift of Virginia Dwan

Screening Program (Hess Theater, Floor 3)



2015.45
Film
Maya Deren
At Land, 1944
16mm film, black-and-white, silent, 15 min.
Purchase, with funds from the Film, Video, and New Media Committee

Screening Program (Hess Theater, Floor 3)



2012.17
Video
Kevin Jerome Everson
Act One: Betty and the Candle, 2010
16mm film, black-and-white, silent, 11:25 min., transferred to video
Purchase, with funds from the Film, Video, and New Media Committee

Screening Program (Hess Theater, Floor 3)



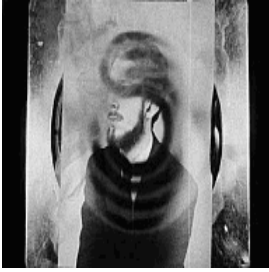
2010.8
Film
Morgan Fisher
(), 2003
16mm film, color, silent, 21 min.
Purchase, with funds from the Film, Video, and New Media Committee

Whitney Museum of American Art

America Is Hard to See

May 1–September 27, 2015

Screening Program (Hess Theater, Floor 3)



2013.96

Film

Hollis Frampton

nostalgia (HAPAX LEGOMENA I), 1973

16mm film, black-and-white, sound, 36 min.

Purchase, with funds from the Film, Video, and New Media Committee and the Director's Discretionary Fund

Screening Program (Hess Theater, Floor 3)



2014.132

Film

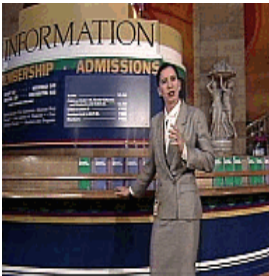
Robert Frank

Pull My Daisy, 1959

16mm film, black-and-white, sound, 28 min.

Purchase, with funds from the Film, Video, and New Media Committee

Screening Program (Hess Theater, Floor 3)



2015.53

Video

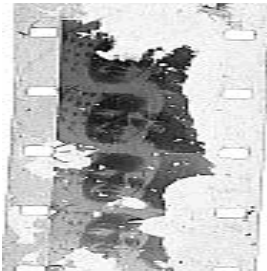
Andrea Fraser

Museum Highlights: A Gallery Talk, 1989

Video, color, sound, 29:28 min.

Purchase, with funds from the Wilfred P. and Rose J. Cohen Purchase Fund

Screening Program (Hess Theater, Floor 3)



2002.160

Film

Brian Frye

Oona's Veil, 2000

16mm film, black-and-white, sound, 11 min.

Purchase, with funds from the Film and Video Committee

Screening Program (Hess Theater, Floor 3)



2012.20

Film

Anna Gaskell

SOSW Ballet, 2011

35mm film, color, sound, 27:04 min.

Purchase, with funds from the Film, Video, and New Media Committee

Whitney Museum of American Art
America Is Hard to See
May 1–September 27, 2015

Screening Program (Hess Theater, Floor 3)



2004.642
Film
Sandra Gibson
NYC Flower Film, 2003
Super-8 film, color, silent, 5 min.
Purchase, with funds from George Kaufman

Screening Program (Hess Theater, Floor 3)



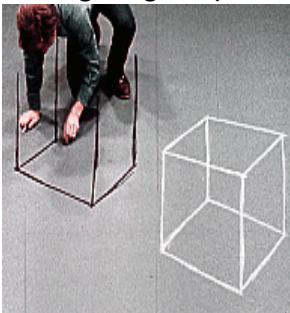
2000.170
Video
Dan Graham
Rock My Religion, 1982-1984
Video, black-and-white and color, sound, 55:27 min.
Purchase, with funds from the Film and Video Committee

Screening Program (Hess Theater, Floor 3)



2013.80
Video
David Hartt
Stray Light, 2011
Video, color, sound, 12:12 min.
Purchase, with funds from the Film, Video, and New Media Committee

Screening Program (Hess Theater, Floor 3)



2013.47
Film
David Haxton
Cube and Room Drawings, 1976-1977
16mm film, color, silent, 15 min.
Gift of the artist

Screening Program (Hess Theater, Floor 3)



2010.142
Film
Nancy Holt
Sun Tunnels, 1978
16mm film, color, sound, 28:31 min., transferred to video
Purchase, with funds from Cristina Enriquez-Bocobo in honor of Cody Smith

Whitney Museum of American Art

America Is Hard to See

May 1–September 27, 2015

Screening Program (Hess Theater, Floor 3)

2011.6

Video

Alex Hubbard

Dos Nacionales, 2008

Video, color, sound, 3:38 min.

Purchase, with funds from Melva Bucksbaum in honor of Mary and Patrick Scanlan and April and Glenn Bucksbaum

Screening Program (Hess Theater, Floor 3)

2015.117

Video

Michael Joo

Salt Transfer Cycle, 1994 Video,

color, sound, 8 min.

Gift of Eileen and Michael Cohen

Screening Program (Hess Theater, Floor 3)

2009.128

Video

Mike Kelley

Day Is Done, 2005-2006

Video, color, sound, 169 min.

Purchase, with funds from Randy Slifka



Screening Program (Hess Theater, Floor 3)



2014.142

Video

Suzanne Lacy

Learn Where the Meat Comes From, 1976

Video, color, sound, 14:20 min.

Aspect Ratio: 4 × 3in.

Purchase, with funds from the Film, Video, and New Media Committee

Screening Program (Hess Theater, Floor 3)



2001.238

Film

David Lamelas

The Desert People, 1974 16mm

film, color, sound, 52 min.

Gift of the artist

Whitney Museum of American Art

America Is Hard to See

May 1–September 27, 2015

Screening Program (Hess Theater, Floor 3)



2013.14

Video

Liz Magic Laser

I Feel Your Pain, 2011

Video, color, sound, 180 min., with poster

Purchase, with funds from Joanne Leonhardt Cassullo and The Dorothea L. Leonhardt Foundation, Inc. in honor of Ron Clark, Director, Independent Study Program

Screening Program (Hess Theater, Floor 3)



2014.30

Film

Helen Levitt

In the Street, 1952

16mm film, black-and-white, sound, 15 min., transferred to video

Purchase, with funds from the Film, Video, and New Media Committee

Screening Program (Hess Theater, Floor 3)



2014.20

Video

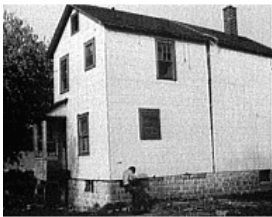
Christian Marclay

Telephones, 1995

Video, color, sound, 7:30 min.

Gift of Anne and Arthur Goldstein

Screening Program (Hess Theater, Floor 3)



2000.161

Film

Gordon Matta-Clark

Splitting, 1974

Super 8mm film, black-and-white and color, silent, 10:50 min., transferred to video

Purchase, with funds from the Film and Video Committee

Screening Program (Hess Theater, Floor 3)



2015.1.1-16

Video

Cynthia Maughan

Selections from Cynthia Maughan's Tapes, 1973-1978

Video, black-and-white and color, sound, 27:02 min.

Purchase, with funds from the Film, Video, and New Media Committee

Whitney Museum of American Art
America Is Hard to See
May 1–September 27, 2015

Screening Program (Hess Theater, Floor 3)



2014.248
Film
Jonas Mekas
Lost Lost Lost, 1976
16mm film, color and black-and-white, sound, 178 min.
Aspect Ratio: 4:3
Purchase, with funds from the Film, Video, and New Media Committee

Screening Program (Hess Theater, Floor 3)



2004.46
Film
Julie Murray
Untitled (light), 2002
16mm film, color, sound, 5 min.
Overall (Room used in 2004 Biennial): 210 × 120in. (533.4 × 304.8 cm)
Purchase, with funds from the Film and Video Committee

Screening Program (Hess Theater, Floor 3)

2015.42
Film
Raphael Montañez Ortiz
Cowboy and "Indian" Film, 1957-1958
16mm film, black-and-white, sound, 2:19 min., transferred to video
Gift of the artist

Screening Program (Hess Theater, Floor 3)



2015.35
Video
Howardena Pindell
Free, White and 21, 1980
Video, color, sound, 12:15 min.
Purchase, with funds from the Film, Video, and New Media Committee

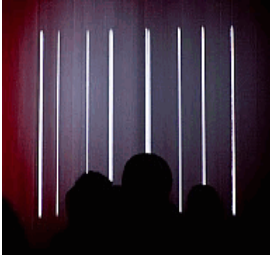
Screening Program (Hess Theater, Floor 3)



2011.91
Film
Yvonne Rainer
Five Easy Pieces, 1966-1969
8mm and 16mm film, black-and-white, silent, 48 min., transferred to video
Purchase, with funds from Joanne Leonhardt Cassullo in honor of Ron Clark and
The Independent Study Program

Whitney Museum of American Art
America Is Hard to See
May 1–September 27, 2015

Screening Program (Hess Theater, Floor 3)



2005.23

Installations

Luis Recoder

Linea, 2002

16mm film double projection, black-and-white, silent, 18 min.

Purchase, with funds from the Film and Video Committee

Screening Program (Hess Theater, Floor 3)



T.2014.151

Film

Hans Richter

Dreams That Money Can Buy, 1947

16mm film, color, sound, 85 min., transferred to video

Purchase, with funds from the Film, Video, and New Media Committee

Screening Program (Hess Theater, Floor 3)



2004.10

Film

Lucas Samaras

Self, 1969

16mm film, color, 23 min.

Gift of the artist

Screening Program (Hess Theater, Floor 3)



2013.81

Video

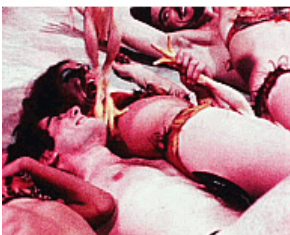
Matt Saunders

Century Rolls, 2012

Video, color, 10:45 min.

Purchase, with funds from the Film, Video, and New Media Committee

Screening Program (Hess Theater, Floor 3)



2009.126

Film

Carolee Schneemann

Meat Joy, 1964

16mm film, color, sound, 10:35 min., transferred to video

Purchase, with funds from Randy Slifka

Whitney Museum of American Art

America Is Hard to See

May 1–September 27, 2015

Screening Program (Hess Theater, Floor 3)



2011.100

Film

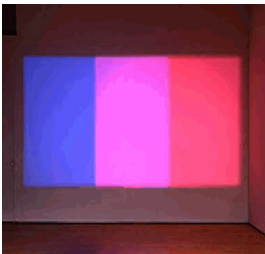
Richard Serra

Color Aid, (1970-1971)

16mm film, color, sound, 36 min.

Purchase, with funds from the Film, Video, and New Media Committee

Screening Program (Hess Theater, Floor 3)



2000.263

Installations

Paul Sharits

Shutter Interface, (1972)

Two-screen 16mm film installation, color, sound, 32 min.

Purchase, with funds from the Film and Video Committee

Screening Program (Hess Theater, Floor 3)



2013.84

Video

Amy Sillman

Draft of a Voice-Over for Split-Screen Video Loop, 2012

Video, color, sound, 6:06 min.

Purchase, with funds from Anne and Joel Ehrenkranz in honor of Chrissie Iles

Screening Program (Hess Theater, Floor 3)



2010.209

Film

Jack Smith

Flaming Creatures, 1962-1963

16mm film, black-and-white, sound, 43 min.

Gift of Gladstone Gallery, New York

Screening Program (Hess Theater, Floor 3)



99.62.11

Film

Andy Warhol

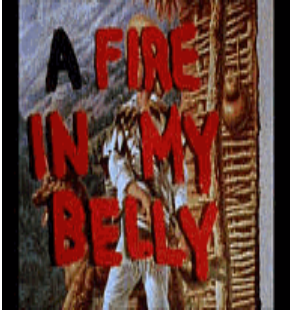
Henry Geldzahler, 1964

16mm film, black-and-white, silent, 99 min., transferred to video

Purchase, with funds from Joanne Leonhardt Cassullo and the Dorothea L. Leonhardt Fund at the Communities Foundation of Texas and The Horace W. Goldsmith Fund

Whitney Museum of American Art
America Is Hard to See
May 1–September 27, 2015

Screening Program (Hess Theater, Floor 3)



2012.4

Film

David Wojnarowicz

A Fire In My Belly (Film In Progress) and A Fire In My Belly (Excerpt), 1986-1987

Super 8mm film, black-and-white and color, silent, 13:06 min. and 7 min., transferred to video

Purchase, with funds from the Director's Discretionary Fund

Floor 1

2013.97

Installations

Maurizio Cattelan

Untitled, 2004, (2004)

Concrete and fiberglass

Overall: 15 1/2 × 19 × 14 3/4in., 385lb. (39.4 × 48.3 × 37.5 cm)

Gift of the artist

Floor 1



E.2015.0131

Installations

Lawrence Weiner

NYC Manhole Cover, 2000

Steel

Diameter: 31 15/16in. (81.1 cm)

(On long-term loan from the artist)

KENNETH C. GRIFFIN HALL

Floor 1



84.8

Sculpture

Jenny Holzer

UNEX Sign #1 (Selections from The Survival Series), (1983, refabricated 2012)

LED sign in powder-coated aluminum housing

Overall: 31 1/8 × 106 × 12in. (79.1 × 269.2 × 30.5 cm)

Purchase, with funds from the Louis and Bessie Adler Foundation, Inc., Seymour M. Klein, President

Whitney Museum of American Art
America Is Hard to See
May 1–September 27, 2015

JOANNE LEONHARDT CASSULLO MEZZANINE

Mezzanine



2015.11

Photographs
Michele Abeles
Watches #15, 2014
Pigment print
43 x 29 inches (109.22 x 73.66 cm)
Purchase, with funds from the Henry Nias Foundation

Mezzanine



P.2011.71

Photographs
Anne Collier
Eye (Enlargement of Color Negative), 2007
Chromogenic print
Sheet: 49 15/16 x 55 7/8in. (126.8 x 141.9 cm)
Image: 46 7/8 x 52 5/8in. (119.1 x 133.7 cm)
Mount: 49 15/16 x 55 7/8 x 1/4in. (126.8 x 141.9 x 0.6 cm)
Promised gift of Thea Westreich Wagner and Ethan Wagner

Studio cafe (Floor 8)

P.2011.474

Installations
Lawrence Weiner
Stone after Stone to form a Bridge #499, 1983
Vinyl
Overall: 8 x 174in. (20.3 x 442 cm)
Promised gift of Thea Westreich Wagner and Ethan Wagner

ANDREA AND JAMES GORDON

Untitled Restaurant (Floor 1)



2015.33

Sculpture
Robert Indiana
The Electric EAT, 1964/2007
Polychrome aluminum, stainless steel, and light bulbs
Overall: 77 7/8 x 9 1/8in. (197.8 x 23.2 cm)
Gift of Gillian and Simon Salama-Caro in honor of Sondra Gilman Gonzalez-Falla